

# Report

## for the quarter and six months ended 30 June 2005

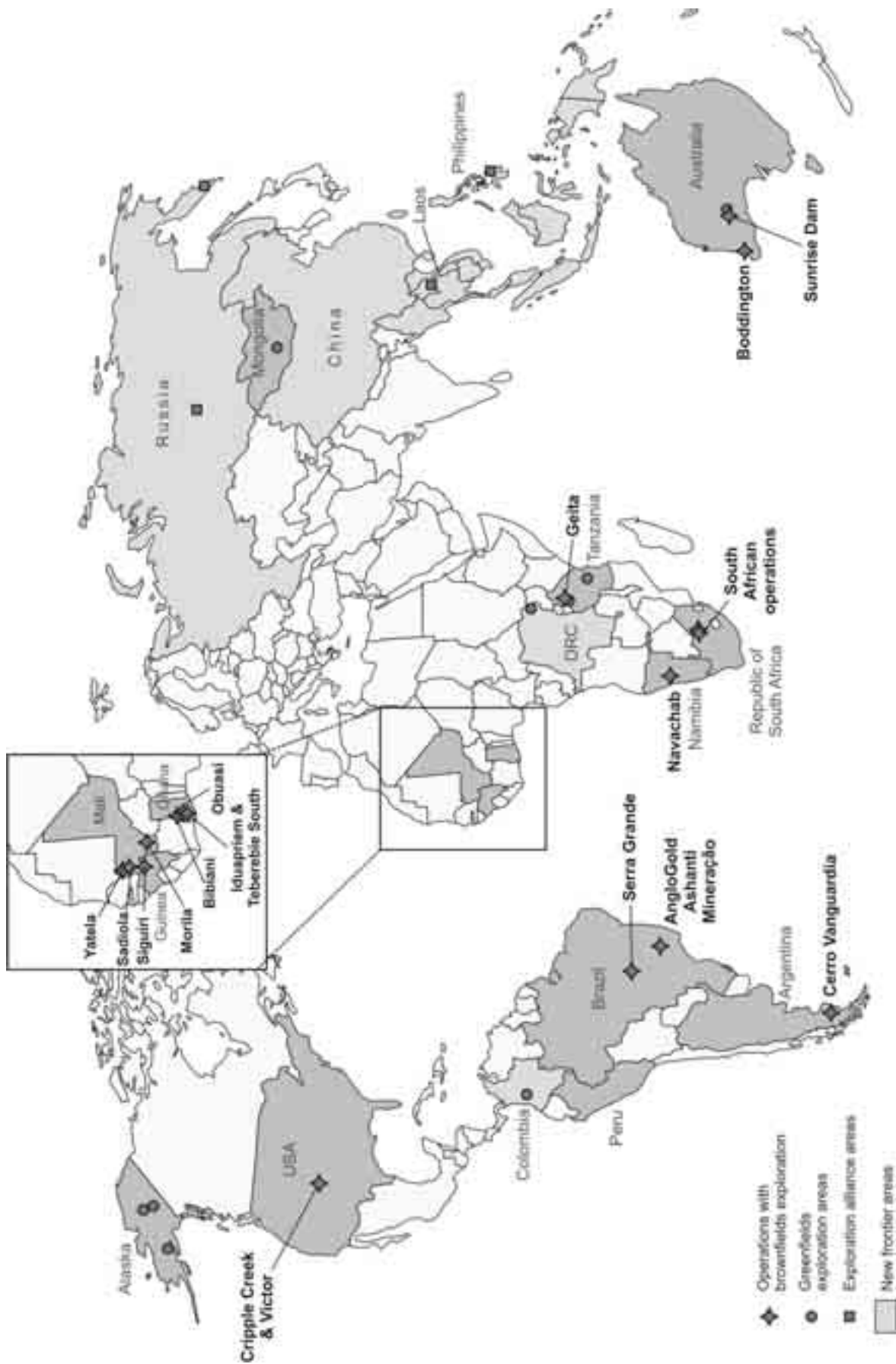
### Group results ...

- ❖ Gold production steady at 1.569Moz.
- ❖ Strong financial performance, including \$74m increase in profit attributable to equity shareholders to \$96m.
- ❖ Headline earnings adjusted for the effect of unrealised non-hedge derivatives up 19% to \$92m.
- ❖ Total cash costs down 2% to \$278/oz, with South African total cash costs 3% lower at R60,287/kg as a result of cost cutting initiatives.
- ❖ Interim dividend of R1.70 (\$0.25)/share declared.

		Quarter		Six months		Quarter		Six months	
		ended Jun 2005	ended Mar 2005	ended Jun 2005	ended Jun 2004 Restated	ended Jun 2005	ended Mar 2005	ended Jun 2005	ended Jun 2004 Restated
		SA rand / Metric				US dollar / Imperial			
<b>Operating review</b>									
Gold									
Produced	- kg / oz (000)	<b>48,792</b>	48,808	97,600	80,972	<b>1,569</b>	1,569	3,138	2,603
Price received <sup>1</sup>	- R/kg / \$/oz	<b>87,314</b>	82,152	84,739	84,152	<b>422</b>	424	423	393
Total cash costs	- R/kg / \$/oz	<b>57,351</b>	54,778	56,064	54,456	<b>278</b>	284	281	254
Total production costs	- R/kg / \$/oz	<b>74,728</b>	70,639	72,683	67,924	<b>363</b>	366	364	317
<b>Financial review</b>									
Gross profit	- R / \$ million	<b>931</b>	255	1,186	971	<b>154</b>	57	211	142
Gross profit adjusted for the effect of unrealised non- hedge derivatives <sup>2</sup>	- R / \$ million	<b>765</b>	676	1,441	1,593	<b>117</b>	112	230	240
Profit attributable to equity shareholders	- R / \$ million	<b>566</b>	50	616	425	<b>96</b>	22	118	64
Headline earnings	- R / \$ million	<b>665</b>	102	767	563	<b>112</b>	31	143	85
Headline earnings adjusted for the effect of unrealised non-hedge derivatives <sup>3</sup>	- R / \$ million	<b>604</b>	464	1,069	956	<b>92</b>	77	169	147
Capital expenditure	- R / \$ million	<b>1,068</b>	864	1,932	1,579	<b>167</b>	144	311	237
Earnings per ordinary share	- cents/share								
Basic		<b>214</b>	19	233	178	<b>36</b>	8	45	27
Diluted		<b>214</b>	19	232	171	<b>36</b>	8	45	26
Headline		<b>251</b>	39	290	236	<b>42</b>	12	54	36
Headline earnings adjusted for the effect of unrealised non-hedge derivatives <sup>3</sup>	- cents/share	<b>228</b>	175	404	401	<b>35</b>	29	64	62
Dividends	- cents/share			170	170			25	26

- Notes:**
1. Price received includes realised non-hedge derivatives.
  2. Refer to note 5 of notes for the definition.
  3. Refer to note 4 of notes for the definition.

\$ represents US dollar, unless otherwise stated.  
Rounding of figures may result in computational discrepancies.



# Operations at a glance

for the quarter ended 30 June 2005

	Price received <sup>1</sup>		Production		Total cash costs		Cash gross profit (loss) <sup>2</sup>		Gross profit (loss) adjusted for the effect of unrealised non-hedge derivatives <sup>3</sup>	
	\$/oz	% Variance <sup>4</sup>	oz (000)	% Variance <sup>4</sup>	\$/oz	% Variance <sup>4</sup>	\$m	% Variance <sup>4</sup>	\$m	% Variance <sup>4</sup>
Sunrise Dam	483	14	131	–	246	(12)	30	36	21	62
Great Noligwa	433	(2)	174	(3)	270	(3)	25	(4)	21	5
TauTona	439	–	120	(8)	243	(11)	23	10	9	–
Mponeng	442	–	128	11	278	(16)	21	62	11	267
Kopanang	437	–	118	(2)	283	(8)	17	21	13	44
Morila <sup>5</sup>	429	1	67	–	173	–	16	(6)	11	(8)
AngloGold Ashanti Mineração	417	–	61	7	161	10	15	(6)	11	(15)
Siguirí <sup>5</sup>	426	(5)	80	86	212	(46)	14	250	9	350
Cripple Creek & Victor	359	(12)	71	(12)	227	3	12	(25)	2	(71)
Cerro Vanguardia <sup>5</sup>	381	(1)	51	(11)	171	21	12	(20)	7	(30)
Sadiola <sup>5</sup>	427	(3)	43	13	256	(10)	7	17	4	100
Serra Grande <sup>5</sup>	415	–	24	–	153	4	7	–	6	–
Obuasi	424	(5)	102	11	324	(10)	5	(29)	(5)	(400)
Iduapriem <sup>5</sup>	422	(5)	40	(13)	339	18	4	(20)	2	–
Geita	351	(6)	165	(14)	331	55	3	(88)	(9)	(190)
Tau Lekoa	438	(2)	68	5	400	(7)	3	200	(2)	60
Yatela <sup>5</sup>	428	–	23	–	299	7	3	(25)	1	(50)
Bibiani	426	(1)	30	(9)	296	2	3	(40)	(1)	–
Navachab	427	(1)	18	(5)	362	(12)	–	(100)	(1)	–
Savuka	441	(1)	33	3	461	(17)	(1)	67	(3)	40
Other			21	(4)			16	100	10	233
AngloGold Ashanti	422	–	1,569	–	278	(2)	235	2	117	4

<sup>1</sup> Price received includes realised non-hedge derivatives.

<sup>2</sup> Gross profit (loss) adjusted for the effect of unrealised non-hedge derivatives plus amortisation of tangible and intangible assets, less non-cash revenues.

<sup>3</sup> Refer to note 5 of notes for the definition.

<sup>4</sup> Variance June 2005 quarter on March 2005 quarter – increase (decrease).

<sup>5</sup> Attributable.

Rounding of figures may result in computational discrepancies.

## Financial and operating review

### OVERVIEW OF THE QUARTER

The June quarter has produced a good financial performance, with steady operational results, in line with those of last quarter. Headline earnings adjusted for the effect of unrealised non-hedge derivatives increased 19% to \$92m, of which \$35m relates to the net positive effect of a statutory tax rate reduction in Ghana to 25% for three years (and 28% thereafter). Profit attributable to equity shareholders was \$74m higher than that of the prior quarter, due to the statutory tax rate reductions and as a result of unrealised non-hedge derivative gains in the second quarter, compared with losses in the first quarter of the year.

A combination of factors had led to a 4% increase in gross profit adjusted for the effect of unrealised non-hedge derivatives of \$117m. The weakening of the rand contributed \$16m to profitability, while savings arising from improved efficiencies were partly offset by lower grades and inflationary increases, with the sustained strength of the oil price continuing to have a negative impact on open-pit operations.

As noted, production was consistent quarter-on-quarter, due to solid performances from the Brazilian, Malian and Australian assets and to significantly improved performances at several other operations, including Siguiiri in Guinea, which posted a 37,000oz production increase following the first full quarter of operation of the newly commissioned carbon-in-pulp plant. Obuasi in Ghana also continued on its course of operational improvement, with production up 11% to 102,000oz and total cash costs down 10% to \$324/oz.

An 11% production improvement at Mponeng helped to offset production declines at several other South African operations, including TauTona and Great Noligwa. After several excellent quarters, production at Geita in Tanzania decreased 14% to 165,000oz and total cash costs climbed 55% to \$331/oz, as a result of both lower grades mined and reduced mining contractor efficiencies as the operation starts the transition to owner-mining.

In Australia, the Sunrise Dam mine enjoyed another record production quarter of 131,000oz, equal to that of the first quarter, with total cash costs improving 11% to A\$320/oz (\$246/oz).

At the AngloGold Ashanti Mineração operation in Brazil, gold production increased 7% to 61,000oz, with total cash costs climbing 10% to \$161/oz, largely as a consequence of the 7% appreciation of the Brazilian real over the quarter. The Cerro Vanguardia mine in Argentina saw lower tonnage and feed grade, as planned in the production programme, with total cash costs 21% higher at \$171/oz, mainly due to retroactive January 2005 wage increases paid out during the second quarter.

Turning to costs, globally increasing mining contractor rates, the strong oil price and the generally higher price of consumables continue to require that cost containment remains a key management focus across the group. The stringent cost savings programmes noted last quarter are beginning to take effect and the South African region in particular made strides over the quarter in achieving its cost cutting targets, with local total cash costs at R60,287/kg constituting a 3% improvement quarter-on-quarter.

Looking ahead, production for the third quarter is estimated to be 1.551Moz at a total cash cost of \$279/oz, assuming the following exchange rates to the US dollar: R6.60; A\$0.76; BRL2.4 and Argentinean peso 2.80. Capital expenditure for the quarter is estimated at \$277m and will be managed in line with profitability.

After serving more than 30 years with AngloGold Ashanti and the Anglo American and De Beers companies, CFO Jonathan Best will retire at the end of July 2005. He is succeeded by Srinivasan Venkatakrisnan, currently deputy CFO, whose professional history includes a senior position with Deloitte and Touche in London, as well as the role of Finance Director of Ashanti from 2000, during which period he led the financial restructuring of the company.

During the quarter under review, the company also indicated that Dr Sam Jonah will move to a non-executive role on the Board of Directors. AngloGold Ashanti's two Chief Operating Officers, Neville Nicolau (Africa) and Roberto Carvalho Silva (International) will now report directly to CEO Bobby Godsell.

## OPERATING RESULTS FOR THE QUARTER

### SOUTH AFRICA

At **Great Noligwa**, volume mined improved by 13%, although yield dropped 7% as anticipated due to lower face values. Gold production fell 4% to 5,401kg (174,000oz) and total cash costs consequently increased 4% to R55,453/kg (\$270/oz). Gross profit adjusted for the effect of unrealised non-hedge derivatives increased 9% to R133m (\$21m).

The Lost-Time Injury Frequency Rate (LTIFR) was 15.66 lost-time injuries per million hours worked (9.51 for the previous quarter). Although Great Noligwa achieved 500,000 fatality-free shifts on 1 June 2005, one employee regrettably lost his life due to a fall of ground incident later in the month.

At **Kopanang**, volume mined improved by 2% quarter-on-quarter. Tonnes treated increased 6%, but this benefit was offset by a 7% yield reduction due to the release of lower grade underground ore. Gold production fell 2% to 3,659kg (118,000oz) as a result of a marginal gold lock-up underground, but total cash costs nevertheless improved 2% to R58,208/kg (\$283/oz) as a result of implemented cost savings initiatives. Gross profit adjusted for the effect of unrealised non-hedge derivatives improved 59% to R83m (\$13m), reflecting the improved total cash costs and a higher received price.

The LTIFR was 12.89 (12.45).

**Tau Lekoa's** volume mined increased 6% quarter-on-quarter, favourably impacting gold production, which increased 5% to 2,126kg (68,000oz). The implementation of cost saving initiatives together with the increased gold production resulted in a 1% improvement in total cash costs to R82,469/kg (\$400/oz). Gross loss adjusted for the effect of unrealised non-hedge derivatives improved significantly from R32m last quarter to R11m (\$2m) for the second quarter.

The LTIFR was 12.79 (10.77).

**Moab Khotsong's** improved gold production of 230kg (7,000oz) is not included in the South Africa region's production, as the revenue continues to be capitalised against pre-production costs. Commercial production is scheduled for 2006.

The LTIFR was 17.45 (9.60).

At **Mponeng**, gold production improved 11% to 3,968kg (128,000oz), due to a 4% increase in volume mined and improvements in grade. Yield climbed 14% to 9.5g/t. Total cash costs declined 10% to R57,209/kg (\$278/oz) as a consequence of the quarter's increased production, and gross profit adjusted for the effect of unrealised non-hedge derivatives accordingly improved to R73m (\$11m), also reflecting the impact of a higher received price.

The LTIFR was 9.90 (15.82). Regrettably, one employee died in a fall of ground incident.

Gold production at **Savuka** rose 4% to 1,038kg (33,000oz), after an improved mining mix led to a significant increase in grade. The production improvement, together with the implementation of cost savings initiatives, resulted in a 12% decrease in total cash costs to R94,685/kg (\$461/oz). Gross loss adjusted for the effect of unrealised non-hedge derivatives declined 41% to R19m (\$3m). In spite of this quarter's operational improvement, Savuka is entering orderly closure mode with likely closure in March 2006.

The LTIFR was 16.75 (13.59).

At **TauTona**, volume mined was in line with that of the previous quarter, although increased off-reef mining due to geological constraints and a 4% drop in face values resulted in an 8% drop in both gold production to 3,747kg (120,000oz) and yield. Total cash costs, at R49,773/kg (\$243/oz), reflected a 5% improvement due to labour reductions and cost management interventions. Gross profit adjusted for the effect of unrealised non-hedge derivatives was held to the previous quarter's level of R59m (\$9m).

The LTIFR was 9.35 (8.84). TauTona achieved 500,000 fatality-free shifts on 19 April 2005.

### ARGENTINA

At **Cerro Vanguardia** (92.5% attributable), gold production decreased in line with previously reported expectations by 11% to 51,000oz due to a decline in feed grade, as well as a decrease in ore treated after a maintenance-related milling stoppage in May.

Total cash costs, at \$171/oz, were 21% higher quarter-on-quarter, owing in part to lower gold production, although retroactive January wage increases paid out during the second quarter and higher plant maintenance costs also contributed. Gross profit adjusted for the effect of unrealised non-hedge derivatives declined to \$7m, primarily as a result of 9% decrease in gold revenue.

The LTIFR was 3.74 (2.14).

## AUSTRALIA

For the third consecutive quarter, **Sunrise Dam** maintained a record production level of 131,000oz. Volume treated also increased this quarter, helping to partly offset the effect of a slight decline in recovered grade to 4.28g/t. Total cash costs improved by 11% to A\$320/oz (\$246/oz), which more than offset the effect of higher mining costs.

Gross profit adjusted for the effect of unrealised non-hedge derivatives increased 59% to A\$27m (\$21m) as a result of a significantly higher realised price.

It is expected that grades at Sunrise Dam will decline from the third quarter of this year, as mining moves from the high grade southern section of the pit to the lower grade northern section. Mining of this section will take approximately 18 months, and will be supplemented by the underground project, where 954m of underground capital development and 895m of operational development were completed this quarter. The project's development inclines and trial mining will access the higher grade ore.

The LTIFR was 4.89 (0.00).

## BRAZIL

At **AngloGold Ashanti Mineração**, gold production increased 7% to 61,000oz, primarily due to improved throughput at Cuiabá mine and increased heap-leaching activity at Córrego do Sítio mine after heavy rains in the first quarter resulted in an accrual of waste material.

Total cash costs, at \$161/oz, were 10% higher as a consequence of the 7% appreciation of the Brazilian real and the increase in mined waste material over the quarter, although the improved gold production worked to partially offset these effects. Gross profit adjusted for the effect of unrealised non-hedge derivatives decreased 15% to \$11m as a

consequence of increased cost of sales, which offset the effect of the higher quantity of gold sold.

The LTIFR was 1.45 (2.25). Regrettably, one of the mining contractor's employees died in a heavy mobile equipment incident at the Córrego do Sítio mine.

At **Serra Grande** (50% attributable), gold production was maintained at last quarter's level of 24,000oz, although total cash costs rose 4% to \$153/oz due to the appreciation of the Brazilian real. Gross profit adjusted for the effect of unrealised non-hedge derivatives was nevertheless maintained at last quarter's level of \$6m as a consequence of a 4% increase in gold sold.

The LTIFR was 0.00 (4.88).

## GHANA

As anticipated and reported last quarter, the higher grade hard rock stockpile at **Bibiani** was depleted and production consequently decreased 9% to 30,000oz. Going forward, production will likely focus on the lower grade satellite pits and old tailings treatment, although a study on the underground potential is presently being reviewed.

Total cash costs increased marginally quarter-on-quarter to \$296/oz and gross loss adjusted for the effect of unrealised non-hedge derivatives also increased from last quarter's break-even point to \$1m.

The LTIFR was 0.00 (2.13).

At **Iduapriem** (85% attributable), gold production decreased by 13% to 40,000oz after crushing and conveyor problems negatively affected plant throughput. Total cash costs consequently increased 18% to \$339/oz. The crusher problems have been addressed and recommendations from the previously reported mine-to-mill study will be implemented during the second half of the year, leading management to expect significant improvements in plant throughput and a related boost in production over the next two quarters. Gross profit adjusted for the effect of unrealised non-hedge derivatives at \$2m, remained unchanged quarter-on-quarter.

The LTIFR was 1.15 (0.00).

As a result of increased tonnages and improved grade, gold production at **Obuasi** climbed 11% to meet a management target of 102,000oz for the quarter. Total cash costs consequently improved by 10% to \$324/oz. In spite of these operational improvements, gross loss adjusted for the effect of unrealised non-hedge derivatives increased from \$1m to \$5m due to a lower price received.

Over the quarter, development and ore definition drilling improved by 16% and 15%, respectively, and in the second half of the year further improvements in the mining mix and flexibility are anticipated.

Regrettably, two employees lost their lives this quarter, one as a result of a fall and the other in a materials handling accident. The LTIFR was 3.56 (4.73).

#### REPUBLIC OF GUINEA

At **Siguiri** (85% attributable), gold production increased 86% from that of the previous quarter to 80,000oz and total cash costs declined 46% to \$212/oz. Gross profit adjusted for the effect of unrealised non-hedge derivatives rose by \$7m to \$9m, due primarily to increased gold income.

The new carbon-in-pulp plant recorded a significantly improved performance, although a series of pipeline failures prevented the plant from operating at full capacity. This issue is being addressed. As the plant begins to operate at optimal levels, likely at the end of the third quarter, the last of the heap-leach gold will be recovered, and production levels will normalise.

On 27 July 2005, AngloGold Ashanti reached an agreement with the government of Guinea to amend the Convention de Base (stability agreement) and resolve all outstanding disputes for a sum of \$7m. In addition, the company has agreed, as part of the settlement, to meet historical and follow-up fees and costs of a consultant that the government retained to advise and assist it in its negotiations and resolution of the dispute. In consideration of the above settlement, the government has irrevocably confirmed its waiver and abandonment of all claims and disputes of any nature whatsoever against the AngloGold Ashanti group of companies.

The LTIFR was 0.64 (0.50).

#### MALI

At **Morila** (40% attributable), production was maintained at last quarter's level of 67,000oz, as an increase in tonnage throughput offset the effect of a planned reduction in recovered grade. Total cash costs, at \$173/oz, remain unchanged quarter-on-quarter. Gross profit adjusted for the effect of unrealised non-hedge derivatives declined by 8% to \$11m due to lower level of gold sold quarter-on-quarter.

The LTIFR was 1.16 (1.24).

At **Sadiola** (38% attributable), gold production increased by 13% to 43,000oz due to a 14% improvement in recovered grade. Although tonnage throughput was negatively affected this quarter by a mill breakdown, Sadiola remains on track to meet its annual attributable production target.

Total cash costs declined by 10% to \$256/oz and gross profit adjusted for the effect of unrealised non-hedge derivatives increased to \$4m, a result of the improvements in recovered grade and production.

The LTIFR was 0.00 (1.16).

At **Yatela** (40% attributable), production was maintained at last quarter's level of 23,000oz, although total cash costs climbed 7% to \$299/oz due to increased mining contractor costs. Gross profit adjusted for the effect of unrealised non-hedge derivatives, at \$1m, was 50% below that of the previous quarter due to the increased operating costs and lower gold sold.

The LTIFR was 0.00 (0.00).

#### NAMIBIA

At **Navachab**, gold production decreased by 5% to 18,000oz due to an 8% decrease in tonnage throughput, which was adversely affected in April by a crusher failure that resulted in significant downtime. Total cash costs declined by 12% to \$362/oz as a result of the reduced production, and the gross loss adjusted for the effect of unrealised non-hedge derivatives was \$1m, compared to last quarter's break-even position.

Going forward, tonnage throughput and production are expected to climb, as the crusher problem has been resolved and the mine is currently producing according to plan. Navachab is expected to achieve its production target for the year.

The LTIFR was 8.49 (0.00).

## TANZANIA

Production at **Geita** declined as anticipated by 14% to 165,000oz due to a 20% decrease in recovered grade. As previously reported, grades and production are both expected to decline for the remainder of the year as the high-grade ore in the current cut-back will be exhausted before the higher grade ore of the next mining phase in the Nyankanga pit can be accessed.

Total cash costs, at \$331/oz, were 55% higher than those of the previous quarter, reflecting both decreased mining contractor efficiency and lower grades. As a result of the decrease in production and higher operating costs, a gross loss adjusted for the effect of unrealised non-hedge derivatives of \$9m was incurred.

To help address these concerns, the AngloGold Ashanti board last quarter approved a move to owner-mining at Geita. The transition will be completed at the end of July 2005, with limited cost benefit evident from the fourth quarter of this year, and the full gains expected from the start of 2006.

The LTIFR was 0.48 (1.06).

## USA

At **Cripple Creek & Victor** (67% ownership with 100% interest in production until initial loans are repaid), gold production decreased 12% to 71,000oz, as ore placed at significant distance to the leach pad liner in the first quarter resulted in delayed recoveries in the second. A production increase should be evident from next quarter.

As a result of the decreased production, total cash costs, at \$227/oz, were 3% higher quarter-on-quarter. Gross profit adjusted for the effect of unrealised non-hedge derivatives declined to \$2m as a result of the lower production and lower realised price.

The LTIFR was 0.00 (0.00). In June, CC&V achieved 19 months without a lost-time accident.

### Notes:

- All references to price received includes realised non-hedge derivatives.
- In the case of joint venture operations, all production and financial results are attributable to AngloGold Ashanti.
- Rounding of figures may result in computational discrepancies.

## Exploration

Total exploration expenditure during the second quarter amounted to \$19m (\$12m expensed and \$7m capitalised), versus \$15m in the previous quarter. Of the \$19m, \$9m (\$2m expensed, \$7m capitalised) was spent on brownfields exploration activities at existing mines, while the remaining \$10m funded greenfields exploration in Tanzania, Alaska, China, Mongolia, Colombia, Peru, Russia and the DRC.

### Brownfields

In **Ghana** at Obuasi, site establishment is in progress for the first two of six surface diamond holes of the Obuasi Ultra Deeps project. These are planned to intersect the Obuasi Fissure 3,400m below surface and are expected to be completed by January 2007.

At Sadiola in **Mali**, the contract for the pre-feasibility study of the Deep Sulphides project will be awarded in the third quarter. Testing of the sulphide potential below the oxide mineralisation at the FE3, FE3 South and FE4 satellite pits over the second quarter did not yield economic intercepts.

At Morila, the third drilling phase has been completed on the underground Samacline target located 500m west of the current pit at a depth of 400m below surface. A preliminary scoping study investigating the underground mining potential of this target is in progress.

At Siguiri in **Guinea**, drilling results remain encouraging on both the oxide and sulphide extensions of the existing pits. Reconnaissance drilling on a previously delineated 2km soil geochemical anomaly at Foulata, which is situated 45km west of the plant, has delineated a potential oxide Mineral Resource.

In **Tanzania** at Geita, diamond drilling of the Geita Hill North East Extension zone continues to intersect mineralisation down dip and along strike. Drilling of the Geita Hill footwall zone is underway to confirm potential additional mineralisation outside the current pit limits.

In **Brazil**, drilling at various sites at Córrego do Sítio continues to define sulphide mineralisation below existing oxide Mineral Resources and a pre-feasibility study and trial mining is planned to commence in 2006.

At Crixás, down-plunge drill testing of the Forquilha Sul and Mina I-West ore-bodies intersected sub-economic mineralisation, effectively closing off known ore shoots at depth. Exploration continues to look for further orebodies down plunge.

In **Australia**, AngloGold Ashanti has divested its interests in selected tenements north of Sunrise Dam Gold Mine to Crescent Gold Limited.

### Greenfields

In the **DRC**, drilling re-commenced in mid-April at Adidi and preliminary results confirm historical grade and tonnage estimates (1.2Moz at 9.9g/t). Preliminary drilling was also carried out on two additional targets derived from mapping and geochemical sampling during the first quarter.

In **Alaska**, results from the initial drilling programme on the Lost Mine South project in the Pogo area delineated a near-surface, broad, shallow dipping gold zone with grades in the 1-2g/t range; follow-up drilling is planned for the third quarter. Two additional high grade targets are planned to be drill tested in Alaska during the summer.

In South America, greenfields exploration is focussed in **Colombia**. Diamond drilling has commenced at the San Carlos project in the Bolivar department and AngloGold Ashanti is planning to drilltest a further three prospects in Colombia in the second half of 2005.

## Review of the gold market

Whilst the quarter saw a wide range of \$30/oz in the spot gold price, and some interesting changes in investor interest in buying gold, the most significant moves during this period occurred in the currency markets.

The \$/euro exchange rate broke down decisively from the euro strength displayed in late 2004 and early 2005. Having tested \$1.35/€ twice during the first quarter of the year, the European currency retreated by almost 10% against the dollar, and closed the quarter at \$1.21/€. The weakness of the euro and resurgence of the US dollar contributed to a shift also in the local currency and the rand weakened against the US dollar by 8% during this quarter. At its weakest point of R6.96/\$1, the South African currency had lost some 19% against the US dollar since the rate of R5.65/\$1 at which the rand opened in 2005. The average \$/euro exchange rate for the quarter of \$1.26/€ reflected the US currency being 4% stronger than in the first quarter of 2005. The South African currency weakened against the US dollar on average by 7% quarter on quarter.

### Gold

The statistics of the gold spot price in US dollars reveal little of the changes in the gold market during the period under review. The average spot price for the quarter of \$427/oz was unchanged from the average price of gold for the first quarter of 2005. The high of \$444/oz was within two dollars of the high for the first quarter, and the low of \$413/oz was similarly close to the first quarter.

However, the behaviour of the gold price was remarkable for its divergence from movements in the value of the US dollar during this quarter. See *Graph 1 : Euro / US\$ Exchange Rate & US\$ Gold Spot Price: January 2004 – July 2005 Indexed*. The distinctive feature of the gold price rally of the past four years has been the extent to which the gold price has risen in proportion to the weakening of the US dollar against the euro, and fallen back when the US dollar has strengthened against the euro. During this quarter however, as the US dollar strengthened against the euro, the US dollar spot price of gold actually finished June some 2% firmer on the quarter. As a direct consequence of the stronger \$/weaker euro, and a stronger spot gold price, the euro price of gold rose by 12% during this quarter to a high of €368/oz.

In effect, traders on the New York Comex elected to remain long gold as the US currency strengthened. There appeared to be no single justification for this change of trading strategy on Comex. One important element was that of short covering on the Comex. Certain investors had gone significantly short gold early in the quarter when US dollar strength first emerged, taking Comex to a net long position of only 5.6Moz, the lowest net long position since mid-2003. When this short move attracted no further selling interest, the market saw sustained short covering in June notwithstanding the strong US dollar. This reaction on Comex took the net long gold position on the exchange back up to almost 18Moz net long at the end of June. In effect, investors were buying US dollars and buying gold during the same period. See *Graph 2 : New York Comex Gold Net Open Position vs IMM US\$ Net Open Position 2001 – 2005*.

The correction in the spot gold market was still under-way at the end of the quarter, when the gold price closed at \$434/oz. After the end of the quarter, the price fell as low as \$421/oz, although it has since recovered slightly to trade at around \$425/oz.

The sustained investor interest in gold during this quarter does not necessarily reflect a complete break between gold price movement and changes in the value of the US dollar. It is very likely that gold will again respond positively to renewed US dollar weakness in the future, but off a higher base. The events of this quarter confirm the fact that the New York Comex remains the primary market place for investor and speculator activity in gold, and for the spot pricing of the metal. See *Graph 3 : New York Comex Net Open Interest Position and Gold Price: January 2004-July 2005*.

The combination of a strong spot gold price and a weaker rand during the quarter produced sharply higher rand gold prices and some relief for local gold producers. From a low of R81,500/kg during the quarter, the local price reached almost R96,500/kg, while the average of R87,800/kg for the quarter was R5,000/kg or 6% higher than the average price for the first quarter. During July, however, a degree of recovery in the rand has taken the local gold price back below R90,000/kg.

## Physical Demand

Physical offtake of gold continued to improve during the first quarter of 2005, following the healthy performance of demand in 2004. Consumption of gold in jewellery in the first quarter increased by 17% year-on-year, largely on the back of growth in Indian demand. Gold jewellery offtake in the developed markets of the USA, Europe and Japan remained flat to down. Net bullion supply on the market increased by 23%, driven particularly by higher official sales of 254t during the first quarter and significantly reduced de-hedging by gold producers, and the market remained effectively in balance.

However, gold offtake in the second quarter suffered from the combination of higher gold prices in local currencies (on the back of the stronger US dollar) and seasonally low demand for jewellery. Offtake in India has fallen particularly during this quarter due to these two factors. Nevertheless, the major physical gold markets seem to have adjusted to higher gold prices in general, and demand would be expected to increase again should gold weaken from the higher spot price levels at which it traded at the end of the second quarter.

## Official Sector

The official sector contributed to better sentiment towards gold during this quarter with the announcement by the G8 of a debt relief programme for heavily indebted poor countries which would not be funded by the revaluation or sale of the gold reserves of the IMF, as had been proposed in recent months. Although most commentators had expressed doubt that the proposal by UK's Gordon Brown, for the funding of debt relief by the sale of IMF gold reserves would succeed, the announcement removed a residual uncertainty that new sales might cap the gold market for a time.

The high level of official gold sales during the early months of 2005 has led to less official selling since then, and assisted the physical market in the second quarter, when physical demand has fallen.

## Currencies

At the end of June, the US dollar had gained 11% against the euro since the beginning of 2005, most of this during the second quarter of the year. During July, the US dollar gained further to reach a high of \$1.186/€, a level last seen in mid-2004.

During the four years of correction in the US currency against the euro since 2001, the market has seen several US dollar rallies led by economic good news from the USA, where cyclical strength in the US economy has outweighed the structural problems in that economy. However, during the second quarter of 2005, the cyclical advantages of sound economic growth and rising interest rates in the USA were complemented by recognition of major negative factors in European economies, and the fact that these weaknesses were fundamentally at odds with a stronger euro. Sentiment towards the euro was also damaged by political uncertainties raised by the referenda in France and Holland in June, in which voters rejected the new European Constitution. The US dollar was the direct beneficiary of the market's concern about the European currency, and market fears about the US trade and fiscal deficits receded during the period under review.

Whilst the dollar has moved largely on good news in the US economy and bad news in Europe, the stronger US currency has now broken through the technical trend lines of the correction of the past four years. This technical break has occurred in respect of the exchange rate both against the euro and against a trade-weighted currency index. It will be interesting to see what this means for the US currency during the rest of this year, particularly if cyclically favourable circumstances in the US should weaken. Market commentary is divided between institutions that now see a stronger dollar by the end of 2005, and those who still expect dollar weakness to resume, albeit with more modest year-end targets.

Whilst South Africa suffered no particular negative economic shift during this quarter, the local currency lost ground sharply against the US dollar. This move was driven by the stronger dollar, but also by some public recognition by leading monetary and political figures of the harm done to sectors of the South African economy by a strong local currency.

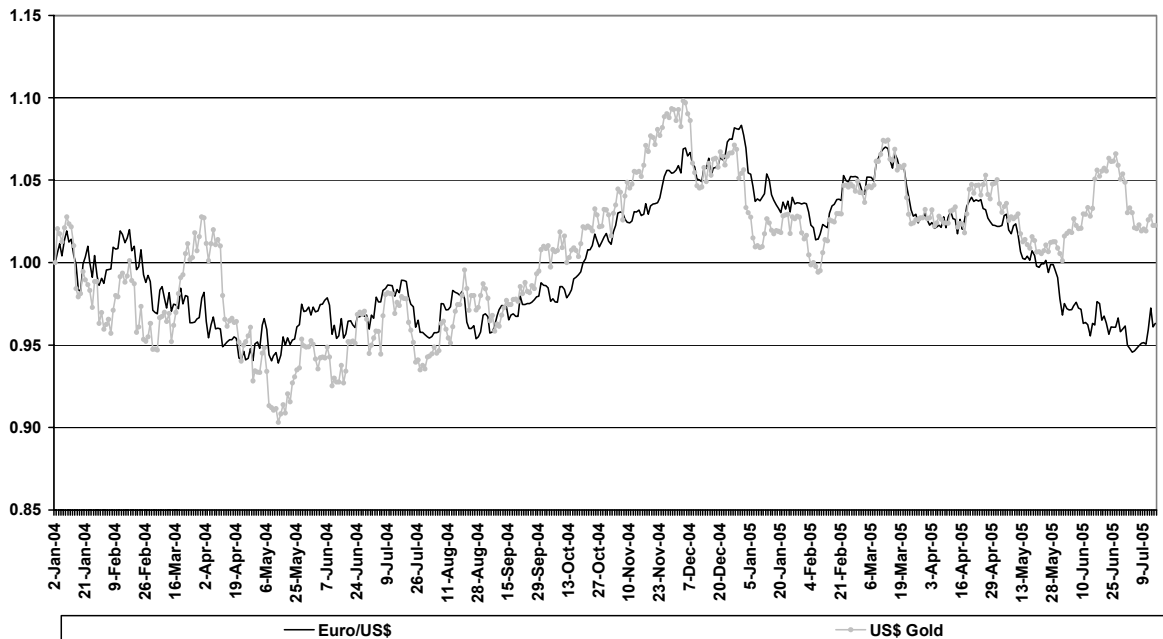
Whilst the further movement of the dollar against the euro will obviously influence rand exchange rates, the market seems more persuaded now of the likelihood of a weaker rand going forward.

### Hedging

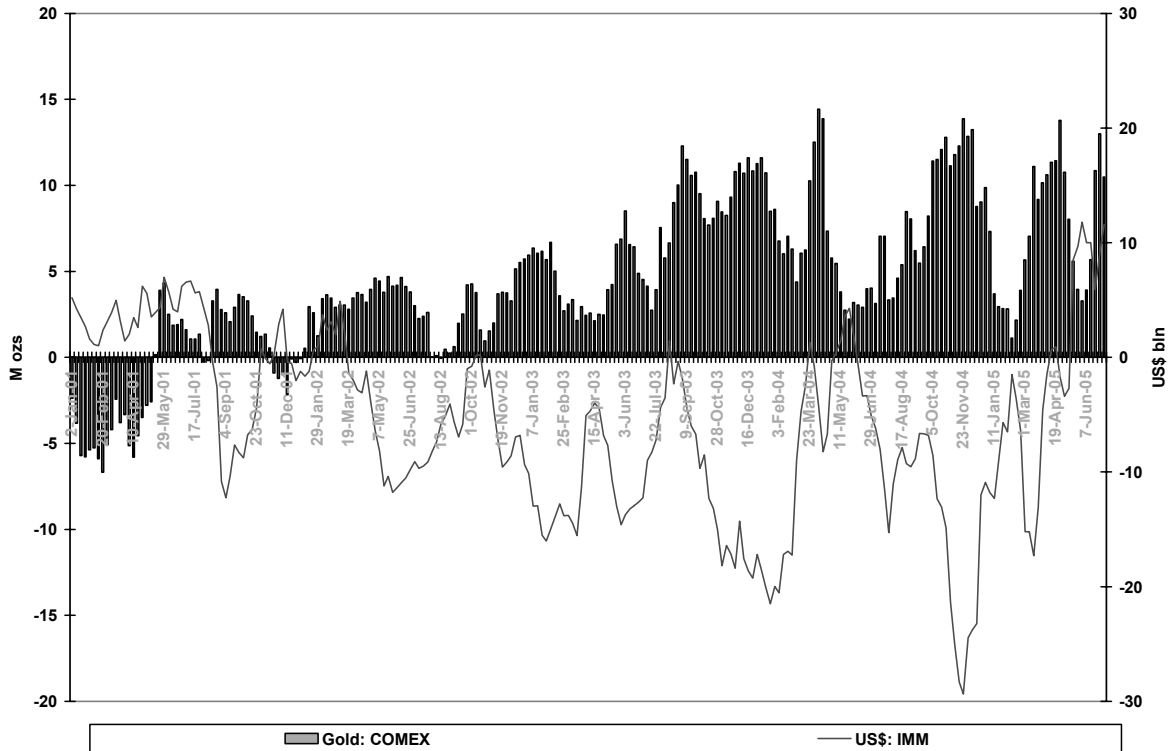
As at 30 June 2005, the net delta hedge position of AngloGold Ashanti was 10.32Moz or 321t valued at the spot gold price at the end of the quarter of \$434.50/oz. This net delta position reflects a decrease of some 400,000oz or 12.5t in the net size of the AngloGold Ashanti hedge compared with the position at the end of the previous quarter. The net reduction reflects the maturing of price contracts during the past quarter.

The marked-to-market value of the hedge position as at 30 June 2005 was negative \$1,032m, little changed from the negative value of \$1,066m recorded at the end of March 2005. However, this value of \$1,032m was calculated off a closing spot price \$7/oz higher than the closing price at the end of March at which the previous valuation was calculated. The marked-to-market value of the hedge at 27 July 2005 at a spot price of \$422.80/oz was negative \$925.620m. The price received by the company for the quarter under review was \$422/oz, compared with an average spot price for the period of \$427/oz. The company continues to manage its hedged positions actively, and to reduce overall levels of pricing commitments in respect of future gold production by the company.

**GRAPH 1**  
**EURO / US\$ EXCHANGE RATE & US\$ GOLD SPOT PRICE**  
**JANUARY 2004 – JULY 2005 INDEXED**

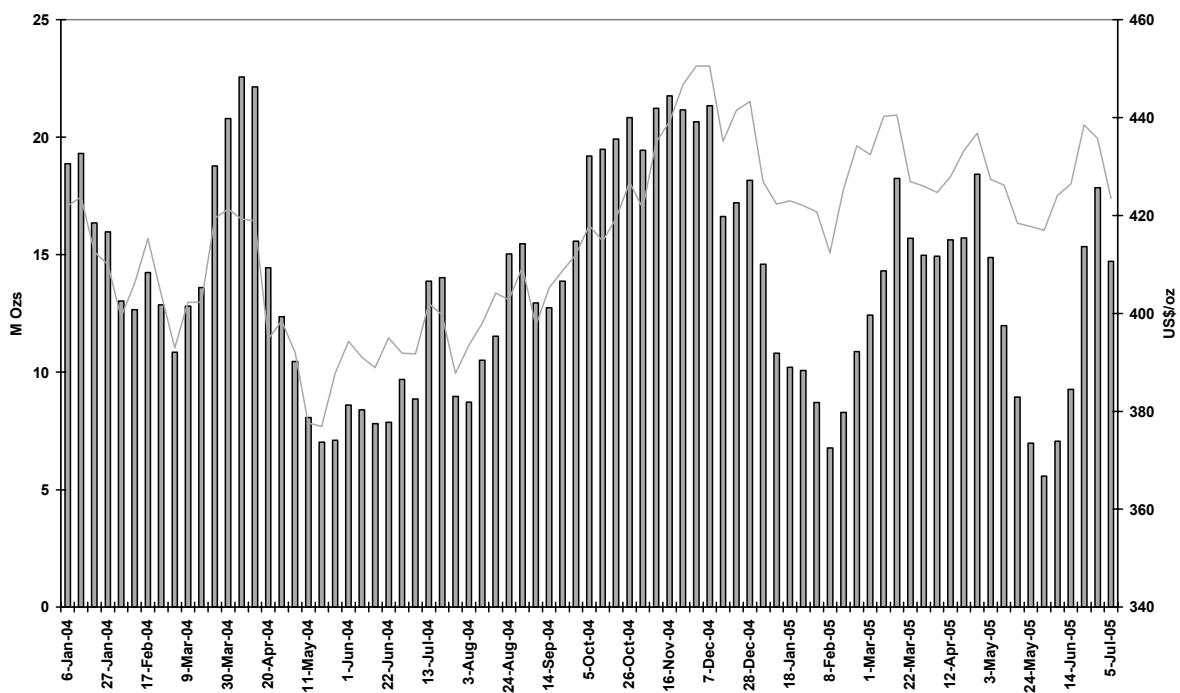


**GRAPH 2**  
**NEW YORK COMEX GOLD NET OPEN POSITION VS IMM US\$ NET OPEN POSITION**  
**2001 – 2005**



Source : HSBC

**GRAPH 3**  
**NEW YORK COMEX NET OPEN INTEREST POSITION AND GOLD PRICE**  
**JANUARY 2004-JULY 2005**



## Hedge position

As at 30 June 2005, the group had outstanding the following forward-pricing commitments against future production. The total net delta tonnage of the hedge of the company on this date was 10.32Moz or 321t (at 31 March 2005: 10.72Moz or 334t).

The marked-to-market value of all hedge transactions making up the hedge positions was a negative \$1.032bn (negative R6.94bn) as at 30 June 2005 (as at 31 March 2005: \$1.066bn or R6.62bn). This value at 30 June 2005 was based on a gold price of \$434.50/oz, exchange rates of R/\$6.7240 and A\$/0.7560 and the prevailing market interest rates and volatilities at that date.

As at 27 July 2005, the marked-to-market value of the hedge book was a negative \$925.620m (negative R6.192bn), based on a gold price of \$422.80/oz and exchange rates of R/\$6.69 and A\$/0.7546 and the prevailing market interest rates and volatilities at the time.

These marked-to-market valuations are not predictive of the future value of the hedge position, nor of future impact on the revenue of the company. The valuation represents the cost of buying all hedge contracts at the time of valuation, at market prices and rates available at the time.

	Year	2005	2006	2007	2008	2009	2010-2014	Total
<b>DOLLAR GOLD</b>								
Forward contracts	Amount (kg)	11,511	16,654	32,993	30,076	26,288	53,566	171,088
	US\$/oz	\$310	\$316	\$344	\$365	\$380	\$402	\$366
Put options purchased	Amount (kg)	4,408	8,592	1,455				14,455
	US\$/oz	\$333	\$345	\$292				\$336
Put options sold	Amount (kg)	5,132	4,354		855	1,882	9,409	21,632
	US\$/oz	\$411	\$339		\$390	\$400	\$430	\$403
Call options purchased	Amount (kg)	11,860	11,211	6,357				29,428
	US\$/oz	\$329	\$333	\$344				\$334
Call options sold	Amount (kg)	18,607	31,224	27,560	27,516	26,211	76,048	207,166
	US\$/oz	\$360	\$381	\$374	\$380	\$407	\$468	\$413
<b>RAND GOLD</b>								
Forward contracts	Amount (kg)	* 1,218		2,449		933		2,164
	Rand per kg	R109,988		R97,520		R116,335		R160,520
Put options purchased	Amount (kg)		1,875					1,875
	Rand per kg		R93,602					R93,602
Put options sold	Amount (kg)	7,620	1,400					9,020
	Rand per kg	R91,907	R88,414					R91,365
Call options purchased	Amount (kg)							
	Rand per kg							
Call options sold	Amount (kg)	9,889	4,517	311		2,986	5,972	23,675
	Rand per kg	R93,515	R102,447	R108,123		R202,054	R223,756	R141,953
<b>A DOLLAR GOLD</b>								
Forward contracts	Amount (kg)	* 1,885	1,555	8,398	3,110	3,390	3,110	17,678
	A\$ per oz	A\$615	A\$762	A\$650	A\$678	A\$665	A\$689	A\$744
Put options purchased	Amount (kg)							
	A\$ per oz							
Put options sold	Amount (kg)							
	A\$ per oz							
Call options purchased	Amount (kg)	3,110	6,221	3,732	3,110	1,244	3,110	20,527
	A\$ per oz	A\$724	A\$673	A\$668	A\$680	A\$694	A\$712	A\$688
Call options sold	Amount (kg)							
	A\$ per oz							
** Total net gold:	Delta (kg)	14,198	32,959	59,879	54,809	50,663	108,569	321,077
	Delta (oz)	456,476	1,059,655	1,925,152	1,762,148	1,628,851	3,490,569	10,322,850

\* Long position.

\*\* The Delta of the hedge position indicated above is the equivalent gold position that would have the same marked-to-market sensitivity for a small change in the gold price. This is calculated using the Black-Scholes option formula with the ruling market prices, interest rates and volatilities as at 30 June 2005.

Rounding of figures may result in computational discrepancies.

	Year	2005	2006	2007	2008	2009	2010-2014	Total
<b>DOLLAR SILVER</b>								
Forward contracts	Amount (kg)							
	\$ per oz							
Put options purchased	Amount (kg)	21,772	43,545	43,545	24,883			133,745
	\$ per oz	\$7.11	\$7.11	\$7.40	\$7.40			\$7.26
Put options sold	Amount (kg)	21,772	43,545	43,545	24,883			133,745
	\$ per oz	\$6.02	\$6.02	\$5.93	\$5.75			\$5.94
Call options purchased	Amount (kg)							
	\$ per oz							
Call options sold	Amount (kg)	21,772	43,545	43,545	24,883			133,745
	\$ per oz	\$8.11	\$8.11	\$8.40	\$8.00			\$8.19

The following table indicates the group's currency hedge position at 30 June 2005

	Year	2005	2006	2007	2008	2009	2010-2014	Total
<b>RAND DOLLAR (000)</b>								
Forward contracts	Amount (\$)	7,488						7,488
	US\$/R	R6.34						R6.34
Put options purchased	Amount (\$)	60,000						60,000
	US\$/R	R6.97						R6.97
Put options sold	Amount (\$)	60,000						60,000
	US\$/R	R6.69						R6.69
Call options purchased	Amount (\$)							
	US\$/R							
Call options sold	Amount (\$)	115,000						115,000
	US\$/R	R7.13						R7.13
<b>A DOLLAR (000)</b>								
Forward contracts	Amount (\$)	15,970	39,222					55,192
	A\$/US\$	A\$0.61	A\$0.75					A\$0.70
Put options purchased	Amount (\$)							
	A\$/US\$							
Put options sold	Amount (\$)							
	A\$/US\$							
Call options purchased	Amount (\$)							
	A\$/US\$							
Call options sold	Amount (\$)	50,000	20,000					70,000
	A\$/US\$	A\$0.75	A\$0.74					A\$0.75
<b>BRAZILIAN REAL (000)</b>								
Forward contracts	Amount (\$)	12,000	24,000	4,000				40,000
	US\$/BRL	BRL2.94	BRL3.18	BRL3.31				BRL3.12
Put options purchased	Amount (\$)							
	US\$/BRL							
Put options sold	Amount (\$)							
	US\$/BRL							
Call options purchased	Amount (\$)							
	US\$/BRL							
Call options sold	Amount (\$)	10,000	20,000					30,000
	US\$/BRL	BRL3.03	BRL3.29					BRL3.20

*Rounding of figures may result in computational discrepancies.*

## Group income statement

SA Rand million	Notes	Quarter ended	Quarter ended	Quarter ended	Six months ended	Six months ended
		June 2005	March 2005	June 2004	June 2005	June 2004
		Unaudited	Unaudited	Restated Unaudited	Unaudited	Restated Unaudited
<b>Revenue</b>		<b>4,563</b>	4,016	3,754	8,579	7,095
Gold income		4,404	3,858	3,559	8,261	6,693
Cost of sales	2	(3,620)	(3,415)	(2,925)	(7,036)	(5,338)
Non-hedge derivatives		147	(188)	(379)	(40)	(384)
Gross Profit		931	255	255	1,186	971
Corporate administration and other expenses		(103)	(99)	(105)	(201)	(181)
Market development costs		(21)	(21)	(22)	(42)	(48)
Exploration costs		(78)	(60)	(72)	(138)	(131)
Amortisation of intangible assets		-	-	(54)	-	(106)
Impairment of tangible assets		(45)	-	-	(45)	-
Other operating expenses		(38)	(23)	(22)	(63)	(27)
Other operating income		8	4	-	12	-
<b>Operating profit (loss)</b>		<b>654</b>	56	(21)	709	478
Interest receivable		39	54	80	93	172
Other net (expense) income		(4)	7	(7)	4	(8)
(Loss) profit on disposal of assets and subsidiaries		-	(1)	7	(1)	27
Finance costs and unwinding of decommissioning and restoration obligations		(159)	(148)	(124)	(308)	(282)
Fair value adjustment on option component of convertible bond		79	115	397	194	248
Fair value gains (losses) on interest rate swaps		11	(16)	(15)	(5)	(33)
Share of associates profit (loss)		2	1	(2)	3	(1)
<b>Profit before taxation</b>		<b>621</b>	68	316	689	602
Taxation	3	62	59	87	121	(64)
<b>Profit after taxation</b>		<b>683</b>	127	403	810	538
Discontinued operations	7	(69)	(51)	(52)	(121)	(52)
		<b>614</b>	76	351	690	486
<b>Allocated as follows</b>						
Equity Shareholders		566	50	326	616	425
Minority interest		48	26	25	74	61
		<b>614</b>	76	351	690	486
<b>Basic earnings per ordinary share (cents)</b>						
Profit from continuing operations <sup>1</sup>		240	38	149	278	200
Loss from discontinued operations <sup>1</sup>		(26)	(19)	(21)	(46)	(22)
Profit		<b>214</b>	19	129	233	178
<b>Diluted earnings per ordinary share (cents)</b>						
Profit from continuing operations <sup>2</sup>		240	38	141	278	192
Loss from discontinued operations <sup>2</sup>		(26)	(19)	(19)	(46)	(21)
Profit		<b>214</b>	19	121	232	171
<b>Dividends<sup>3</sup></b>						
- Rm					450	449
- cents per share					170	170

<sup>1</sup> Calculated on the basic weighted average number of ordinary shares.

<sup>2</sup> Calculated on the diluted weighted average number of ordinary shares.

<sup>3</sup> Dividends are translated at actual rates on date of payment. The current period is only indicative.

Rounding of figures may result in computational discrepancies.

## Group income statement

US Dollar million	Notes	Quarter ended	Quarter ended	Quarter ended	Six months ended	Six months ended
		June 2005	March 2005	June 2004	June 2005	June 2004
		Unaudited	Unaudited	Restated Unaudited	Unaudited	Restated Unaudited
<b>Revenue</b>		<b>708</b>	<b>668</b>	<b>570</b>	<b>1,377</b>	<b>1,065</b>
Gold income		<b>684</b>	642	541	1,326	1,005
Cost of sales	2	<b>(565)</b>	(568)	(445)	(1,133)	(801)
Non-hedge derivatives		<b>35</b>	(17)	(62)	18	(62)
Gross Profit		<b>154</b>	57	34	211	142
Corporate administration and other expenses		<b>(16)</b>	(16)	(16)	(32)	(27)
Market development costs		<b>(3)</b>	(4)	(3)	(7)	(7)
Exploration costs		<b>(12)</b>	(10)	(11)	(22)	(20)
Amortisation of intangible assets		-	-	(8)	-	(16)
Impairment of tangible assets		<b>(7)</b>	-	-	(7)	-
Other operating expenses		<b>(6)</b>	(4)	(3)	(10)	(4)
Other operating income		<b>1</b>	1	-	2	-
<b>Operating profit (loss)</b>		<b>111</b>	24	(7)	135	68
Interest receivable		<b>6</b>	9	12	15	26
Other net (expense) income		<b>(1)</b>	1	(1)	-	(2)
Profit on disposal of assets and subsidiaries		-	-	-	-	4
Finance costs and unwinding of decommissioning and restoration obligations		<b>(25)</b>	(24)	(19)	(50)	(42)
Fair value adjustment on option component of convertible bond		<b>13</b>	19	61	32	38
Fair value gains (losses) on interest rate swaps		<b>2</b>	(3)	(2)	(1)	(5)
Share of associates profit (loss)		-	-	-	-	-
<b>Profit before taxation</b>		<b>107</b>	26	44	132	87
Taxation	3	<b>9</b>	9	15	18	(7)
<b>Profit after taxation</b>		<b>116</b>	35	58	150	80
Discontinued operations	7	<b>(12)</b>	(9)	(8)	(21)	(8)
		<b>103</b>	26	50	130	72
<b>Allocated as follows</b>						
Equity Shareholders		<b>96</b>	22	48	118	64
Minority interest		<b>7</b>	4	2	12	8
		<b>103</b>	26	50	130	72
<b>Basic earnings per ordinary share (cents)</b>						
Profit from continuing operations <sup>1</sup>		<b>41</b>	12	22	52	30
Loss from discontinued operations <sup>1</sup>		<b>(5)</b>	(3)	(3)	(8)	(3)
Profit		<b>36</b>	8	19	45	27
<b>Diluted earnings per ordinary share (cents)</b>						
Profit from continuing operations <sup>2</sup>		<b>41</b>	12	21	52	29
Loss from discontinued operations <sup>2</sup>		<b>(5)</b>	(3)	(3)	(8)	(3)
Profit		<b>36</b>	8	18	45	26
<b>Dividends<sup>3</sup></b>						
- \$m					66	68
- cents per share					25	26

<sup>1</sup> Calculated on the basic weighted average number of ordinary shares.

<sup>2</sup> Calculated on the diluted weighted average number of ordinary shares.

<sup>3</sup> Dividends are translated at actual rates on date of payment. The current period is only indicative.

Rounding of figures may result in computational discrepancies.

## Group balance sheet

SA Rand million	Notes	As at June 2005 Unaudited	As at March 2005 Unaudited	As at June 2004 Restated Unaudited	As at December 2004 Restated Audited
<b>ASSETS</b>					
<b>Non-current assets</b>					
Tangible assets		37,528	35,634	34,079	33,195
Intangible assets		2,727	2,569	2,524	2,347
Investments in associates		254	43	43	43
Investment properties		60	51	42	44
Other investments		550	190	91	179
Inventories		789	677	140	124
Derivatives		403	458	832	1,055
Deferred taxation		215	-	-	-
Other non-current assets		170	524	351	487
		<b>42,696</b>	<b>40,146</b>	<b>38,102</b>	<b>37,474</b>
<b>Current assets</b>					
Inventories		2,619	2,365	2,371	2,363
Trade and other receivables		2,025	1,726	1,873	1,747
Derivatives		3,053	3,512	1,904	2,767
Current portion of other non-current assets		5	5	385	5
Cash and cash equivalents		1,835	1,744	3,458	1,758
		<b>9,537</b>	<b>9,352</b>	<b>9,991</b>	<b>8,640</b>
Non-current assets held for sale		100	-	-	-
		<b>9,637</b>	<b>9,352</b>	<b>9,991</b>	<b>8,640</b>
<b>TOTAL ASSETS</b>		<b>52,333</b>	<b>49,498</b>	<b>48,093</b>	<b>46,114</b>
<b>EQUITY AND LIABILITIES</b>					
<b>Equity</b>					
Ordinary share capital and premium	9	19,006	18,995	18,980	18,987
Retained earnings and other reserves	10	1,410	(193)	70	(1,200)
Shareholders' equity		<b>20,416</b>	<b>18,802</b>	<b>19,050</b>	<b>17,787</b>
Minority interests	11	401	367	350	327
		<b>20,817</b>	<b>19,169</b>	<b>19,400</b>	<b>18,114</b>
<b>Non-current liabilities</b>					
Borrowings		10,500	9,934	8,088	7,262
Provisions		2,729	2,548	2,117	2,339
Derivatives		2,130	2,191	2,393	3,032
Deferred taxation		8,231	7,885	8,211	7,542
		<b>23,590</b>	<b>22,558</b>	<b>20,809</b>	<b>20,175</b>
<b>Current liabilities</b>					
Trade and other payables		2,919	2,580	2,940	2,650
Current portion of borrowings		1,141	889	2,125	1,800
Derivatives		3,551	3,948	2,662	3,007
Taxation		315	354	157	368
		<b>7,926</b>	<b>7,771</b>	<b>7,884</b>	<b>7,825</b>
<b>Total liabilities</b>		<b>31,516</b>	<b>30,329</b>	<b>28,693</b>	<b>28,000</b>
<b>TOTAL EQUITY AND LIABILITIES</b>		<b>52,333</b>	<b>49,498</b>	<b>48,093</b>	<b>46,114</b>
Net asset value - cents per share		7,715	7,108	7,205	6,726

Rounding of figures may result in computational discrepancies.

## Group balance sheet

US Dollar million	Notes	As at June 2005 Unaudited	As at March 2005 Unaudited	As at June 2004 Restated Unaudited	As at December 2004 Restated Audited
<b>ASSETS</b>					
<b>Non-current assets</b>					
Tangible assets		5,615	5,727	5,473	5,880
Intangible assets		408	413	405	416
Investments in associates		38	7	7	8
Investment properties		9	8	7	8
Other investments		82	31	14	32
Inventories		118	109	22	22
Derivatives		60	74	134	187
Deferred taxation		32	-	-	-
Other non-current assets		26	84	56	86
		<b>6,388</b>	<b>6,453</b>	<b>6,118</b>	<b>6,639</b>
<b>Current assets</b>					
Inventories		392	380	381	419
Trade and other receivables		303	277	301	309
Derivatives		457	564	306	490
Current portion of other non-current assets		1	1	62	1
Cash and cash equivalents		275	280	555	312
		<b>1,427</b>	<b>1,502</b>	<b>1,604</b>	<b>1,531</b>
Non-current assets held for sale		15	-	-	-
		<b>1,442</b>	<b>1,502</b>	<b>1,604</b>	<b>1,531</b>
<b>TOTAL ASSETS</b>		<b>7,830</b>	<b>7,955</b>	<b>7,723</b>	<b>8,170</b>
<b>EQUITY AND LIABILITIES</b>					
<b>Equity</b>					
Ordinary share capital and premium	9	2,843	3,053	3,048	3,364
Retained earnings and other reserves	10	211	(31)	12	(213)
Shareholders' equity		<b>3,054</b>	<b>3,022</b>	<b>3,060</b>	<b>3,151</b>
Minority interests	11	60	59	56	58
		<b>3,114</b>	<b>3,081</b>	<b>3,116</b>	<b>3,209</b>
<b>Non-current liabilities</b>					
Borrowings		1,571	1,597	1,299	1,286
Provisions		408	409	340	415
Derivatives		319	352	384	537
Deferred taxation		1,231	1,267	1,319	1,336
		<b>3,529</b>	<b>3,625</b>	<b>3,342</b>	<b>3,574</b>
<b>Current liabilities</b>					
Trade and other payables		437	415	471	470
Current portion of borrowings		171	143	341	319
Derivatives		531	634	428	533
Taxation		47	57	25	65
		<b>1,186</b>	<b>1,249</b>	<b>1,265</b>	<b>1,387</b>
<b>Total liabilities</b>		<b>4,715</b>	<b>4,874</b>	<b>4,607</b>	<b>4,961</b>
<b>TOTAL EQUITY AND LIABILITIES</b>		<b>7,830</b>	<b>7,955</b>	<b>7,723</b>	<b>8,170</b>
Net asset value - cents per share		1,154	1,142	1,157	1,191

Rounding of figures may result in computational discrepancies.

## Group cash flow statement

	Quarter ended June 2005	Quarter ended March 2005	Quarter ended June 2004 Restated	Six months ended June 2005	Six months ended June 2004 Restated
SA Rand million	Unaudited	Unaudited	Unaudited	Unaudited	Unaudited
<b>Cash flows from operating activities</b>					
Cash generated from operations	1,191	825	787	2,016	1,323
Cash utilised by discontinued operations	(62)	(51)	(6)	(113)	7
Environmental, rehabilitation and other expenditure	(16)	(12)	(13)	(29)	(30)
Taxation paid	(34)	(61)	(56)	(95)	(161)
<b>Net cash inflow from operating activities</b>	<b>1,078</b>	<b>701</b>	<b>712</b>	<b>1,779</b>	<b>1,139</b>
<b>Cash flows from investing activities</b>					
Capital expenditure	(1,068)	(864)	(1,012)	(1,932)	(1,579)
Proceeds from disposal of tangible assets	-	-	9	-	35
Investments acquired	(89)	-	(2)	(89)	(2)
Acquisition of subsidiary net of cash	-	-	(802)	-	(802)
Net loans (advanced) repaid	(29)	(1)	74	(31)	76
Utilised in hedge restructure	-	(415)	-	(415)	-
<b>Net cash outflow from investing activities</b>	<b>(1,186)</b>	<b>(1,280)</b>	<b>(1,733)</b>	<b>(2,466)</b>	<b>(2,272)</b>
<b>Cash flows from financing activities</b>					
Proceeds from issue of share capital	10	8	1	18	12
Share issue expenses	-	-	(1)	-	(1)
Proceeds from borrowings	545	2,568	60	3,113	6,797
Repayment of borrowings	(407)	(1,488)	(1,379)	(1,895)	(4,571)
Interest received	27	45	61	72	133
Finance costs	(68)	(221)	(78)	(288)	(253)
Dividends paid	(31)	(488)	(59)	(519)	(817)
<b>Net cash inflow (outflow) from financing activities</b>	<b>77</b>	<b>424</b>	<b>(1,395)</b>	<b>501</b>	<b>1,300</b>
<b>Net (decrease) increase in cash and cash equivalents</b>	<b>(31)</b>	<b>(155)</b>	<b>(2,416)</b>	<b>(186)</b>	<b>167</b>
Translation	123	141	6	264	(76)
Opening cash and cash equivalents	1,744	1,758	5,868	1,758	3,367
<b>Closing cash and cash equivalents</b>	<b>1,835</b>	<b>1,744</b>	<b>3,458</b>	<b>1,835</b>	<b>3,458</b>
<b>Cash generated from operations</b>					
Profit before taxation	621	68	316	689	602
Adjusted for:					
Non-cash movements	126	(32)	(39)	95	(8)
Movement on non-hedge derivatives	(185)	427	386	242	568
Deferred stripping costs	17	8	(40)	25	(114)
Amortisation of tangible assets	787	732	600	1,519	1,046
Amortisation of intangible assets	3	3	54	6	106
Impairment of tangible assets	45	-	-	45	-
Interest receivable	(39)	(54)	(81)	(93)	(172)
Loss (profit) on disposal of assets and subsidiaries	-	1	(7)	1	(27)
Finance costs and unwinding of decommissioning and restoration obligations	159	148	124	308	282
Fair value adjustment on option component of convertible bond	(79)	(115)	(397)	(194)	(248)
Movement in working capital	(267)	(361)	(130)	(628)	(712)
	<b>1,191</b>	<b>825</b>	<b>787</b>	<b>2,016</b>	<b>1,323</b>
<b>Movement in working capital</b>					
(Increase) decrease in inventories	(339)	(567)	(157)	(906)	39
Increase in trade and other receivables	(268)	-	(168)	(267)	(225)
Increase (decrease) in trade and other payables	340	206	195	546	(526)
	<b>(267)</b>	<b>(361)</b>	<b>(130)</b>	<b>(628)</b>	<b>(712)</b>

Rounding of figures may result in computational discrepancies.

## Group cash flow statement

	Quarter ended June 2005	Quarter ended March 2005	Quarter ended June 2004 Restated	Six months ended June 2005	Six months ended June 2004 Restated
US Dollar million	Unaudited	Unaudited	Unaudited	Unaudited	Unaudited
<b>Cash flows from operating activities</b>					
Cash generated from operations	193	136	102	329	220
Cash utilised by discontinued operations	(11)	(8)	(1)	(19)	1
Environmental, rehabilitation and other expenditure	(3)	(2)	(2)	(5)	(5)
Taxation paid	(5)	(10)	(9)	(15)	(24)
<b>Net cash inflow from operating activities</b>	<b>175</b>	<b>116</b>	<b>90</b>	<b>290</b>	<b>192</b>
<b>Cash flows from investing activities</b>					
Capital expenditure	(167)	(144)	(153)	(311)	(237)
Proceeds from disposal of tangible assets	-	-	1	-	5
Investments acquired	(15)	-	-	(15)	-
Acquisition of subsidiary net of cash	-	-	(126)	-	(126)
Net loans (advanced) repaid	(5)	-	11	(5)	11
Utilised in hedge restructure	-	(69)	-	(69)	-
<b>Net cash outflow from investing activities</b>	<b>(186)</b>	<b>(213)</b>	<b>(267)</b>	<b>(399)</b>	<b>(347)</b>
<b>Cash flows from financing activities</b>					
Proceeds from issue of share capital	2	1	-	3	2
Share issue expenses	-	-	-	-	-
Proceeds from borrowings	43	458	22	501	1,019
Repayment of borrowings	(27)	(278)	(213)	(305)	(685)
Interest received	4	7	9	12	20
Finance costs	(10)	(37)	(12)	(47)	(38)
Dividends paid	(5)	(82)	(9)	(87)	(122)
<b>Net cash inflow (outflow) from financing activities</b>	<b>7</b>	<b>69</b>	<b>(203)</b>	<b>77</b>	<b>196</b>
<b>Net (decrease) increase in cash and cash equivalents</b>	<b>(4)</b>	<b>(28)</b>	<b>(380)</b>	<b>(32)</b>	<b>41</b>
Translation	(2)	(4)	1	(5)	9
Opening cash and cash equivalents	280	312	934	312	505
<b>Closing cash and cash equivalents</b>	<b>275</b>	<b>280</b>	<b>555</b>	<b>275</b>	<b>555</b>
<b>Cash generated from operations</b>					
Profit before taxation	107	26	44	132	87
Adjusted for:					
Non-cash movements	20	(5)	(5)	15	2
Movement on non-hedge derivatives	(38)	57	64	18	90
Deferred stripping costs	2	1	(6)	4	(17)
Amortisation of tangible assets	123	122	91	244	157
Amortisation of intangible assets	-	-	8	1	16
Impairment of tangible assets	7	-	-	7	-
Interest receivable	(6)	(9)	(12)	(15)	(26)
Profit on disposal of assets and subsidiaries	-	-	-	-	(4)
Finance costs and unwinding of decommissioning and restoration obligations	25	24	19	50	42
Fair value adjustment on option component of convertible bond	(13)	(19)	(61)	(32)	(39)
Movement in working capital	(33)	(61)	(40)	(94)	(88)
	<b>193</b>	<b>136</b>	<b>102</b>	<b>329</b>	<b>220</b>
<b>Movement in working capital</b>					
Increase in inventories	(17)	(50)	(29)	(67)	(16)
(Increase) decrease in trade and other receivables	(20)	29	(29)	9	(52)
Increase (decrease) in trade and other payables	4	(40)	18	(36)	(20)
	<b>(33)</b>	<b>(61)</b>	<b>(40)</b>	<b>(94)</b>	<b>(88)</b>

Rounding of figures may result in computational discrepancies.

## Statement of recognised income and expense

for the six months ended 30 June 2005

	Six months ended June 2005 Unaudited	Six months ended June 2004 Unaudited
	<b>SA Rand million</b>	
Actuarial gains on defined benefit retirement plans	42	-
Net (gain) loss on cash flow hedges removed from equity and reported in income	(91)	446
Net (loss) gain on cash flow hedges	(116)	645
Net (loss) gain on available for sale financial assets	(2)	5
Deferred taxation on items above	182	(279)
Net exchange translation differences	(159)	91
Net (expense) income recognised directly in equity	(144)	908
Profit for the period	690	486
Total recognised income and expense for the period	546	1,394
Attributable to:		
Equity shareholders	429	1,329
Minority interest	117	65
	546	1,394
	<b>US Dollar million</b>	
Actuarial gains on defined benefit retirement plans	7	-
Net (gain) loss on cash flow hedges removed from equity and reported in income	(11)	78
Net (loss) gain on cash flow hedges	(17)	104
Net (loss) gain on available for sale financial assets	(2)	1
Deferred taxation on items above	26	(41)
Net exchange translation differences	(4)	(13)
Net (expense) income recognised directly in equity	(1)	129
Profit for the period	130	72
Total recognised income and expense for the period	129	201
Attributable to:		
Equity shareholders	120	187
Minority interest	9	14
	129	201

Rounding of figures may result in computational discrepancies.

## Group operating results

	Quarter	Quarter	Six months	Six months	Quarter	Quarter	Six months	Six months			
	ended	ended	ended	ended	ended	ended	ended	ended			
	June	March	June	June	June	March	June	June			
	2005	2005	2005	2004	2005	2005	2005	2004			
	Restated		Restated		Restated		Restated				
	Unaudited	Unaudited	Unaudited	Unaudited	Unaudited	Unaudited	Unaudited	Unaudited			
	Rand / Metric				Dollar / Imperial						
<b>OPERATING RESULTS</b>											
<b>UNDERGROUND OPERATION</b>											
Milled	- 000 tonnes	/	- 000 tons	<b>3,466</b>	3,386	6,853	6,277	<b>3,821</b>	3,733	7,554	6,919
Yield	- g / t	/	- oz / t	<b>7.26</b>	7.35	7.30	7.74	<b>0.212</b>	0.214	0.213	0.226
Gold produced	- kg	/	- oz (000)	<b>25,175</b>	24,884	50,059	48,565	<b>809</b>	800	1,609	1,562
<b>SURFACE AND DUMP RECLAMATION</b>											
Treated	- 000 tonnes	/	- 000 tons	<b>1,886</b>	2,111	3,997	3,400	<b>2,078</b>	2,327	4,406	3,747
Yield	- g / t	/	- oz / t	<b>0.49</b>	0.47	0.48	0.57	<b>0.014</b>	0.014	0.014	0.017
Gold produced	- kg	/	- oz (000)	<b>927</b>	986	1,913	1,925	<b>30</b>	32	62	62
<b>OPEN-PIT OPERATION</b>											
Mined	- 000 tonnes	/	- 000 tons	<b>46,042</b>	38,217	84,259	62,576	<b>50,753</b>	42,127	92,880	68,978
Treated	- 000 tonnes	/	- 000 tons	<b>6,501</b>	5,057	11,557	7,598	<b>7,166</b>	5,574	12,740	8,375
Stripping ratio	- t (mined total - mined ore) / t mined ore			<b>4.82</b>	6.10	5.34	7.31	<b>4.82</b>	6.10	5.34	7.31
Yield	- g / t	/	- oz / t	<b>2.90</b>	3.60	3.21	3.10	<b>0.085</b>	0.105	0.094	0.090
Gold in ore	- kg	/	- oz (000)	<b>11,188</b>	14,898	26,086	17,307	<b>360</b>	479	839	556
Gold produced	- kg	/	- oz (000)	<b>18,856</b>	18,220	37,076	23,573	<b>606</b>	585	1,192	758
<b>HEAP LEACH OPERATION</b>											
Mined	- 000 tonnes	/	- 000 tons	<b>14,465</b>	17,913	32,377	35,170	<b>15,945</b>	19,745	35,690	38,769
Placed <sup>1</sup>	- 000 tonnes	/	- 000 tons	<b>5,241</b>	6,610	11,851	10,382	<b>5,777</b>	7,286	13,063	11,445
Stripping ratio	- t (mined total - mined ore) / t mined ore			<b>2.33</b>	1.72	1.96	2.33	<b>2.33</b>	1.72	1.96	2.33
Yield <sup>2</sup>	- g / t	/	- oz / t	<b>0.77</b>	0.87	0.83	0.84	<b>0.023</b>	0.025	0.024	0.025
Gold placed <sup>3</sup>	- kg	/	- oz (000)	<b>4,046</b>	5,776	9,822	8,726	<b>130</b>	186	316	281
Gold produced	- kg	/	- oz (000)	<b>3,835</b>	4,718	8,553	6,910	<b>123</b>	152	275	222
<b>TOTAL</b>											
Gold produced	- kg	/	- oz (000)	<b>48,792</b>	48,808	97,600	80,972	<b>1,569</b>	1,569	3,138	2,603
Gold sold	- kg	/	- oz (000)	<b>48,560</b>	48,313	96,873	80,256	<b>1,561</b>	1,553	3,115	2,580
Price received	- R / kg	/	- \$ / oz - sold	<b>87,314</b>	82,152	84,739	84,152	<b>422</b>	424	423	393
Total cash costs	- R / kg	/	- \$ / oz - produced	<b>57,351</b>	54,778	56,064	54,456	<b>278</b>	284	281	254
Total production costs	- R / kg	/	- \$ / oz - produced	<b>74,728</b>	70,639	72,683	67,924	<b>363</b>	366	364	317
<b>PRODUCTIVITY PER EMPLOYEE</b>											
Target	- g	/	- oz	<b>431</b>	419	425	362	<b>13.86</b>	13.47	13.66	11.64
Actual	- g	/	- oz	<b>382</b>	394	388	351	<b>12.28</b>	12.66	12.47	11.28
<b>CAPITAL EXPENDITURE</b>											
	- Rm		- \$m	<b>1,068</b>	864	1,932	1,579	<b>167</b>	144	311	237

<sup>1</sup> Tonnes (Tons) placed on to leach pad.

<sup>2</sup> Gold placed / tonnes (tons) placed.

<sup>3</sup> Gold placed into leach pad inventory.

Rounding of figures may result in computational discrepancies.

# Notes

for the quarter and six months ended 30 June 2005

## 1. Basis of preparation

The financial statements have been prepared in accordance with the historic cost convention except for certain financial instruments which are stated at fair value. The group's accounting policies used in the preparation of these financial statements are consistent with those used in the annual financial statements for the year ended 31 December 2004 except for the new and revised International Financial Reporting Standards (IFRS) statements which are effective 1 January 2005, where applicable.

The option to account for actuarial gains and losses through equity reserves under IAS19 revised has been adopted. The financial effects of the adoption on prior periods are disclosed in Note 13.

The financial statements of AngloGold Ashanti have been prepared in compliance with IAS34, in compliance with the JSE Listings Requirements and in the manner required by the South African Companies Act, 1973 for the preparation of financial information of the group for the quarter and six months ended 30 June 2005.

Where the preparation or classification of an item has been amended, comparative information has been reclassified to ensure comparability with the current period. The amendments have been made to provide the users of the financial statements with additional information. Refer to Note 7, discontinued operations, Note 13, financial effects of IAS19 revised and Note 19, convertible bonds.

## 2. Cost of sales

	Quarter ended		Six months ended		Quarter ended		Six months ended	
	Jun	Mar	Jun	Jun	Jun	Mar	Jun	Jun
	2005	2005	2005	2004	2005	2005	2005	2004
	Unaudited	Unaudited	Unaudited	Restated Unaudited	Unaudited	Unaudited	Unaudited	Restated Unaudited
	SA Rand million				US Dollar million			
Cash operating costs	2,744	2,650	5,395	4,279	428	441	870	642
Other cash costs	92	100	192	137	14	17	31	21
Total cash costs	2,836	2,750	5,587	4,416	443	458	901	663
Retrenchment costs	31	14	46	30	5	2	7	5
Rehabilitation & other non-cash costs	49	45	94	57	8	7	15	9
Production costs	2,916	2,809	5,727	4,503	456	467	923	677
Amortisation of tangible assets	787	732	1,519	1,046	123	122	244	157
Amortisation of intangible assets	3	3	6	–	–	–	1	–
Total production costs	3,706	3,544	7,252	5,549	578	590	1,168	833
Inventory change	(86)	(129)	(216)	(211)	(14)	(21)	(35)	(33)
	3,620	3,415	7,036	5,338	565	568	1,133	801

## 3. Taxation

	Quarter ended		Six months ended		Quarter ended		Six months ended	
	Jun	Mar	Jun	Jun	Jun	Mar	Jun	Jun
	2005	2005	2005	2004	2005	2005	2005	2004
	Unaudited	Unaudited	Unaudited	Restated Unaudited	Unaudited	Unaudited	Unaudited	Restated Unaudited
	SA Rand million				US Dollar million			
Current taxation	11	(38)	(27)	(134)	1	(6)	(5)	(20)
Deferred taxation	(158)	(34)	(191)	(159)	(22)	(6)	(28)	(24)
Deferred taxation on change in tax rate	314	72	386	–	47	12	59	–
Deferred taxation on unrealised non-hedge derivatives	(105)	59	(47)	229	(16)	9	(7)	37
	62	59	121	(64)	9	9	18	(7)

*Rounding of figures may result in computational discrepancies*

#### 4. Headline earnings and headline earnings adjusted for the effect of unrealised non-hedge derivatives

	Quarter ended				Six months ended				Quarter ended				Six months ended			
	Jun		Mar		Jun		Jun		Jun		Mar		Jun		Jun	
	2005		2005		2005		2004		2005		2005		2005		2004	
	Unaudited		Unaudited		Unaudited		Restated Unaudited		Unaudited		Unaudited		Unaudited		Restated Unaudited	
	SA Rand million								US Dollar million							
Profit attributable to equity shareholders has been adjusted by the following to arrive at headline earnings:																
Profit attributable to equity shareholders	566	50	616	425	96	22	118	64	96	22	118	64	96	22	118	64
Amortisation of intangible assets	-	-	-	106	-	-	-	16	-	-	-	16	-	-	-	16
Impairment of tangible assets	45	-	45	-	7	-	7	-	7	-	7	-	7	-	7	-
Loss (profit) on disposal of assets and subsidiaries	-	1	1	(27)	-	-	-	(4)	-	-	-	(4)	-	-	-	(4)
Taxation on items above	(15)	-	(15)	7	(2)	-	(2)	1	(2)	-	(2)	1	(2)	-	(2)	1
Net loss from discontinued operations (note 7)	69	51	121	52	12	9	21	8	12	9	21	8	12	9	21	8
<b>Headline earnings</b>	<b>665</b>	<b>102</b>	<b>767</b>	<b>563</b>	<b>112</b>	<b>31</b>	<b>143</b>	<b>85</b>	<b>112</b>	<b>31</b>	<b>143</b>	<b>85</b>	<b>112</b>	<b>31</b>	<b>143</b>	<b>85</b>
Unrealised non-hedge derivatives	(166)	421	255	622	(37)	55	19	98	(37)	55	19	98	(37)	55	19	98
Deferred taxation on unrealised non-hedge derivatives (note 3)	105	(59)	47	(229)	16	(9)	7	(37)	16	(9)	7	(37)	16	(9)	7	(37)
<b>Headline earnings adjusted for the effect of unrealised non-hedge derivatives <sup>(2)</sup></b>	<b>604</b>	<b>464</b>	<b>1,069</b>	<b>956</b>	<b>92</b>	<b>77</b>	<b>169</b>	<b>147</b>	<b>92</b>	<b>77</b>	<b>169</b>	<b>147</b>	<b>92</b>	<b>77</b>	<b>169</b>	<b>147</b>
<b>Cents per share <sup>(1)</sup></b>																
Headline earnings	251	39	290	236	42	12	54	36	42	12	54	36	42	12	54	36
Headline earnings adjusted for the effect of unrealised non-hedge derivatives	228	175	404	401	35	29	64	62	35	29	64	62	35	29	64	62

<sup>(1)</sup> Calculated on the basic weighted average number of ordinary shares.

<sup>(2)</sup> Non-hedge derivatives in the income statement comprise the change in fair value of all non-hedge derivatives as follows:

- Open positions: The change in fair value from the previous reporting date or date of recognition (if later) through to the current reporting date; and
- Settled positions: The change in fair value from the previous reporting date or date of recognition (if later) through to the date of settlement.

Headline earnings adjusted for the effect of unrealised non-hedge derivatives, is intended to illustrate earnings after adjusting for:

- The unrealised fair value change in contracts that are still open at the reporting date, as well as, the unwinding of the historic marked-to-market value of the positions settled in the period; and
- Investment in hedge restructure transaction: During the hedge restructure of the quarter ended 31 December 2004 and the quarter ended 31 March 2005, \$83m and \$69m in cash was injected into the hedge book in these quarters to increase the value of long-dated contracts. The entire investment in short-dated derivatives (certain of which have now matured) and investment in long-dated derivatives (all of which have not yet matured), for the purposes of the adjustment to earnings, will only be taken into account when the realised portion of long-dated non-hedge derivatives are settled, and not when the short-term contracts are settled.

#### 5. Gross profit and gross profit adjusted for the effect of unrealised non-hedge derivatives

	Quarter ended				Six months ended				Quarter ended				Six months ended			
	Jun		Mar		Jun		Jun		Jun		Mar		Jun		Jun	
	2005		2005		2005		2004		2005		2005		2005		2004	
	Unaudited		Unaudited		Unaudited		Restated Unaudited		Unaudited		Unaudited		Unaudited		Restated Unaudited	
	SA Rand million								US Dollar million							
Reconciliation of gross profit to gross profit adjusted for the effect of unrealised non-hedge derivatives:																
Gross profit	931	255	1,186	971	154	57	211	142	154	57	211	142	154	57	211	142
Unrealised non-hedge derivatives	(166)	421	255	622	(37)	55	19	98	(37)	55	19	98	(37)	55	19	98
<b>Gross profit adjusted for the effect of unrealised non-hedge derivatives <sup>(1)</sup></b>	<b>765</b>	<b>676</b>	<b>1,441</b>	<b>1,593</b>	<b>117</b>	<b>112</b>	<b>230</b>	<b>240</b>	<b>117</b>	<b>112</b>	<b>230</b>	<b>240</b>	<b>117</b>	<b>112</b>	<b>230</b>	<b>240</b>

<sup>(1)</sup> Non-hedge derivatives in the income statement comprise the change in fair value of all non-hedge derivatives as follows:

- Open positions: The change in fair value from the previous reporting date or date of recognition (if later) through to the current reporting date; and
- Settled positions: The change in fair value from the previous reporting date or date of recognition (if later) through to the date of settlement.

Gross profit adjusted for the effect of unrealised non-hedge derivatives, is intended to illustrate earnings after adjusting for:

- The unrealised fair value change in contracts that are still open at the reporting date, as well as, the unwinding of the historic marked-to-market value of the positions settled in the period; and
- Investment in hedge restructure transaction: During the hedge restructure of the quarter ended 31 December 2004 and the quarter ended 31 March 2005, \$83m and \$69m in cash was injected into the hedge book in these quarters to increase the value of long-dated contracts. The entire investment in short-dated derivatives (certain of which have now matured) and investment in long-dated derivatives (all of which have not yet matured), for the purposes of the adjustment to earnings, will only be taken into account when the realised portion of long-dated non-hedge derivatives are settled, and not when the short-term contracts are settled.

Rounding of figures may result in computational discrepancies

## 6. Capital commitments

	Jun 2005	Mar 2005	Jun 2004	Dec 2004	Jun 2005	Mar 2005	Jun 2004	Dec 2004
	SA Rand million				US Dollar million			
Orders placed and outstanding on capital contracts at the prevailing rate of exchange	1,312	1,108	885	835	196	178	142	148

## 7. Discontinued operations

The Ergo surface dump reclamation, which forms part of the South African operations has been discontinued as the operation has reached the end of its useful life. The results of Ergo for the period are presented below:

	Quarter ended		Six months ended		Quarter ended		Six months ended	
	Jun 2005	Mar 2005	Jun 2005	Jun 2004	Jun 2005	Mar 2005	Jun 2005	Jun 2004
	SA Rand million				US Dollar million			
	Unaudited	Unaudited	Unaudited	Restated Unaudited	Unaudited	Unaudited	Unaudited	Restated Unaudited
Gold income	10	85	95	309	2	14	16	46
Retrenchment, rehabilitation and other costs	(261)	(136)	(398)	(334)	(41)	(23)	(64)	(50)
Non-hedge derivatives	–	–	–	(28)	–	–	–	(4)
Gross loss	(251)	(51)	(303)	(53)	(39)	(9)	(48)	(8)
Impairment loss reversed	115	–	115	–	17	–	17	–
Loss before taxation from discontinued operations	(136)	(51)	(188)	(53)	(22)	(9)	(31)	(8)
Deferred taxation	67	–	67	1	10	–	10	–
Net loss attributable to discontinued operations	(69)	(51)	(121)	(52)	(12)	(9)	(21)	(8)

## 8. Shares

	Quarter ended			Six months ended	
	Jun 2005	Mar 2005	Jun 2004	Jun 2005	Jun 2004
Authorised shares:					
Ordinary shares of 25 SA cents each	400,000,000	400,000,000	400,000,000	400,000,000	400,000,000
A redeemable preference shares of 50 SA cents each	2,000,000	2,000,000	2,000,000	2,000,000	2,000,000
B redeemable preference shares of 1 SA cent each	5,000,000	5,000,000	5,000,000	5,000,000	5,000,000
Issued shares:					
Ordinary shares of 25 SA cents each	264,611,494	264,527,794	264,403,394	264,611,494	264,403,394
A redeemable preference shares	2,000,000	2,000,000	2,000,000	2,000,000	2,000,000
B redeemable preference shares	778,896	778,896	778,896	778,896	778,896
Weighted average number of ordinary shares for the period					
Basic ordinary shares	264,556,116	264,488,624	253,046,275	264,522,557	238,129,583
Diluted number of ordinary shares	265,101,415	265,024,329	268,430,890	265,069,987	248,695,939

During the quarter, 83,700 ordinary shares were allotted in terms of the AngloGold Share Incentive Scheme. All the preference shares are held by a wholly-owned subsidiary company.

## 9. Ordinary share capital and premium

	As at		As at	
	Jun 2005	Jun 2004	Jun 2005	Jun 2004
	Unaudited		Unaudited	
	SA Rand million		US Dollar million	
Balance at December	18,987	9,668	3,364	1,450
Ordinary shares issued	19	9,312	3	1,368
Translation	–	–	(524)	230
<b>Balance at June</b>	<b>19,006</b>	<b>18,980</b>	<b>2,843</b>	<b>3,048</b>

*Rounding of figures may result in computational discrepancies*

## 10. Retained earnings and other reserves

	Retained earnings	Non-distributable reserves	Foreign currency translation reserve	Other Comprehensive income	Total
<b>SA Rand million</b>					
Balance at December 2003 as previously reported	3,848	138	(755)	(2,047)	1,184
Change in accounting policy for defined benefit retirement plans	–	–	–	(112)	(112)
As restated	3,848	138	(755)	(2,159)	1,072
Net loss on cash flow hedges removed from equity and reported in income	–	–	–	444	444
Net gain on cash flow hedges	–	–	–	642	642
Deferred taxation on cash flow hedges	–	–	–	(279)	(279)
Net gain on available for sale financial assets	–	–	–	5	5
Exchange translation differences	–	–	(1,583)	92	(1,491)
Profit attributable to equity shareholders	425	–	–	–	425
Dividends paid	(748)	–	–	–	(748)
<b>Balance at June 2004 (restated)</b>	<b>3,525</b>	<b>138</b>	<b>(2,338)</b>	<b>(1,255)</b>	<b>70</b>
Balance at December 2004 (restated)	3,379	138	(3,552)	(1,040)	(1,075)
Change in accounting policy for defined benefit retirement plans	–	–	–	(125)	(125)
As restated	3,379	138	(3,552)	(1,165)	(1,200)
Actuarial gain on defined benefit retirement plans	–	–	–	42	42
Deferred taxation on defined benefit retirement plans	–	–	–	(14)	(14)
Net gain on cash flow hedges removed from equity and reported in income	–	–	–	(93)	(93)
Net loss on cash flow hedges	–	–	–	(116)	(116)
Deferred taxation on cash flow hedges	–	–	–	196	196
Net loss on available for sale financial assets	–	–	–	(2)	(2)
Exchange translation differences	–	–	2,656	(199)	2,455
Profit attributable to equity shareholders	616	–	–	–	616
Dividends paid	(476)	–	–	–	(476)
<b>Balance at June 2005</b>	<b>3,519</b>	<b>138</b>	<b>(896)</b>	<b>(1,351)</b>	<b>1,410</b>
<b>US Dollar million <sup>(1)</sup></b>					
Balance at December 2003 as previously reported	356	21	108	(307)	178
Change in accounting policy for defined benefit retirement plans	–	–	–	(18)	(18)
As restated	356	21	108	(325)	160
Net loss on cash flow hedges removed from equity and reported in income	–	–	–	78	78
Net gain on cash flow hedges	–	–	–	103	103
Deferred taxation on cash flow hedges	–	–	–	(41)	(41)
Net gain on available for sale financial assets	–	–	–	1	1
Exchange translation differences	–	1	(225)	(18)	(242)
Profit attributable to equity shareholders	64	–	–	–	64
Dividends paid	(111)	–	–	–	(111)
<b>Balance at June 2004 (restated)</b>	<b>309</b>	<b>22</b>	<b>(117)</b>	<b>(202)</b>	<b>12</b>
Balance at December 2004 (restated)	286	24	(317)	(184)	(191)
Change in accounting policy for defined benefit retirement plans	–	–	–	(22)	(22)
As restated	286	24	(317)	(206)	(213)
Actuarial gain on defined benefit retirement plans	–	–	–	7	7
Deferred taxation on defined benefit retirement plans	–	–	–	(2)	(2)
Net gain on cash flow hedges removed from equity and reported in income	–	–	–	(11)	(11)
Net loss on cash flow hedges	–	–	–	(17)	(17)
Deferred taxation on cash flow hedges	–	–	–	28	28
Net loss on available for sale financial assets	–	–	–	(2)	(2)
Exchange translation differences	–	(3)	385	1	383
Profit attributable to equity shareholders	118	–	–	–	118
Dividends paid	(80)	–	–	–	(80)
<b>Balance at June 2005</b>	<b>324</b>	<b>21</b>	<b>68</b>	<b>(202)</b>	<b>211</b>

(1) The 2004 opening balances and comparative amounts have been restated in terms of IAS21 revised.

Rounding of figures may result in computational discrepancies

### 11. Minority interests

	As at Jun 2005 Unaudited SA Rand million	As at Jun 2004 Unaudited	As at Jun 2005 Unaudited US Dollar million	As at Jun 2004 Unaudited
Balance at December	327	354	58	53
Attributable profit	74	61	12	8
Dividends paid	(43)	(69)	(7)	(11)
Net loss on cash flow hedges removed from equity and reported in income	2	2	–	–
Net loss on cash flow hedges	–	3	–	1
Exchange translation differences	41	(1)	(3)	5
<b>Balance at June</b>	<b>401</b>	<b>350</b>	<b>60</b>	<b>56</b>

### 12. Exchange rates

	Jun 2005	Mar 2005	Jun 2004	Dec 2004
Rand/US dollar average for the period	6.21	6.01	6.67	6.44
Rand/US dollar average for the quarter	6.41	6.01	6.59	6.05
Rand/US dollar closing	6.68	6.22	6.23	5.65
Rand/Australian dollar average for the period	4.80	4.67	4.94	4.82
Rand/Australian dollar average for the quarter	4.93	4.67	4.70	4.58
Rand/Australian dollar closing	5.06	4.81	4.33	4.42

### 13. Financial effects of IAS19 revised

The cumulative effect of accounting for actuarial gains and losses through equity reserves for the previous reported periods are as follows:

	SA Rand million			US Dollar million		
	As at Mar 2005 Unaudited	As at Jun 2004 Unaudited	As at Dec 2004 Audited	As at Mar 2005 Unaudited	As at Jun 2004 Unaudited	As at Dec 2004 Audited
<b>Non-current assets</b>						
<b>Other non-current assets</b>						
As previously reported	637	520	601	102	83	106
Actuarial gain related to the pension plan asset recognised directly in equity	(113)	(169)	(114)	(20)	(25)	(16)
Translation	–	–	–	2	(2)	(4)
<b>As restated</b>	<b>524</b>	<b>351</b>	<b>487</b>	<b>84</b>	<b>56</b>	<b>86</b>
<b>Non-current liabilities</b>						
<b>Provisions</b>						
As previously reported	2,473	2,117	2,265	397	340	402
Actuarial gain related to the post retirement medical liability recognised directly in equity	74	–	74	13	–	11
Translation	1	–	–	(1)	–	2
<b>As restated</b>	<b>2,548</b>	<b>2,117</b>	<b>2,339</b>	<b>409</b>	<b>340</b>	<b>415</b>
<b>Non-current liabilities</b>						
<b>Deferred taxation</b>						
As previously reported	7,948	8,268	7,605	1,277	1,328	1,347
Actuarial gain related to the retirement plans recognised directly in equity	(63)	(57)	(63)	(11)	(9)	(9)
Translation	–	–	–	1	–	(2)
<b>As restated</b>	<b>7,885</b>	<b>8,211</b>	<b>7,542</b>	<b>1,267</b>	<b>1,319</b>	<b>1,336</b>

The financial effects of the IAS19 revised option for the current quarter relating to the pension plan asset and the post-retirement medical liability as well as the effects on the equity reserves for the current and the prior periods are disclosed in the Statement of recognised income and expense.

*Rounding if figures may result in computational discrepancies*

#### 14. Contingent liabilities

AngloGold Ashanti acts as ultimate guarantor in respect of sureties provided to bankers and other parties by its subsidiaries in respect of certain loans and commitments. At 30 June 2005, the aggregate contingent liability is approximately \$88m. Discussions are continuing in respect of the class action being brought against the former Ashanti Goldfields and it is anticipated that the final outcome of this claim will have no material effect on the company.

#### 15. Attributable interest

Although AngloGold Ashanti holds a 66.7% interest in Cripple Creek & Victor Gold Mining Company Limited, it is currently entitled to receive 100% of the cash flows from the operation until the loan, extended to the joint venture by AngloGold Ashanti USA Inc., is repaid.

#### 16. Announcements

- 16.1 On 15 April 2005, the South African Department of Water Affairs and Forestry issued a directive ordering three mining groups, DRDGold, Harmony and AngloGold Ashanti to share equally the costs of pumping water at some shafts of DRDGold's North West operations in South Africa. This follows an interdict application made by AngloGold Ashanti in response to DRDGold's threat to cease funding the pumping of water at these shafts, after placing Buffelsfontein, its subsidiary that operated the North West operations, into liquidation on 22 March 2005. The aggregate monthly cost of pumping is estimated at R8m (\$1m).
- 16.2 On 28 April 2005, the company announced that agreement had been reached with Trans-Siberian Gold plc (TSG) on revised terms for the second subscription of shares in TSG, and a revised subscription price of £1.30 per share, compared to £1.494 per share agreed between the parties on 30 June 2004. The revised terms of the subscription were approved by TSG shareholders on 27 May 2005 and AngloGold Ashanti's 17.5 percent equity interest in TSG increased to 29.9 percent on 31 May 2005, the date on which the second subscription was completed.
- 16.3 On 29 April 2005, AngloGold Ashanti announced the conditional sale of exploration assets in the Laverton area in Australia, comprising the Sickie royalty of \$30 per ounce, the Child Harold prospect, various 100 percent AngloGold Ashanti Australia-owned interests including the Lord Byron and Fish projects as well as its interests in the Jubilee, Black Swan and Jasper Hills Joint Ventures to Crescent Gold Limited, for a total consideration of A\$4m (\$3m). A\$0.3m (\$0.2m) was payable on the execution of a binding sale and purchase agreement, A\$1m (\$0.8m) is payable in Crescent Gold shares and A\$3m (\$2m) is payable in cash, on or before 15 December 2006.
- 16.4 On 17 March 2005, it was announced that with effect from 1 May 2005, Mr R Carvalho Silva and Mr N F Nicolau would be appointed executive directors to the board of AngloGold Ashanti. At the same time, Mr J G Best indicated that he would be retiring from the board and that Mr S Venkatakrishnan would be appointed to the board with effect from 1 August 2005.
- 16.5 On 21 June 2005, Dr S E Jonah indicated that he wished to move to a non-executive role on the board of AngloGold Ashanti, with effect from 31 July 2005. He will retain the title of President.
- 16.6 On 19 July 2005, Alease Gold and Uranium Resources Limited (Alease) announced that it had purchased from AngloGold Ashanti, its Weltevreden mine in an all script deal valued at R75m (\$11m). On finalisation of the transaction AngloGold Ashanti will hold in excess of 5% of Alease shares.
- 16.7 On 27 July 2005, the board approved the appointment of Mr Réne Médori, as a non-executive director with effect from 1 August 2005, in place of Mr Tony Lea, who retires from the board with effect from 31 July 2005. Mr Medori has nominated Mr Peter Whitcutt as his alternate.
- 16.8 On 27 July 2005 AngloGold Ashanti reached an agreement with the Government of Guinea to amend the Convention de Base (stability agreement) and resolve all outstanding disputes for a sum of \$7m. In addition, the company has agreed as part of this settlement to meet historical and follow-up fees and costs of a consultant that the Government retained to advise and assist it in its negotiations and resolution of the dispute. In consideration of the above settlement, the Government has irrevocably confirmed its waiver and abandonment of all claims and disputes of any nature whatsoever against the AngloGold Ashanti group of companies.

## 17. Dividend

The directors have today declared Interim Dividend No. 98 of 170 (Interim Dividend No. 96: 170) South African cents per ordinary share for the six months ended 30 June 2005. In compliance with the requirements of STRATE, given the company's primary listing on the JSE Limited (formerly JSE Securities Exchange South Africa), the salient dates for payment of the dividend are as follows:

### To holders of ordinary shares and to holders of CHESS Depositary Interests (CDIs)

Each CDI represents one-fifth of an ordinary share.

<b>2005</b>	
Currency conversion date for UK pounds, Australian dollars and Ghanaian cedis	Thursday, 4 August
Last date to trade ordinary shares cum dividend	Friday, 12 August
Last date to register transfers of certificated securities cum dividend	Friday, 12 August
Ordinary shares trade ex dividend	Monday, 15 August
Record date	Friday, 19 August
Payment date	Friday, 26 August

On the payment date, dividends due to holders of certificated securities on the South African share register will either be electronically transferred to shareholders' bank accounts or, in the absence of suitable mandates, dividend cheques will be posted to such shareholders.

Dividends in respect of dematerialised shareholdings will be credited to shareholders' accounts with the relevant CSDP or broker.

To comply with the further requirements of STRATE, between Monday, 15 August 2005 and Friday, 19 August 2005, both days inclusive, no transfers between the South African, United Kingdom, Australian and Ghana share registers will be permitted and no ordinary shares pertaining to the South African share register may be dematerialised or rematerialised.

### To holders of American Depositary Shares

Each American Depositary Share (ADS) represents one ordinary share.

<b>2005</b>	
Ex dividend on New York Stock Exchange	Wednesday, 17 August
Record date	Friday, 19 August
Approximate date for currency conversion	Friday, 26 August
Approximate payment date of dividend	Monday, 5 September

Assuming an exchange rate of R6.69/\$1, the dividend payable on an ADS is equivalent to 25.41 US cents. This compares with the interim dividend of 25.62 US cents per ADS paid on 7 September 2004. However, the actual rate of payment will depend on the exchange rate on the date for currency conversion.

### To holders of Ghanaian Depositary Shares (GhDSs)

100 GhDSs represent one ordinary share.

<b>2005</b>	
Last date to trade and to register GhDSs cum dividend	Friday, 12 August
GhDSs trade ex dividend	Monday, 15 August
Record date	Friday, 19 August
Approximate payment date of dividend	Monday, 29 August

Assuming an exchange rate of R1/¢1,349 the dividend payable per GhDS is equivalent to 22.93 cedis. This compares with the interim dividend of 24.848 cedis per GhDS paid on 30 August 2004. However, the actual rate of payment will depend on the exchange rate on the date for currency conversion. In Ghana, the authorities have determined that dividends payable to residents on the Ghana share register be subject to a final withholding tax at a rate of 10%, similar to the rate applicable to dividend payments made by resident companies which is currently at 10%.

## 18. Group financial statements

The group financial statements for the quarter and six months ended 30 June 2005 were authorised for issue in accordance with a resolution of the directors passed on 27 July 2005. AngloGold Ashanti is a limited liability company incorporated in the Republic of South Africa.

## 19. Convertible bonds

The group changed its accounting policy for convertible bonds during the first quarter of 2005. Previously, convertible bonds were accounted for as compound financial instruments, part equity and part liability. The equity component was not re-measured for changes in fair value.

Convertible bonds are now accounted for entirely as a liability, with the option component disclosed as a derivative liability, carried at fair value. Changes in such fair value are recorded in the income statement.

This change was made in response to additional guidance becoming available on the interpretation of International Financial Reporting Standards. This change is applied retrospectively and comparative figures have been restated.

The impact on comparative figures is as follows:

### *Quarter to 30 June 2004:*

Profit attributable to equity shareholders increased by \$61m;  
Option component previously disclosed as equity (\$82m) is removed from shareholders equity, and replaced by a derivative liability of \$43m.

### *Six months ended 30 June 2004:*

Profit attributable to equity shareholders increased by \$39m;  
Option component previously disclosed as equity (\$82m) is removed from shareholders equity, and replaced by a derivative liability of \$43m.

## 20. Borrowings

AngloGold Ashanti's borrowings are interest bearing.

By order of the Board

**R P EDEY**  
Chairman

**R M GODSELL**  
Chief Executive Officer

27 July 2005

## Segmental reporting

for the quarter and six months ended June 2005

Based on risks and returns the directors consider that the primary reporting format is by business segment. The directors consider that there is only one business segment being mining, extraction and production of gold. Therefore the disclosures for the primary segment have already been given in the abbreviated financial statements. The secondary reporting format is by geographical analysis by origin.

	Quarter ended June 2005	Quarter ended March 2005	Quarter ended June 2004	Six months ended June 2005	Six months ended June 2004	Quarter ended June 2005	Quarter ended March 2005	Quarter ended June 2004	Six months ended June 2005	Six months ended June 2004
	Unaudited	Unaudited	Restated Unaudited	Unaudited	Restated Unaudited	Unaudited	Unaudited	Restated Unaudited	Unaudited	Unaudited
	SA Rand million					US Dollar million				
<b>Gold income</b>										
South Africa	1,953	1,646	1,758	3,600	3,594	303	274	267	577	538
Argentina	142	151	129	293	244	22	25	20	47	37
Australia	413	337	273	750	520	64	56	41	120	78
Brazil	270	247	258	517	508	42	41	39	83	76
Ghana	454	410	353	863	353	71	68	53	139	53
Guinea	229	119	-	347	-	36	20	-	55	-
Mali	358	333	267	691	543	55	55	42	111	82
Namibia	49	53	45	102	85	8	9	7	16	13
Tanzania	381	407	299	788	515	59	68	45	127	77
USA	155	155	167	310	320	24	26	25	50	48
Zimbabwe	-	-	11	-	11	-	-	2	-	2
	<b>4,404</b>	<b>3,858</b>	<b>3,559</b>	<b>8,261</b>	<b>6,693</b>	<b>684</b>	<b>642</b>	<b>541</b>	<b>1,326</b>	<b>1,005</b>
<b>Gross profit (loss) adjusted for the effect of unrealised non-hedge derivatives</b>										
South Africa	336	213	319	549	817	52	35	48	88	123
Argentina	44	60	14	105	38	7	10	3	17	6
Australia	131	80	117	211	186	21	13	17	34	28
Brazil	137	136	157	272	275	21	23	23	44	41
Ghana	(21)	8	-	(13)	-	(3)	1	-	(2)	-
Guinea	71	15	(16)	86	(16)	11	2	(2)	13	(2)
Mali	104	97	48	201	131	16	16	8	32	20
Namibia	(6)	1	5	(5)	13	(1)	-	1	(1)	2
Tanzania	(56)	65	45	7	118	(9)	10	7	2	18
USA	16	41	27	57	34	2	7	4	9	5
Zimbabwe	-	-	(4)	-	(4)	-	-	(1)	-	(1)
Other	9	(40)	4	(29)	1	-	(5)	1	(6)	-
	<b>765</b>	<b>676</b>	<b>716</b>	<b>1,441</b>	<b>1,593</b>	<b>117</b>	<b>112</b>	<b>109</b>	<b>230</b>	<b>240</b>
<b>Cash gross profit (loss)<sup>1</sup></b>										
South Africa	585	455	498	1,041	1,157	91	76	75	166	174
Argentina	81	96	59	177	123	13	16	10	29	19
Australia	189	135	149	324	261	30	22	23	52	39
Brazil	172	164	192	337	345	27	27	29	54	52
Ghana	86	106	52	192	53	13	18	7	31	8
Guinea	107	27	(16)	133	(16)	16	4	(3)	21	(3)
Mali	170	165	95	336	227	26	27	14	53	34
Namibia	(1)	6	10	6	19	-	1	2	1	3
Tanzania	23	154	89	176	189	3	25	14	29	28
USA	79	98	85	177	168	12	16	13	28	25
Zimbabwe	-	-	(2)	-	(2)	-	-	-	-	(1)
Other	28	(21)	24	5	35	4	(2)	5	1	8
	<b>1,519</b>	<b>1,385</b>	<b>1,235</b>	<b>2,904</b>	<b>2,559</b>	<b>235</b>	<b>230</b>	<b>189</b>	<b>465</b>	<b>386</b>

<sup>1</sup> Gross profit (loss) adjusted for the effect of unrealised non-hedge derivatives plus amortisation of tangible and intangible assets, less non-cash revenues. Rounding of figures may result in computational discrepancies.

## Segmental reporting (continued)

	Quarter ended June 2005	Quarter ended March 2005	Quarter ended June 2004	Six months ended June 2005	Six months ended June 2004	Quarter ended June 2005	Quarter ended March 2005	Quarter ended June 2004	Six months ended June 2005	Six months ended June 2004
	Unaudited	Unaudited	Restated Unaudited	Unaudited	Restated Unaudited	Unaudited	Unaudited	Restated Unaudited	Unaudited	Unaudited
	<b>kg</b>					<b>oz (000)</b>				
<b>Gold production</b>										
South Africa	20,604	20,732	22,379	41,336	43,797	662	666	719	1,329	1,408
Argentina	1,591	1,779	1,449	3,370	2,546	51	57	47	108	82
Australia	4,063	4,064	3,008	8,127	5,711	131	131	97	261	184
Brazil	2,660	2,528	2,733	5,188	5,066	86	81	88	167	163
Ghana	5,341	5,313	3,821	10,654	3,820	172	171	123	343	123
Guinea	2,486	1,345	535	3,831	535	80	43	17	123	17
Mali	4,139	3,980	3,214	8,119	6,565	133	128	103	261	211
Namibia	560	596	503	1,156	963	18	19	16	37	31
Tanzania	5,133	5,963	4,339	11,097	7,234	165	192	140	357	233
USA	2,215	2,508	2,372	4,723	4,610	71	81	76	152	148
Zimbabwe	-	-	125	-	125	-	-	4	-	4
	<b>48,792</b>	<b>48,808</b>	<b>44,477</b>	<b>97,600</b>	<b>80,972</b>	<b>1,569</b>	<b>1,569</b>	<b>1,430</b>	<b>3,138</b>	<b>2,603</b>
	<b>SA Rand million</b>					<b>US Dollar million</b>				
<b>Capital expenditure</b>										
South Africa	527	482	510	1,008	926	82	80	77	162	139
Argentina	37	23	27	59	42	6	4	4	10	6
Australia	60	46	45	106	89	9	7	7	17	13
Brazil	132	64	83	195	127	21	11	12	31	19
Ghana	130	94	66	224	66	20	16	10	36	10
Guinea	67	95	111	161	111	10	16	17	26	17
Mali	18	24	18	41	35	3	4	4	7	6
Namibia	14	5	101	18	105	2	1	15	3	16
Tanzania	63	17	19	80	25	10	3	3	13	4
USA	14	9	18	23	34	2	2	3	4	5
Zimbabwe	-	-	2	-	2	-	-	-	-	-
Other	7	5	12	15	17	1	-	1	2	2
	<b>1,068</b>	<b>864</b>	<b>1,012</b>	<b>1,932</b>	<b>1,579</b>	<b>167</b>	<b>144</b>	<b>153</b>	<b>311</b>	<b>237</b>
	<b>SA Rand million</b>					<b>US Dollar million</b>				
	As at June 2005	As at March 2005	As at June 2004	As at December 2004		As at June 2005	As at March 2005	As at June 2004	As at December 2004	
	Unaudited	Unaudited	Unaudited	Audited		Unaudited	Unaudited	Unaudited	Audited	
<b>Total assets</b>										
South Africa	14,753	14,506	13,174	15,039		2,207	2,331	2,116	2,664	
Argentina	1,866	2,115	1,811	1,784		279	340	291	316	
Australia	4,665	4,389	3,898	4,062		698	705	626	719	
Brazil	2,392	2,048	1,825	1,962		358	329	293	348	
Ghana	12,102	11,403	10,997	10,016		1,811	1,832	1,766	1,774	
Guinea	1,817	1,699	1,167	1,366		272	273	187	242	
Mali	2,168	2,041	2,186	1,820		324	328	351	322	
Namibia	210	214	200	216		31	34	32	38	
Tanzania	7,109	6,682	6,960	6,233		1,064	1,073	1,118	1,104	
USA	2,946	2,752	2,564	2,311		441	442	412	409	
Other	2,305	1,649	3,261	1,306		345	268	524	233	
	<b>52,333</b>	<b>49,498</b>	<b>48,093</b>	<b>46,114</b>		<b>7,830</b>	<b>7,955</b>	<b>7,723</b>	<b>8,170</b>	

Rounding of figures may result in computational discrepancies.

## Price and unit cost calculation

	Quarter ended June 2005	Quarter ended March 2005	Six months ended June 2005	Six months ended June 2004	Quarter ended June 2005	Quarter ended March 2005	Six months ended June 2005	Six months ended June 2004
	Unaudited	Unaudited	Unaudited	Restated Unaudited	Unaudited	Unaudited	Unaudited	Restated Unaudited
	SA Rand / Metric				US Dollar / Imperial			
<b>Price received</b>								
Gold income per income statement	4,404	3,858	8,261	6,693	684	642	1,326	1,005
Adjusted for minority interests and non-gold producing companies	(146)	(122)	(267)	(176)	(24)	(21)	(46)	(26)
	4,258	3,736	7,994	6,517	660	621	1,280	978
Realised non-hedge derivatives	(18)	233	215	238	(2)	38	37	36
	4,240	3,969	8,209	6,754	658	659	1,317	1,015
Attributable gold sold - kg / - oz (000)	48,560	48,313	96,873	80,256	1,561	1,553	3,115	2,580
Revenue price per unit - R/kg / -\$/oz	87,314	82,152	84,739	84,152	422	424	423	393
<b>Total Costs</b>								
Total cash costs (note 2)	2,836	2,750	5,587	4,416	443	458	901	663
Adjusted for minority interests and non-gold producing companies	(38)	(76)	(115)	(7)	(6)	(13)	(19)	(2)
<b>Total cash costs</b>	2,798	2,674	5,472	4,409	437	445	882	661
Retrenchment costs (note 2)	31	14	46	30	5	2	7	5
Rehabilitation and other non-cash costs (note 2)	49	45	94	57	8	7	15	9
Amortisation of tangible assets (note 2)	787	732	1,519	1,046	123	122	244	157
Amortisation of intangible assets (note 2)	3	3	6	-	-	-	1	-
Adjusted for minority interests and non-gold producing companies	(22)	(20)	(43)	(42)	(4)	(2)	(6)	(7)
<b>Total production costs</b>	3,646	3,448	7,094	5,500	569	574	1,143	825
Gold produced - kg / - oz (000)	48,792	48,808	97,600	80,972	1,569	1,569	3,138	2,603
Total cash cost per unit - R/kg / -\$/oz	57,351	54,778	56,064	54,456	278	284	281	254
Total production cost per unit - R/kg / -\$/oz	74,728	70,639	72,683	67,924	363	366	364	317

Rounding of figures may result in computational discrepancies.

## Development

Development values represent actual results of sampling, no allowances having been made for adjustments necessary in estimating ore reserves.

Quarter ended June 2005

Statistics are shown in metric units	Advance metres	Sampled					
		metres	channel width cm	gold		uranium	
				g/t	cm.g/t	kg/t	cm.kg/t
<b>VAAL RIVER</b>							
<b>Great Noligwa Mine</b>							
Vaal reef	3,198	316	109.3	35.72	3,904	0.92	100.71
<b>Kopanang Mine</b>							
Vaal reef	6,743	822	11.9	118.15	1,406	1.33	15.80
<b>Tau Lekoa Mine</b>							
Ventersdorp Contact reef	3,219	1,028	100.1	10.28	1,029	0.01	0.97
<b>Moab Khotsong Mine</b>							
Vaal reef	4,570	188	114.9	21.75	2,499	1.40	161.00
<b>WEST WITS</b>							
<b>Tau Tona Mine</b>							
Ventersdorp Contact reef	486	-	-	-	-	-	-
Carbon Leader reef	4,154	-	-	-	-	-	-
<b>Savuka Mine</b>							
Ventersdorp Contact reef	580	-	-	-	-	-	-
Carbon Leader reef	350	70	56.9	14.31	814	-	-
<b>Mponeng Mine</b>							
Ventersdorp Contact reef	4,281	730	81.3	27.74	2,255	-	-
<b>AUSTRALIA</b>							
<b>Sunrise Dam</b>							
	1,674	516	-	3.17	-	-	-
<b>BRAZIL</b>							
<b>AngloGold Ashanti Mineração</b>							
Mina de Cuiabá	1,514	601	-	5.54	-	-	-
Córrego do Sítio	161	60	-	1.77	-	-	-
Lamego	385	-	-	-	-	-	-
<b>Serra Grande</b>							
Mina III	889	55	-	8.90	-	-	-
Mina Nova	90	-	-	-	-	-	-
<b>GHANA</b>							
<b>Obuasi</b>							
	6,486	1,409	-	10.67	-	-	-
Statistics are shown in imperial units	Advance feet	Sampled					
	feet	channel width inches	gold		uranium		
			oz/t	ft.oz/t	lb/t	ft.lb/t	
<b>VAAL RIVER</b>							
<b>Great Noligwa Mine</b>							
Vaal reef	10,492	1,037	43.03	1.04	3.73	1.84	6.60
<b>Kopanang Mine</b>							
Vaal reef	22,123	2,697	4.69	3.45	1.35	2.66	1.04
<b>Tau Lekoa Mine</b>							
Ventersdorp Contact reef	10,561	3,373	39.41	0.30	0.99	0.02	0.07
<b>Moab Khotsong Mine</b>							
Vaal reef	14,993	617	45.24	0.63	2.38	2.80	10.56
<b>WEST WITS</b>							
<b>Tau Tona Mine</b>							
Ventersdorp Contact reef	1,595	-	-	-	-	-	-
Carbon Leader reef	13,629	-	-	-	-	-	-
<b>Savuka Mine</b>							
Ventersdorp Contact reef	1,904	-	-	-	-	-	-
Carbon Leader reef	1,150	230	22.40	0.42	0.78	-	-
<b>Mponeng Mine</b>							
Ventersdorp Contact reef	14,045	2,395	32.01	0.81	2.16	-	-
<b>AUSTRALIA</b>							
<b>Sunrise Dam</b>							
	5,492	1,693	-	0.09	-	-	-
<b>BRAZIL</b>							
<b>AngloGold Ashanti Mineração</b>							
Mina de Cuiabá	4,967	1,972	-	0.16	-	-	-
Córrego do Sítio	528	197	-	0.05	-	-	-
Lamego	1,263	-	-	-	-	-	-
<b>Serra Grande</b>							
Mina III	2,917	180	-	0.26	-	-	-
Mina Nova	295	-	-	-	-	-	-
<b>GHANA</b>							
<b>Obuasi</b>							
	21,281	4,624	-	0.31	-	-	-

## Key operating results

### PER REGION & OPERATION

	Quarter	Quarter	Quarter	Six months	Quarter	Quarter	Quarter	Six months
	ended	ended	ended	ended	ended	ended	ended	ended
	June	March	June	June	June	March	June	June
	2005	2005	2004	2005	2005	2005	2004	2005
<b>SA Rand / US Dollar</b>	<b>Capital expenditure - Rm</b>				<b>Capital expenditure - \$m</b>			
<b>SOUTH AFRICA</b>	<b>527</b>	<b>482</b>	<b>510</b>	<b>1,008</b>	<b>82</b>	<b>80</b>	<b>77</b>	<b>162</b>
<b>Vaal River</b>								
Great Noligwa Mine	49	55	65	104	8	9	10	17
Kopanang Mine	60	64	61	124	9	11	9	20
Tau Lekoa Mine	19	31	40	49	3	5	6	8
Surface Operations	40	11	20	51	6	2	3	8
Moab Khotsong	152	137	110	289	24	23	17	47
<b>West Wits</b>								
Mponeng Mine	70	75	98	145	11	12	15	23
Savuka Mine	15	14	15	28	2	2	2	5
TauTona Mine	122	95	101	217	19	16	15	35
<b>ARGENTINA</b>	<b>37</b>	<b>23</b>	<b>27</b>	<b>59</b>	<b>6</b>	<b>4</b>	<b>4</b>	<b>10</b>
Cerro Vanguardia - Attributable 92.50%	34	21	25	55	5	3	4	9
Minorities and exploration	3	2	2	4	1	1	-	1
<b>AUSTRALIA</b>	<b>60</b>	<b>46</b>	<b>45</b>	<b>106</b>	<b>9</b>	<b>7</b>	<b>7</b>	<b>17</b>
Sunrise Dam	54	41	43	95	8	7	6	15
Exploration	6	5	2	11	1	-	1	2
<b>BRAZIL</b>	<b>132</b>	<b>64</b>	<b>83</b>	<b>195</b>	<b>21</b>	<b>11</b>	<b>12</b>	<b>31</b>
AngloGold Ashanti Mineração	111	45	55	157	18	8	8	25
Serra Grande - Attributable 50%	10	9	9	19	2	1	1	3
Minorities and exploration	10	10	19	19	1	2	3	3
<b>GHANA</b>	<b>130</b>	<b>94</b>	<b>66</b>	<b>224</b>	<b>20</b>	<b>16</b>	<b>10</b>	<b>36</b>
Bibiani	17	12	13	29	3	2	2	5
Iduapriem - Attributable 85%	5	2	3	7	1	-	1	1
Obuasi	105	77	48	182	17	13	7	29
Minorities and exploration	3	3	2	6	-	1	-	1
<b>GUINEA</b>	<b>67</b>	<b>95</b>	<b>111</b>	<b>161</b>	<b>10</b>	<b>16</b>	<b>17</b>	<b>26</b>
Siguirí - Attributable 85%	57	80	94	137	9	13	14	22
Minorities and exploration	10	15	17	24	1	3	3	4
<b>MALI</b>	<b>18</b>	<b>24</b>	<b>18</b>	<b>41</b>	<b>3</b>	<b>4</b>	<b>4</b>	<b>7</b>
Morila - Attributable 40%	-	4	1	3	-	1	1	1
Sadiola - Attributable 38%	13	14	12	27	2	2	2	4
Yatela - Attributable 40%	5	6	5	11	1	1	1	2
<b>NAMIBIA</b>	<b>14</b>	<b>5</b>	<b>101</b>	<b>18</b>	<b>2</b>	<b>1</b>	<b>15</b>	<b>3</b>
Navachab	14	5	101	18	2	1	15	3
<b>TANZANIA</b>	<b>63</b>	<b>17</b>	<b>19</b>	<b>80</b>	<b>10</b>	<b>3</b>	<b>3</b>	<b>13</b>
Geita - Attributable 100% May 2004	63	17	19	80	10	3	3	13
<b>USA</b>	<b>14</b>	<b>9</b>	<b>18</b>	<b>23</b>	<b>2</b>	<b>2</b>	<b>3</b>	<b>4</b>
Cripple Creek & Victor J.V.	14	9	18	23	2	2	3	4
Minorities and exploration	-	-	-	-	-	-	-	-
<b>ZIMBABWE</b>	<b>-</b>	<b>-</b>	<b>2</b>	<b>-</b>	<b>-</b>	<b>-</b>	<b>-</b>	<b>-</b>
Freda-Rebecca	-	-	2	-	-	-	-	-
<b>OTHER</b>	<b>7</b>	<b>5</b>	<b>12</b>	<b>15</b>	<b>1</b>	<b>-</b>	<b>1</b>	<b>2</b>
<b>ANGLOGOLD ASHANTI</b>	<b>1,068</b>	<b>864</b>	<b>1,012</b>	<b>1,932</b>	<b>167</b>	<b>144</b>	<b>153</b>	<b>311</b>

Rounding of figures may result in computational discrepancies.

## Key operating results

### PER REGION & OPERATION

Metric	Quarter	Quarter	Six months	Six months	Quarter	Quarter	Six months	Six months
	ended	ended	ended	ended	ended	ended	ended	ended
	June	March	June	June	June	March	June	June
	2005	2005	2005	2004	2005	2005	2005	2004
	<b>Yield - g/t</b>				<b>Gold produced - kg</b>			
<b>SOUTH AFRICA <sup>1</sup></b>					<b>20,604</b>	<b>20,732</b>	<b>41,336</b>	<b>43,797</b>
<b>Vaal River</b>								
Great Noligwa Mine	9.49	10.23	9.86	10.35	5,401	5,598	10,998	11,987
Kopanang Mine	6.95	7.49	7.21	7.67	3,659	3,737	7,396	7,571
Tau Lekoa Mine	4.18	3.98	4.08	3.91	2,126	2,029	4,154	4,604
Surface Operations	0.48	0.46	0.47	0.56	666	730	1,396	1,757
<b>West Wits</b>								
Mponeng Mine	9.50	8.31	8.89	8.11	3,968	3,571	7,539	6,500
Savuka Mine	5.93	5.44	5.68	5.90	1,038	1,000	2,038	2,261
TauTona Mine	9.45	10.31	9.88	11.49	3,747	4,067	7,814	9,117
<b>ARGENTINA</b>					<b>1,591</b>	<b>1,779</b>	<b>3,370</b>	<b>2,546</b>
Cerro Vanguardia - Attributable 92.50%	7.91	8.15	8.04	6.13	1,591	1,779	3,370	2,546
<b>AUSTRALIA</b>					<b>4,063</b>	<b>4,064</b>	<b>8,127</b>	<b>5,711</b>
Sunrise Dam	4.28	4.60	4.43	3.14	4,063	4,064	8,127	5,700
Union Reefs	-	-	-	-	-	-	-	11
<b>BRAZIL</b>					<b>2,660</b>	<b>2,528</b>	<b>5,188</b>	<b>5,066</b>
AngloGold Ashanti Mineração <sup>2</sup>	6.96	7.96	7.43	7.85	1,908	1,776	3,684	3,637
Serra Grande - Attributable 50%	8.04	8.01	8.02	7.76	751	752	1,504	1,429
<b>GHANA</b>					<b>5,341</b>	<b>5,313</b>	<b>10,654</b>	<b>3,820</b>
Bibiani <sup>3</sup>	1.51	1.58	1.55	1.78	931	1,020	1,951	788
Iduapriem <sup>3</sup> - Attributable 85%	1.72	1.80	1.76	1.48	1,244	1,442	2,686	838
Obuasi <sup>5</sup>	4.95	4.80	4.79	5.39	3,166	2,851	6,017	2,194
<b>GUINEA</b>					<b>2,486</b>	<b>1,345</b>	<b>3,831</b>	<b>535</b>
Siguiri <sup>3</sup> - Attributable 85%	1.35	-	1.35	-	2,486	1,345	3,831	535
<b>MALI</b>					<b>4,139</b>	<b>3,980</b>	<b>8,119</b>	<b>6,565</b>
Morila - Attributable 40%	5.51	6.05	5.77	3.60	2,095	2,075	4,171	2,390
Sadiola - Attributable 38%	3.02	2.65	2.83	2.97	1,339	1,188	2,527	2,771
Yatela <sup>4</sup> - Attributable 40%	2.51	2.61	2.56	3.60	705	717	1,421	1,404
<b>NAMIBIA</b>					<b>560</b>	<b>596</b>	<b>1,156</b>	<b>963</b>
Navachab	1.98	1.94	1.96	1.50	560	596	1,156	963
<b>TANZANIA</b>					<b>5,133</b>	<b>5,963</b>	<b>11,097</b>	<b>7,234</b>
Geita - Attributable 100% May 2004	3.34	4.15	3.73	3.66	5,133	5,963	11,097	7,234
<b>USA</b>					<b>2,215</b>	<b>2,508</b>	<b>4,723</b>	<b>4,610</b>
Cripple Creek & Victor J.V. <sup>4</sup>	0.62	0.64	0.63	0.63	2,215	2,508	4,723	4,610
<b>ZIMBABWE</b>					<b>-</b>	<b>-</b>	<b>-</b>	<b>125</b>
Freda-Rebecca	-	-	-	1.60	-	-	-	125
<b>ANGLOGOLD ASHANTI</b>					<b>48,792</b>	<b>48,808</b>	<b>97,600</b>	<b>80,972</b>
Underground Operations	7.26	7.35	7.30	7.74	25,175	24,884	50,059	48,565
Surface and Dump Reclamation	0.49	0.47	0.48	0.57	927	986	1,913	1,925
Open-pit Operations	2.90	3.60	3.21	3.10	18,856	18,220	37,076	23,573
Heap leach Operations <sup>1</sup>	0.77	0.87	0.83	0.84	3,835	4,718	8,553	6,910
					<b>48,792</b>	<b>48,808</b>	<b>97,600</b>	<b>80,972</b>

Attributable year to date production at Moab Khotsong yielded 354 kilograms which will be capitalised against pre-production costs.

<sup>1</sup> The yield is calculated on gold placed into leach pad inventory / tonnes placed on to leach pad.

<sup>2</sup> The yield of AngloGold Ashanti Mineração represents underground operations.

Rounding of figures may result in computational discrepancies.

<sup>3</sup> The yield of Bibiani, Siguiri and Iduapriem represents open-pit operations.

<sup>4</sup> Yatela and Cripple Creek & Victor Joint Venture operations yield reflects gold placed/tonnes placed.

<sup>5</sup> The yield of Obuasi represents underground operations.

## Key operating results

### PER REGION & OPERATION

Metric	Quarter ended	Quarter ended	Six months ended	Six months ended	Quarter ended	Quarter ended	Six months ended	Six months ended
	June	March	June	June	June	March	June	June
	2005	2005	2005	2004	2005	2005	2005	2004
	<b>Productivity per employee - g</b>				<b>Gold sold - kg</b>			
<b>SOUTH AFRICA</b>	<b>249</b>	<b>240</b>	<b>244</b>	<b>242</b>	<b>20,585</b>	<b>20,717</b>	<b>41,302</b>	<b>43,772</b>
<b>Vaal River</b>								
Great Noligwa Mine	263	272	268	271	5,399	5,595	10,995	11,981
Kopanang Mine	236	229	232	226	3,659	3,735	7,394	7,567
Tau Lekoa Mine	169	168	169	187	2,125	2,028	4,153	4,601
Surface Operations	730	678	702	871	666	730	1,396	1,756
<b>West Wits</b>								
Mponeng Mine	280	251	265	229	3,970	3,567	7,537	6,496
Savuka Mine	134	118	126	117	1,026	999	2,025	2,259
TauTona Mine	328	296	310	319	3,740	4,063	7,803	9,112
<b>ARGENTINA</b>	<b>911</b>	<b>815</b>	<b>858</b>	<b>722</b>	<b>1,540</b>	<b>1,743</b>	<b>3,283</b>	<b>2,653</b>
Cerro Vanguardia - Attributable 92.50%	911	815	858	722	1,540	1,743	3,283	2,653
<b>AUSTRALIA</b>	<b>3,149</b>	<b>3,378</b>	<b>3,259</b>	<b>2,277</b>	<b>4,067</b>	<b>4,053</b>	<b>8,120</b>	<b>5,717</b>
Sunrise Dam	3,558	3,812	3,681	2,676	4,067	4,053	8,120	5,705
Union Reefs	-	-	-	151	-	-	-	12
<b>BRAZIL</b>	<b>666</b>	<b>663</b>	<b>664</b>	<b>638</b>	<b>2,587</b>	<b>2,502</b>	<b>5,089</b>	<b>5,075</b>
AngloGold Ashanti Mineração	590	579	584	581	1,813	1,751	3,564	3,659
Serra Grande - Attributable 50%	992	1,007	999	850	774	751	1,526	1,416
<b>GHANA</b>	<b>281</b>	<b>272</b>	<b>277</b>	<b>303</b>	<b>5,389</b>	<b>5,120</b>	<b>10,510</b>	<b>3,800</b>
Bibiani	465	487	476	1,024	931	1,020	1,951	788
Iduapriem - Attributable 85%	584	681	633	609	1,263	1,279	2,542	845
Obuasi	213	186	199	210	3,196	2,821	6,018	2,167
<b>GUINEA</b>	<b>774</b>	<b>489</b>	<b>643</b>	<b>273</b>	<b>2,326</b>	<b>1,345</b>	<b>3,670</b>	<b>-</b>
Siguirí - Attributable 85%	774	489	643	273	2,326	1,345	3,670	-
<b>MALI</b>	<b>2,077</b>	<b>2,000</b>	<b>2,038</b>	<b>1,410</b>	<b>4,008</b>	<b>4,014</b>	<b>8,022</b>	<b>6,591</b>
Morila - Attributable 40%	3,742	3,766	3,754	1,580	2,025	2,040	4,066	2,376
Sadiola - Attributable 38%	1,757	1,702	1,731	1,936	1,299	1,202	2,501	2,769
Yatela - Attributable 40%	1,050	967	1,006	820	683	772	1,455	1,446
<b>NAMIBIA</b>	<b>596</b>	<b>606</b>	<b>601</b>	<b>758</b>	<b>558</b>	<b>636</b>	<b>1,193</b>	<b>998</b>
Navachab	596	606	601	758	558	636	1,193	998
<b>TANZANIA</b>	<b>1,282</b>	<b>1,545</b>	<b>1,411</b>	<b>1,223</b>	<b>5,273</b>	<b>5,691</b>	<b>10,964</b>	<b>6,844</b>
Geita - Attributable 100% May 2004	1,282	1,545	1,411	1,223	5,273	5,691	10,964	6,844
<b>USA</b>	<b>2,322</b>	<b>2,714</b>	<b>2,515</b>	<b>2,448</b>	<b>2,227</b>	<b>2,492</b>	<b>4,719</b>	<b>4,681</b>
Cripple Creek & Victor J.V.	2,322	2,714	2,515	2,448	2,227	2,492	4,719	4,681
<b>ZIMBABWE</b>	<b>-</b>	<b>-</b>	<b>-</b>	<b>83</b>	<b>-</b>	<b>-</b>	<b>-</b>	<b>125</b>
Freda-Rebecca	-	-	-	83	-	-	-	125
<b>ANGLOGOLD ASHANTI</b>	<b>382</b>	<b>394</b>	<b>388</b>	<b>351</b>	<b>48,560</b>	<b>48,313</b>	<b>96,873</b>	<b>80,256</b>

Rounding of figures may result in computational discrepancies.

## Key operating results

### PER REGION & OPERATION

SA Rand / Metric	Quarter	Quarter	Six months	Six months	Quarter	Quarter	Six months	Six months
	ended	ended	ended	ended	ended	ended	ended	ended
	June	March	June	June	June	March	June	June
	2005	2005	2005	2004	2005	2005	2005	2004
	<b>Total cash costs - R/kg</b>				<b>Total production costs - R/kg</b>			
<b>SOUTH AFRICA</b>	<b>60,287</b>	<b>61,859</b>	<b>61,075</b>	<b>58,466</b>	<b>74,764</b>	<b>75,408</b>	<b>75,087</b>	<b>68,030</b>
<b>Vaal River</b>								
Great Noligwa Mine	55,453	53,491	54,454	49,128	63,413	62,429	62,912	55,011
Kopanang Mine	58,208	59,318	58,769	57,792	67,239	69,864	68,565	64,394
Tau Lekoa Mine	82,469	83,401	82,924	72,839	98,972	103,281	101,077	84,653
Surface Operations	63,984	61,450	62,658	51,895	63,984	61,450	62,658	51,895
<b>West Wits</b>								
Mponeng Mine	57,209	63,457	60,168	68,387	74,926	80,469	77,551	81,264
Savuka Mine	94,685	107,171	100,811	98,037	112,597	122,173	117,295	119,041
TauTona Mine	49,773	52,492	51,188	48,428	75,999	71,026	73,411	60,800
<b>ARGENTINA</b>	<b>35,763</b>	<b>27,849</b>	<b>31,586</b>	<b>39,861</b>	<b>57,988</b>	<b>46,596</b>	<b>51,975</b>	<b>70,860</b>
Cerro Vanguardia - Attributable 92.50%	35,203	27,280	31,021	39,861	57,305	45,919	51,295	70,860
<b>AUSTRALIA</b>	<b>51,991</b>	<b>55,813</b>	<b>53,902</b>	<b>59,203</b>	<b>68,330</b>	<b>70,887</b>	<b>69,608</b>	<b>74,083</b>
Sunrise Dam	50,451	53,857	52,154	56,608	66,620	68,751	67,686	70,338
<b>BRAZIL</b>	<b>36,498</b>	<b>31,854</b>	<b>34,235</b>	<b>28,247</b>	<b>47,992</b>	<b>41,194</b>	<b>44,679</b>	<b>39,103</b>
AngloGold Ashanti Mineração	33,090	28,425	30,841	28,620	45,508	38,169	41,970	40,051
Serra Grande - Attributable 50%	31,615	28,483	30,048	27,299	40,004	36,143	38,072	36,690
<b>GHANA</b>	<b>66,546</b>	<b>63,393</b>	<b>64,974</b>	<b>60,284</b>	<b>92,058</b>	<b>86,182</b>	<b>89,002</b>	<b>84,018</b>
Bibiani	60,929	55,841	58,269	50,177	91,334	83,860	87,453	75,617
Iduapriem - Attributable 85%	69,809	55,716	62,242	65,545	89,551	75,043	81,761	87,304
Obuasi	66,915	69,979	68,367	61,905	93,257	92,649	92,736	86,944
<b>GUINEA</b>	<b>43,673</b>	<b>76,360</b>	<b>55,145</b>	<b>82,013</b>	<b>62,908</b>	<b>92,084</b>	<b>73,148</b>	<b>109,599</b>
Siguiri - Attributable 85%	43,673	76,360	55,145	82,013	62,908	92,084	73,148	109,599
<b>MALI</b>	<b>44,264</b>	<b>41,706</b>	<b>43,010</b>	<b>47,030</b>	<b>60,879</b>	<b>59,268</b>	<b>60,089</b>	<b>60,901</b>
Morila - Attributable 40%	35,711	33,432	34,577	41,445	52,583	49,458	51,028	62,781
Sadiola - Attributable 38%	53,050	54,634	53,795	48,033	67,266	73,458	70,177	60,734
Yatela - Attributable 40%	61,786	54,180	57,951	54,553	82,056	73,966	77,977	67,205
<b>NAMIBIA</b>	<b>74,345</b>	<b>79,780</b>	<b>77,146</b>	<b>66,734</b>	<b>94,010</b>	<b>88,903</b>	<b>91,378</b>	<b>73,412</b>
Navachab	74,345	79,780	77,146	66,734	94,010	88,903	91,378	73,412
<b>TANZANIA</b>	<b>68,422</b>	<b>41,204</b>	<b>53,795</b>	<b>45,284</b>	<b>84,160</b>	<b>56,421</b>	<b>69,253</b>	<b>58,910</b>
Geita - Attributable 100% May 2004	68,422	41,204	53,795	45,284	84,160	56,421	69,253	58,910
<b>USA</b>	<b>48,084</b>	<b>43,251</b>	<b>45,518</b>	<b>45,686</b>	<b>69,225</b>	<b>62,417</b>	<b>65,610</b>	<b>62,073</b>
Cripple Creek & Victor J.V.	47,084	42,443	44,620	44,676	68,225	61,610	64,712	61,064
<b>ZIMBABWE</b>	-	-	-	<b>95,120</b>	-	-	-	<b>115,258</b>
Freda-Rebecca	-	-	-	95,120	-	-	-	115,258
<b>ANGLOGOLD ASHANTI</b>	<b>57,351</b>	<b>54,778</b>	<b>56,064</b>	<b>54,456</b>	<b>74,728</b>	<b>70,639</b>	<b>72,683</b>	<b>67,924</b>

Rounding of figures may result in computational discrepancies.

## Key operating results

### PER REGION & OPERATION

	Quarter ended June 2005	Quarter ended March 2005	Six months ended June 2005	Six months ended June 2004	Quarter ended June 2005	Quarter ended March 2005	Six months ended June 2005	Six months ended June 2004
<b>SA Rand</b>	<b>Cash gross profit (loss) - Rm<sup>1</sup></b>				<b>Gross profit (loss) adjusted for the effect of unrealised non-hedge derivatives - Rm</b>			
<b>SOUTH AFRICA</b>	<b>585</b>	<b>455</b>	<b>1,041</b>	<b>1,157</b>	<b>336</b>	<b>213</b>	<b>549</b>	<b>817</b>
<b>Vaal River</b>								
Great Noligwa Mine	162	157	319	423	133	122	255	377
Kopanang Mine	107	84	191	207	83	53	136	167
Tau Lekoa Mine	18	3	22	51	(11)	(32)	(42)	3
Surface Operations	18	19	37	62	18	19	37	62
<b>West Wits</b>								
Mponeng Mine	136	80	217	116	73	22	96	38
Savuka Mine	(4)	(18)	(22)	(44)	(19)	(32)	(51)	(71)
TauTona Mine	148	130	277	342	59	61	118	241
<b>ARGENTINA</b>	<b>81</b>	<b>96</b>	<b>177</b>	<b>123</b>	<b>44</b>	<b>60</b>	<b>105</b>	<b>38</b>
Cerro Vanguardia - Attributable 92.50%	76	90	166	114	42	58	99	36
Minorities and exploration	5	6	11	9	2	2	5	2
<b>AUSTRALIA</b>	<b>189</b>	<b>135</b>	<b>324</b>	<b>261</b>	<b>131</b>	<b>80</b>	<b>211</b>	<b>186</b>
Sunrise Dam	189	135	324	266	131	80	211	191
Union Reefs	-	-	-	(5)	-	-	-	(5)
<b>BRAZIL</b>	<b>172</b>	<b>164</b>	<b>337</b>	<b>345</b>	<b>137</b>	<b>136</b>	<b>272</b>	<b>275</b>
AngloGold Ashanti Mineração	97	93	191	188	74	76	151	147
Serra Grande - Attributable 50%	42	39	81	72	36	33	69	59
Minorities and exploration	33	32	65	85	27	27	52	69
<b>GHANA</b>	<b>86</b>	<b>106</b>	<b>192</b>	<b>53</b>	<b>(21)</b>	<b>8</b>	<b>(13)</b>	<b>-</b>
Bibiani	19	24	43	17	(5)	(2)	(7)	-
Iduapriem - Attributable 85%	24	32	57	6	11	15	26	2
Obuasi	36	43	81	27	(29)	(7)	(35)	(2)
Minorities and exploration	7	7	11	3	2	2	3	-
<b>GUINEA</b>	<b>107</b>	<b>27</b>	<b>133</b>	<b>(16)</b>	<b>71</b>	<b>15</b>	<b>86</b>	<b>(16)</b>
Siguiri - Attributable 85%	89	22	111	(16)	61	13	74	(13)
Minorities and exploration	18	5	22	-	10	2	12	(3)
<b>MALI</b>	<b>170</b>	<b>165</b>	<b>336</b>	<b>227</b>	<b>104</b>	<b>97</b>	<b>201</b>	<b>131</b>
Morila - Attributable 40%	108	106	213	86	73	73	146	38
Sadiola - Attributable 38%	44	36	81	102	26	15	41	69
Yatela - Attributable 40%	18	23	42	39	5	9	14	24
<b>NAMIBIA</b>	<b>(1)</b>	<b>6</b>	<b>6</b>	<b>19</b>	<b>(6)</b>	<b>1</b>	<b>(5)</b>	<b>13</b>
Navachab	(1)	6	6	19	(6)	1	(5)	13
<b>TANZANIA</b>	<b>23</b>	<b>154</b>	<b>176</b>	<b>189</b>	<b>(56)</b>	<b>65</b>	<b>7</b>	<b>118</b>
Geita - Attributable 100% May 2004	23	154	176	189	(56)	65	7	118
<b>USA</b>	<b>79</b>	<b>98</b>	<b>177</b>	<b>168</b>	<b>16</b>	<b>41</b>	<b>57</b>	<b>34</b>
Cripple Creek & Victor J.V.	79	98	177	168	16	41	57	34
<b>ZIMBABWE</b>	<b>-</b>	<b>-</b>	<b>-</b>	<b>(2)</b>	<b>-</b>	<b>-</b>	<b>-</b>	<b>(4)</b>
Freda-Rebecca	-	-	-	(2)	-	-	-	(4)
<b>OTHER</b>	<b>28</b>	<b>(21)</b>	<b>5</b>	<b>35</b>	<b>9</b>	<b>(40)</b>	<b>(29)</b>	<b>1</b>
<b>ANGLOGOLD ASHANTI</b>	<b>1,519</b>	<b>1,385</b>	<b>2,904</b>	<b>2,559</b>	<b>765</b>	<b>676</b>	<b>1,441</b>	<b>1,593</b>

<sup>1</sup> Gross profit (loss) adjusted for the effect of unrealised non-hedge derivatives plus amortisation of tangible and intangible assets, less non-cash revenues.

Rounding of figures may result in computational discrepancies.

## Key operating results

### PER REGION & OPERATION

	Quarter ended June 2005	Quarter ended March 2005	Six months ended June 2005	Six months ended June 2004	Quarter ended June 2005	Quarter ended March 2005	Six months ended June 2005	Six months ended June 2004
<b>Imperial</b>	<b>Yield - oz/t</b>				<b>Gold produced - oz (000)</b>			
<b>SOUTH AFRICA</b>					<b>662</b>	<b>666</b>	<b>1,329</b>	<b>1,408</b>
<b>Vaal River</b>								
Great Noligwa Mine	0.277	0.299	0.287	0.302	174	180	354	385
Kopanang Mine	0.203	0.218	0.210	0.224	118	120	238	243
Tau Lekoa Mine	0.122	0.116	0.119	0.114	68	65	134	148
Surface Operations	0.014	0.013	0.014	0.016	21	23	45	57
<b>West Wits</b>								
Mponeng Mine	0.277	0.242	0.259	0.237	128	115	242	209
Savuka Mine	0.173	0.159	0.166	0.172	33	32	66	73
TauTona Mine	0.276	0.301	0.288	0.335	120	131	251	293
<b>ARGENTINA</b>					<b>51</b>	<b>57</b>	<b>108</b>	<b>82</b>
Cerro Vanguardia - Attributable 92.50%	0.231	0.238	0.234	0.179	51	57	108	82
<b>AUSTRALIA</b>					<b>131</b>	<b>131</b>	<b>261</b>	<b>184</b>
Sunrise Dam	0.125	0.134	0.129	0.092	131	131	261	184
<b>BRAZIL</b>					<b>86</b>	<b>81</b>	<b>167</b>	<b>163</b>
AngloGold Ashanti Mineração <sup>2</sup>	0.203	0.232	0.217	0.229	61	57	118	117
Serra Grande - Attributable 50%	0.234	0.233	0.234	0.226	24	24	48	46
<b>GHANA</b>					<b>172</b>	<b>171</b>	<b>343</b>	<b>123</b>
Bibiani <sup>3</sup>	0.044	0.046	0.045	0.052	30	33	63	25
Iduapriem <sup>3</sup> - Attributable 85%	0.050	0.052	0.051	0.043	40	46	86	27
Obuasi <sup>5</sup>	0.144	0.130	0.140	0.157	102	92	193	71
<b>GUINEA</b>					<b>80</b>	<b>43</b>	<b>123</b>	<b>17</b>
Siguiiri <sup>3</sup> - Attributable 85%	0.039	-	0.039	-	80	43	123	17
<b>MALI</b>					<b>133</b>	<b>128</b>	<b>261</b>	<b>211</b>
Morila - Attributable 40%	0.161	0.177	0.168	0.105	67	67	134	77
Sadiola - Attributable 38%	0.088	0.077	0.083	0.087	43	38	81	89
Yatela <sup>4</sup> - Attributable 40%	0.073	0.076	0.075	0.105	23	23	46	45
<b>NAMIBIA</b>					<b>18</b>	<b>19</b>	<b>37</b>	<b>31</b>
Navachab	0.058	0.056	0.057	0.044	18	19	37	31
<b>TANZANIA</b>					<b>165</b>	<b>192</b>	<b>357</b>	<b>233</b>
Geita - Attributable 100% May 2004	0.097	0.121	0.109	0.107	165	192	357	233
<b>USA</b>					<b>71</b>	<b>81</b>	<b>152</b>	<b>148</b>
Cripple Creek & Victor J.V. <sup>4</sup>	0.018	0.019	0.018	0.018	71	81	152	148
<b>ZIMBABWE</b>					-	-	-	<b>4</b>
Freda-Rebecca	-	-	-	0.047	-	-	-	4
<b>ANGLOGOLD ASHANTI</b>					<b>1,569</b>	<b>1,569</b>	<b>3,138</b>	<b>2,603</b>
Underground Operations	0.212	0.214	0.213	0.226	809	800	1,609	1,562
Surface and Dump Reclamation	0.014	0.014	0.014	0.017	30	32	62	62
Open-pit Operations	0.085	0.105	0.094	0.090	606	585	1,192	758
Heap leach Operations <sup>1</sup>	0.023	0.025	0.024	0.025	123	152	275	222
					<b>1,569</b>	<b>1,569</b>	<b>3,138</b>	<b>2,603</b>

Attributable year to date production at Moab Khotsong yielded 11,000 oz which will be capitalised against pre-production costs.

<sup>1</sup> The yield is calculated on gold placed into leach pad inventory / tonnes placed on to leach pad.

<sup>2</sup> The yield of AngloGold Ashanti Mineração represents underground operations. Rounding of figures may result in computational discrepancies.

<sup>3</sup> The yield of Bibiani, Siguiiri and Iduapriem represents open-pit operations.

<sup>4</sup> Yatela and Cripple Creek & Victor Joint Venture operations yield reflects gold placed/tonnes placed.

<sup>5</sup> The yield of Obuasi represents underground operations

## Key operating results

### PER REGION & OPERATION

	Quarter ended June 2005	Quarter ended March 2005	Six months ended June 2005	Six months ended June 2004	Quarter ended June 2005	Quarter ended March 2005	Six months ended June 2005	Six months ended June 2004
<b>Imperial</b>	<b>Productivity per employee - oz</b>				<b>Gold sold - oz (000)</b>			
<b>SOUTH AFRICA</b>	<b>7.99</b>	<b>7.71</b>	<b>7.85</b>	<b>7.79</b>	<b>662</b>	<b>666</b>	<b>1,328</b>	<b>1,407</b>
<b>Vaal River</b>								
Great Noligwa Mine	8.47	8.74	8.61	8.70	174	180	353	385
Kopanang Mine	7.58	7.37	7.47	7.28	118	120	238	243
Tau Lekoa Mine	5.44	5.41	5.42	6.01	68	65	134	148
Surface Operations	23.48	21.80	22.57	28.00	21	23	45	56
<b>West Wits</b>								
Mponeng Mine	8.99	8.08	8.53	7.36	128	115	242	209
Savuka Mine	4.31	3.80	4.04	3.76	33	32	65	73
TauTona Mine	10.53	9.52	9.98	10.26	120	131	251	293
<b>ARGENTINA</b>	<b>29.28</b>	<b>26.20</b>	<b>27.57</b>	<b>23.22</b>	<b>50</b>	<b>56</b>	<b>106</b>	<b>85</b>
Cerro Vanguardia - Attributable 92.50%	29.28	26.20	27.57	23.22	50	56	106	85
<b>AUSTRALIA</b>	<b>101.23</b>	<b>108.61</b>	<b>104.79</b>	<b>73.21</b>	<b>131</b>	<b>130</b>	<b>261</b>	<b>184</b>
Sunrise Dam	114.38	122.57	118.33	86.04	131	130	261	184
<b>BRAZIL</b>	<b>21.41</b>	<b>21.31</b>	<b>21.36</b>	<b>20.50</b>	<b>83</b>	<b>80</b>	<b>164</b>	<b>163</b>
AngloGold Ashanti Mineração	18.95	18.62	18.79	18.67	58	56	115	118
Serra Grande - Attributable 50%	31.91	32.36	32.13	27.34	25	24	49	45
<b>GHANA</b>	<b>9.03</b>	<b>8.76</b>	<b>8.89</b>	<b>9.75</b>	<b>173</b>	<b>165</b>	<b>338</b>	<b>122</b>
Bibiani	14.94	15.65	15.30	32.92	30	33	63	25
Iduapriem - Attributable 85%	18.78	21.91	20.34	19.59	41	41	82	27
Obuasi	6.84	5.99	6.41	6.75	103	91	193	70
<b>GUINEA</b>	<b>24.87</b>	<b>15.73</b>	<b>20.66</b>	<b>8.78</b>	<b>75</b>	<b>43</b>	<b>118</b>	<b>-</b>
Siguiiri - Attributable 85%	24.87	15.73	20.66	8.78	75	43	118	-
Minorities and exploration								
<b>MALI</b>	<b>66.77</b>	<b>64.30</b>	<b>65.54</b>	<b>45.34</b>	<b>129</b>	<b>130</b>	<b>258</b>	<b>211</b>
Morila - Attributable 40%	120.31	121.09	120.70	50.79	65	66	131	76
Sadiola - Attributable 38%	56.49	54.72	55.65	62.26	42	39	80	89
Yatela - Attributable 40%	33.76	31.09	32.36	26.38	22	25	47	46
<b>NAMIBIA</b>	<b>19.16</b>	<b>19.49</b>	<b>19.33</b>	<b>24.36</b>	<b>18</b>	<b>20</b>	<b>38</b>	<b>32</b>
Navachab	19.16	19.49	19.33	24.36	18	20	38	32
<b>TANZANIA</b>	<b>41.21</b>	<b>49.68</b>	<b>45.37</b>	<b>39.31</b>	<b>170</b>	<b>183</b>	<b>353</b>	<b>220</b>
Geita - Attributable 100% May 2004	41.21	49.68	45.37	39.31	170	183	353	220
<b>USA</b>	<b>74.65</b>	<b>87.26</b>	<b>80.86</b>	<b>78.71</b>	<b>72</b>	<b>80</b>	<b>152</b>	<b>150</b>
Cripple Creek & Victor J.V.	74.65	87.26	80.86	78.71	72	80	152	150
<b>ZIMBABWE</b>	<b>-</b>	<b>-</b>	<b>-</b>	<b>2.67</b>	<b>-</b>	<b>-</b>	<b>-</b>	<b>4</b>
Freda-Rebecca	-	-	-	2.67	-	-	-	4
<b>ANGLOGOLD ASHANTI</b>	<b>12.28</b>	<b>12.66</b>	<b>12.47</b>	<b>11.28</b>	<b>1,561</b>	<b>1,553</b>	<b>3,115</b>	<b>2,580</b>

Rounding of figures may result in computational discrepancies.

## Key operating results

### PER REGION & OPERATION

	Quarter	Quarter	Six months	Six months	Quarter	Quarter	Six months	Six months
	ended	ended	ended	ended	ended	ended	ended	ended
	June	March	June	June	June	March	June	June
	2005	2005	2005	2004	2005	2005	2005	2004
<b>US Dollar / Imperial</b>	<b>Total cash costs - \$/oz</b>				<b>Total production costs - \$/oz</b>			
<b>SOUTH AFRICA</b>	<b>293</b>	<b>320</b>	<b>307</b>	<b>272</b>	<b>363</b>	<b>390</b>	<b>377</b>	<b>317</b>
<b>Vaal River</b>								
Great Noligwa Mine	270	277	273	229	309	323	316	256
Kopanang Mine	283	307	295	269	327	362	345	300
Tau Lekoa Mine	400	432	416	339	480	535	507	394
Surface Operations	310	318	314	242	310	318	314	242
<b>West Wits</b>								
Mponeng Mine	278	329	302	319	364	417	389	379
Savuka Mine	461	555	507	457	548	633	589	555
TauTona Mine	243	272	258	226	369	368	369	284
<b>ARGENTINA</b>	<b>173</b>	<b>144</b>	<b>158</b>	<b>187</b>	<b>280</b>	<b>241</b>	<b>259</b>	<b>332</b>
Cerro Vanguardia - Attributable 92.50%	171	141	155	186	277	238	256	330
<b>AUSTRALIA</b>	<b>253</b>	<b>289</b>	<b>271</b>	<b>276</b>	<b>333</b>	<b>367</b>	<b>350</b>	<b>346</b>
Sunrise Dam	246	279	262	264	324	356	340	328
<b>BRAZIL</b>	<b>177</b>	<b>165</b>	<b>171</b>	<b>130</b>	<b>233</b>	<b>213</b>	<b>223</b>	<b>183</b>
AngloGold Ashanti Mineração	161	147	154	133	221	198	210	187
Serra Grande - Attributable 50%	153	147	150	127	194	187	190	171
<b>GHANA</b>	<b>322</b>	<b>328</b>	<b>325</b>	<b>284</b>	<b>446</b>	<b>446</b>	<b>445</b>	<b>399</b>
Bibiani	296	289	292	237	443	434	439	358
Iduapriem - Attributable 85%	339	288	312	309	435	389	410	411
Obuasi	324	362	342	292	451	480	464	410
<b>GUINEA</b>	<b>212</b>	<b>395</b>	<b>276</b>	<b>386</b>	<b>305</b>	<b>477</b>	<b>365</b>	<b>519</b>
Siguiri - Attributable 85%	212	395	276	386	305	477	365	519
<b>MALI</b>	<b>214</b>	<b>216</b>	<b>215</b>	<b>210</b>	<b>295</b>	<b>307</b>	<b>301</b>	<b>284</b>
Morila - Attributable 40%	173	173	173	194	255	256	255	293
Sadiola - Attributable 38%	256	283	269	224	325	380	351	283
Yatela - Attributable 40%	299	280	290	255	398	383	390	314
<b>NAMIBIA</b>	<b>362</b>	<b>413</b>	<b>388</b>	<b>312</b>	<b>459</b>	<b>460</b>	<b>460</b>	<b>343</b>
Navachab	362	413	388	312	459	460	460	343
<b>TANZANIA</b>	<b>331</b>	<b>213</b>	<b>268</b>	<b>212</b>	<b>408</b>	<b>292</b>	<b>345</b>	<b>275</b>
Geita - Attributable 100% May 2004	331	213	268	212	408	292	345	275
<b>USA</b>	<b>232</b>	<b>224</b>	<b>228</b>	<b>213</b>	<b>334</b>	<b>323</b>	<b>328</b>	<b>289</b>
Cripple Creek & Victor J.V.	227	220	223	208	329	319	324	284
<b>ZIMBABWE</b>	-	-	-	<b>447</b>	-	-	-	<b>543</b>
Freda-Rebecca	-	-	-	447	-	-	-	543
<b>ANGLOGOLD ASHANTI</b>	<b>278</b>	<b>284</b>	<b>281</b>	<b>254</b>	<b>363</b>	<b>366</b>	<b>364</b>	<b>317</b>

Rounding of figures may result in computational discrepancies.

## Key operating results

### PER REGION & OPERATION

	Quarter	Quarter	Six months	Six months	Quarter	Quarter	Six months	Six months
	ended	ended	ended	ended	ended	ended	ended	ended
	June	March	June	June	June	March	June	June
	2005	2005	2005	2004	2005	2005	2005	2004
<b>US Dollar</b>	<b>Cash gross profit (loss) - \$m<sup>1</sup></b>				<b>Gross profit (loss) adjusted for the effect of unrealised non-hedge derivatives - \$m</b>			
<b>SOUTH AFRICA</b>	<b>91</b>	<b>76</b>	<b>166</b>	<b>174</b>	<b>52</b>	<b>35</b>	<b>88</b>	<b>123</b>
<b>Vaal River</b>								
Great Noligwa Mine	25	26	51	64	21	20	41	57
Kopanang Mine	17	14	31	31	13	9	22	25
Tau Lekoa Mine	3	1	3	8	(2)	(5)	(7)	1
Surface Operations	3	4	6	9	3	4	6	9
<b>West Wits</b>								
Mponeng Mine	21	13	34	18	11	3	15	6
Savuka Mine	(1)	(3)	(3)	(7)	(3)	(5)	(8)	(11)
TauTona Mine	23	21	44	51	9	9	19	36
<b>ARGENTINA</b>	<b>13</b>	<b>16</b>	<b>29</b>	<b>19</b>	<b>7</b>	<b>10</b>	<b>17</b>	<b>6</b>
Cerro Vanguardia - Attributable 92.50%	12	15	27	18	7	10	16	6
Minorities and exploration	1	1	2	1	-	-	1	-
<b>AUSTRALIA</b>	<b>30</b>	<b>22</b>	<b>52</b>	<b>39</b>	<b>21</b>	<b>13</b>	<b>34</b>	<b>28</b>
Sunrise Dam	30	22	52	40	21	13	34	29
Union Reefs	-	-	-	(1)	-	-	-	(1)
<b>BRAZIL</b>	<b>27</b>	<b>27</b>	<b>54</b>	<b>52</b>	<b>21</b>	<b>23</b>	<b>44</b>	<b>41</b>
AngloGold Ashanti Mineração	15	16	30	28	11	13	24	22
Serra Grande - Attributable 50%	7	7	13	11	6	6	11	9
Minorities and exploration	5	4	11	13	4	4	9	10
<b>GHANA</b>	<b>13</b>	<b>18</b>	<b>31</b>	<b>8</b>	<b>(3)</b>	<b>1</b>	<b>(2)</b>	<b>-</b>
Bibiani	3	5	8	3	(1)	-	(1)	-
Iduapriem - Attributable 85%	4	5	9	-	2	2	4	-
Obuasi	5	7	13	4	(5)	(1)	(6)	-
Minorities and exploration	1	1	1	1	1	-	1	-
<b>GUINEA</b>	<b>16</b>	<b>4</b>	<b>21</b>	<b>(3)</b>	<b>11</b>	<b>2</b>	<b>13</b>	<b>(2)</b>
Sigiri - Attributable 85%	14	4	17	(2)	9	2	11	(2)
Minorities and exploration	2	-	4	(1)	2	-	2	-
<b>MALI</b>	<b>26</b>	<b>27</b>	<b>53</b>	<b>34</b>	<b>16</b>	<b>16</b>	<b>32</b>	<b>20</b>
Morila - Attributable 40%	16	17	35	13	11	12	24	6
Sadiola - Attributable 38%	7	6	12	15	4	2	6	10
Yatela - Attributable 40%	3	4	6	6	1	2	2	4
<b>NAMIBIA</b>	<b>-</b>	<b>1</b>	<b>1</b>	<b>3</b>	<b>(1)</b>	<b>-</b>	<b>(1)</b>	<b>2</b>
Navachab	-	1	1	3	(1)	-	(1)	2
<b>TANZANIA</b>	<b>3</b>	<b>25</b>	<b>29</b>	<b>28</b>	<b>(9)</b>	<b>10</b>	<b>2</b>	<b>18</b>
Geita - Attributable 100% May 2004	3	25	29	28	(9)	10	2	18
<b>USA</b>	<b>12</b>	<b>16</b>	<b>28</b>	<b>25</b>	<b>2</b>	<b>7</b>	<b>9</b>	<b>5</b>
Cripple Creek & Victor J.V.	12	16	28	25	2	7	9	5
<b>ZIMBABWE</b>	<b>-</b>	<b>-</b>	<b>-</b>	<b>(1)</b>	<b>-</b>	<b>-</b>	<b>-</b>	<b>(1)</b>
Freda-Rebecca	-	-	-	(1)	-	-	-	(1)
<b>OTHER</b>	<b>4</b>	<b>(2)</b>	<b>1</b>	<b>8</b>	<b>-</b>	<b>(5)</b>	<b>(6)</b>	<b>-</b>
<b>ANGLOGOLD ASHANTI</b>	<b>235</b>	<b>230</b>	<b>465</b>	<b>386</b>	<b>117</b>	<b>112</b>	<b>230</b>	<b>240</b>

<sup>1</sup> Gross profit (loss) adjusted for the effect of unrealised non-hedge derivatives plus amortisation of tangible and intangible assets, less non-cash revenues.

Rounding of figures may result in computational discrepancies.

## South Africa

### VAAL RIVER

		Quarter ended	Quarter ended	Quarter ended	Six months ended	Quarter ended	Quarter ended	Quarter ended	Six months ended
		June 2005	March 2005	June 2004	June 2005	June 2005	March 2005	June 2004	June 2005
<b>GREAT NOLIGWA MINE</b>		<b>Rand / Metric</b>				<b>Dollar / Imperial</b>			
<b>OPERATING RESULTS</b>									
<b>UNDERGROUND OPERATION</b>									
Area mined	- 000 m <sup>2</sup> / - 000 ft <sup>2</sup>	112	99	105	211	1,206	1,066	1,125	2,272
Milled	- 000 tonnes / - 000 tons	569	547	615	1,116	627	603	678	1,230
Yield	- g / t / - oz / t	9.49	10.23	9.95	9.86	0.277	0.299	0.290	0.287
Gold produced	- kg / - oz (000)	5,401	5,598	6,121	10,998	174	180	196	354
Gold sold	- kg / - oz (000)	5,399	5,595	6,117	10,995	174	180	196	353
Price received	- R / kg / - \$ / oz - sold	89,038	85,182	82,152	87,076	433	441	389	437
Total cash costs	- R / - \$ - ton milled / - R / kg / - \$ / oz - produced	526	547	471	537	75	83	65	79
		55,453	53,491	47,340	54,454	270	277	223	273
Total production costs	- R / kg / - \$ / oz - produced	63,413	62,429	52,764	62,912	309	323	249	316
<b>PRODUCTIVITY PER EMPLOYEE</b>									
Target	- g / - oz	299	285	295	292	9.61	9.16	9.48	9.39
Actual	- g / - oz	263	272	286	268	8.47	8.74	9.21	8.61
Target	- m <sup>2</sup> / - ft <sup>2</sup>	5.26	4.86	4.80	5.06	56.61	52.34	51.63	54.48
Actual	- m <sup>2</sup> / - ft <sup>2</sup>	5.46	4.81	4.89	5.14	58.82	51.79	52.63	55.30
<b>FINANCIAL RESULTS (MILLION)</b>									
Gold income		505	445	481	950	79	74	73	153
Cost of sales		348	355	337	702	54	59	51	113
Cash operating costs		297	297	287	593	46	49	43	96
Other cash costs		3	3	3	5	-	-	1	1
Total cash costs		299	300	290	599	47	49	44	97
Retrenchment costs		8	6	3	13	1	1	1	2
Rehabilitation and other non-cash costs		7	9	6	16	1	2	1	3
Production costs		314	315	299	628	49	52	46	101
Amortisation of tangible assets		29	35	24	64	4	6	4	10
Inventory change		5	5	14	10	1	1	1	2
		158	90	144	248	24	15	22	39
Realised non-hedge derivatives		(25)	32	22	7	(3)	5	4	2
Gross profit excluding the effect of unrealised non-hedge derivatives		133	122	166	255	21	20	26	41
Capital expenditure		49	55	65	104	8	9	10	17

Rounding of figures may result in computational discrepancies.

## South Africa

### VAAL RIVER

		Quarter	Quarter	Quarter	Six months	Quarter	Quarter	Quarter	Six months			
		ended	ended	ended	ended	ended	ended	ended	ended			
		June	March	June	June	June	March	June	June			
		2005	2005	2004	2005	2005	2005	2004	2005			
		Rand / Metric				Dollar / Imperial						
<b>KOPANANG MINE</b>												
<b>OPERATING RESULTS</b>												
<b>UNDERGROUND OPERATION</b>												
Area mined	- 000 m <sup>2</sup>	/	- 000 ft <sup>2</sup>									
				123	121	121	244	1,329	1,301	1,301	2,631	
Milled	- 000 tonnes	/	- 000 tons									
				527	499	520	1,026	581	550	573	1,131	
Yield	- g / t	/	- oz / t									
				6.95	7.49	7.35	7.21	0.203	0.218	0.214	0.210	
Gold produced	- kg	/	- oz (000)									
				3,659	3,737	3,821	7,396	118	120	122	238	
Gold sold	- kg	/	- oz (000)									
				3,659	3,735	3,817	7,394	118	120	122	238	
Price received	- R / kg	/	- \$ / oz	- sold								
				90,270	84,282	82,361	87,245	437	436	390	437	
Total cash costs	- R	/	- \$	- ton milled								
	- R / kg	/	- \$ / oz	- produced	404	444	410	424	57	67	56	62
				58,208	59,318	55,814	58,769	283	307	263	295	
Total production costs	- R / kg	/	- \$ / oz	- produced	67,239	69,864	62,249	68,565	327	362	294	345
<b>PRODUCTIVITY PER EMPLOYEE</b>												
Target	- g	/	- oz									
				220	215	212	217	7.06	6.92	6.80	6.99	
Actual	- g	/	- oz									
				236	229	230	232	7.58	7.37	7.41	7.47	
Target	- m <sup>2</sup>	/	- ft <sup>2</sup>									
				7.07	6.77	6.71	6.92	76.12	72.85	72.23	74.48	
Actual	- m <sup>2</sup>	/	- ft <sup>2</sup>									
				7.96	7.41	7.29	7.68	85.69	79.77	78.42	82.66	
<b>FINANCIAL RESULTS (MILLION)</b>												
Gold income				347	297	300	644	54	49	45	103	
Cost of sales				247	262	246	509	39	43	37	82	
Cash operating costs				211	220	211	430	33	37	32	69	
Other cash costs				2	2	3	5	-	-	1	1	
Total cash costs				213	222	214	435	33	37	33	70	
Retrenchment costs				5	2	-	8	1	-	-	1	
Rehabilitation and other non-cash costs				4	6	4	10	1	1	-	2	
Production costs				222	230	218	452	35	38	33	73	
Amortisation of tangible assets				24	31	20	55	4	5	3	9	
Inventory change				1	1	8	2	-	-	1	-	
				101	35	54	135	15	6	8	21	
Realised non-hedge derivatives				(17)	18	15	1	(2)	3	2	1	
Gross profit excluding the effect of unrealised non-hedge derivatives				83	53	69	136	13	9	10	22	
Capital expenditure				60	64	61	124	9	11	9	20	

Rounding of figures may result in computational discrepancies.

## South Africa

### VAAL RIVER

	Quarter ended June 2005	Quarter ended March 2005	Quarter ended June 2004	Six months ended June 2005	Quarter ended June 2005	Quarter ended March 2005	Quarter ended June 2004	Six months ended June 2005
	Rand / Metric				Dollar / Imperial			
<b>TAU LEKOA MINE</b>								
<b>OPERATING RESULTS</b>								
<b>UNDERGROUND OPERATION</b>								
Area mined	- 000 m <sup>2</sup>	/	- 000 ft <sup>2</sup>					
	101	95	109	196	1,089	1,024	1,169	2,114
Milled	- 000 tonnes	/	- 000 tons					
	509	510	602	1,019	561	563	664	1,124
Yield	- g / t	/	- oz / t					
	4.18	3.98	4.17	4.08	0.122	0.116	0.122	0.119
Gold produced	- kg	/	- oz (000)					
	2,126	2,029	2,509	4,154	68	65	81	134
Gold sold	- kg	/	- oz (000)					
	2,125	2,028	2,506	4,153	68	65	81	134
Price received	- R / kg	/	- \$ / oz	- sold				
	90,580	86,035	82,373	88,360	438	445	390	442
Total cash costs	- R	/	- \$	- ton milled				
	344	332	279	338	49	50	38	49
	- R / kg	/	- \$ / oz	- produced				
	82,469	83,401	67,030	82,924	400	432	316	416
Total production costs	- R / kg	/	- \$ / oz	- produced				
	98,972	103,281	78,451	101,077	480	535	370	507
<b>PRODUCTIVITY PER EMPLOYEE</b>								
Target	- g	/	- oz					
	220	210	221	215	7.06	6.76	7.12	6.91
Actual	- g	/	- oz					
	169	168	201	169	5.44	5.41	6.46	5.42
Target	- m <sup>2</sup>	/	- ft <sup>2</sup>					
	9.70	9.50	9.24	9.60	104.37	102.31	99.47	103.34
Actual	- m <sup>2</sup>	/	- ft <sup>2</sup>					
	8.05	7.88	8.70	7.97	86.66	84.87	93.63	85.78
<b>FINANCIAL RESULTS (MILLION)</b>								
Gold income	203	161	198	364	31	27	30	58
Cost of sales	203	206	201	409	32	34	30	66
Cash operating costs	174	168	166	342	27	29	25	55
Other cash costs	1	1	1	3	-	-	-	-
Total cash costs	175	169	167	344	27	29	25	56
Retrenchment costs	4	3	1	7	1	-	-	1
Rehabilitation and other non-cash costs	2	3	3	4	-	-	1	1
Production costs	181	175	171	356	28	29	26	57
Amortisation of tangible assets	29	35	27	64	5	6	3	10
Inventory change	(7)	(4)	3	(11)	(1)	(1)	1	(2)
	-	(45)	(3)	(45)	-	(7)	-	(8)
Realised non-hedge derivatives	(10)	13	9	3	(1)	2	1	1
Gross (loss) profit excluding the effect of unrealised non-hedge derivatives	(11)	(32)	6	(42)	(2)	(5)	1	(7)
Capital expenditure	19	31	40	49	3	5	6	8

Rounding of figures may result in computational discrepancies.

## South Africa

### VAAL RIVER

		Quarter	Quarter	Quarter	Six months	Quarter	Quarter	Quarter	Six months
		ended	ended	ended	ended	ended	ended	ended	ended
		June	March	June	June	June	March	June	June
		2005	2005	2004	2005	2005	2005	2004	2005
<b>SURFACE OPERATIONS</b>		<b>Rand / Metric</b>				<b>Dollar / Imperial</b>			
<b>OPERATING RESULTS</b>									
Milled	- 000 tonnes / - 000 tons	1,396	1,585	1,720	2,981	1,539	1,747	1,896	3,286
Yield	- g / t / - oz / t	0.48	0.46	0.55	0.47	0.014	0.013	0.016	0.014
Gold produced	- kg / - oz (000)	666	730	940	1,396	21	23	31	45
Gold sold	- kg / - oz (000)	666	730	939	1,396	21	23	30	45
Price received	- R / kg / - \$ / oz - sold	90,434	84,836	82,425	87,506	437	439	391	438
Total cash costs	- R / - \$ - ton milled / - R / kg / - \$ / oz - produced	31	28	27	29	4	4	4	4
		63,984	61,450	49,274	62,658	310	318	232	314
Total production costs	- R / kg / - \$ / oz - produced	63,984	61,450	49,274	62,658	310	318	232	314
<b>PRODUCTIVITY PER EMPLOYEE</b>									
Target	- g / - oz	726	746	726	736	23.35	23.98	23.33	23.66
Actual	- g / - oz	730	678	952	702	23.48	21.80	30.61	22.57
<b>FINANCIAL RESULTS (MILLION)</b>									
Gold income		63	58	74	121	10	10	12	19
Cost of sales		43	43	44	86	7	7	7	14
Cash operating costs		43	45	46	87	7	7	7	14
Other cash costs		-	-	-	-	-	-	-	-
Total cash costs		43	45	46	87	7	7	7	14
Retrenchment costs		-	-	-	-	-	-	-	-
Rehabilitation and other non-cash costs		-	-	-	-	-	-	-	-
Production costs		43	45	46	87	7	7	7	14
Amortisation of tangible assets		-	-	-	-	-	-	-	-
Inventory change		-	(2)	(2)	(2)	-	-	-	-
		21	15	30	36	3	3	5	6
Realised non-hedge derivatives		(3)	4	3	1	-	1	-	-
Gross profit excluding the effect of unrealised non-hedge derivatives		18	19	33	37	3	4	5	6
Capital expenditure		40	11	20	51	6	2	3	8

Rounding of figures may result in computational discrepancies.

## South Africa

### WEST WITS

		Quarter	Quarter	Quarter	Six months	Quarter	Quarter	Quarter	Six months
		ended	ended	ended	ended	ended	ended	ended	ended
		June	March	June	June	June	March	June	June
		2005	2005	2004	2005	2005	2005	2004	2005
<b>MPONENG MINE</b>		<b>Rand / Metric</b>				<b>Dollar / Imperial</b>			
<b>OPERATING RESULTS</b>									
<b>UNDERGROUND OPERATION</b>									
Area mined	- 000 m <sup>2</sup> / - 000 ft <sup>2</sup>	87	83	80	170	934	896	864	1,830
Milled	- 000 tonnes / - 000 tons	418	430	419	848	461	474	462	934
Yield	- g / t / - oz / t	9.50	8.31	7.80	8.89	0.277	0.242	0.227	0.259
Gold produced	- kg / - oz (000)	3,968	3,571	3,266	7,539	128	115	105	242
Gold sold	- kg / - oz (000)	3,970	3,567	3,263	7,537	128	115	105	242
Price received	- R / kg / - \$ / oz - sold	91,547	85,205	81,991	88,546	442	441	388	442
Total cash costs	- R / kg / - \$ / oz - ton milled / - produced	543	527	534	535	77	80	74	78
		57,209	63,457	68,486	60,168	278	329	323	302
Total production costs	- R / kg / - \$ / oz - produced	74,926	80,469	81,698	77,551	364	417	386	389
<b>PRODUCTIVITY PER EMPLOYEE</b>									
Target	- g / - oz	243	239	232	241	7.80	7.70	7.45	7.75
Actual	- g / - oz	280	251	231	265	8.99	8.08	7.44	8.53
Target	- m <sup>2</sup> / - ft <sup>2</sup>	5.63	5.30	5.66	5.47	60.60	57.08	60.90	58.85
Actual	- m <sup>2</sup> / - ft <sup>2</sup>	6.11	5.86	5.68	5.98	65.79	63.04	61.18	64.42
<b>FINANCIAL RESULTS (MILLION)</b>									
Gold income		381	283	256	665	59	47	39	106
Cost of sales		290	281	268	571	45	47	41	92
Cash operating costs		225	224	222	449	35	38	33	72
Other cash costs		2	2	2	4	-	-	-	1
Total cash costs		227	226	224	454	35	38	33	73
Retrenchment costs		6	1	1	7	1	-	-	1
Rehabilitation and other non-cash costs		1	2	1	3	-	-	1	-
Production costs		234	229	226	464	37	38	34	75
Amortisation of tangible assets		63	58	40	121	10	10	6	19
Inventory change		(7)	(6)	2	(13)	(1)	(1)	1	(2)
		91	2	(12)	94	14	-	(2)	14
Realised non-hedge derivatives		(18)	20	11	2	(3)	3	2	1
Gross profit (loss) excluding the effect of unrealised non-hedge derivatives		73	22	(1)	96	11	3	-	15
Capital expenditure		70	75	98	145	11	12	15	23

Rounding of figures may result in computational discrepancies.

## South Africa

### WEST WITS

		Quarter	Quarter	Quarter	Six months	Quarter	Quarter	Quarter	Six months
		ended	ended	ended	ended	ended	ended	ended	ended
		June	March	June	June	June	March	June	June
		2005	2005	2004	2005	2005	2005	2004	2005
<b>SAVUKA MINE</b>		<b>Rand / Metric</b>				<b>Dollar / Imperial</b>			
<b>OPERATING RESULTS</b>									
<b>UNDERGROUND OPERATION</b>									
Area mined	- 000 m <sup>2</sup> / - 000 ft <sup>2</sup>	36	41	40	77	386	443	424	829
Milled	- 000 tonnes / - 000 tons	175	184	198	359	193	203	218	395
Yield	- g / t / - oz / t	5.93	5.44	5.87	5.68	0.173	0.159	0.171	0.166
Gold produced	- kg / - oz (000)	1,038	1,000	1,162	2,038	33	32	38	66
Gold sold	- kg / - oz (000)	1,026	999	1,161	2,025	33	32	38	65
Price received	- R / kg / - \$ / oz - sold	91,285	85,838	81,915	88,598	441	444	388	443
Total cash costs	- R / kg / - \$ / oz - ton milled / - \$ / oz - produced	562	583	575	573	80	88	79	84
		94,685	107,171	97,928	100,811	461	555	462	507
Total production costs	- R / kg / - \$ / oz - produced	112,597	122,173	115,465	117,295	548	633	545	589
<b>PRODUCTIVITY PER EMPLOYEE</b>									
Target	- g / - oz	152	144	136	148	4.89	4.64	4.36	4.77
Actual	- g / - oz	134	118	123	126	4.31	3.80	3.97	4.04
Target	- m <sup>2</sup> / - ft <sup>2</sup>	5.13	5.03	4.64	5.08	55.23	54.11	49.96	54.67
Actual	- m <sup>2</sup> / - ft <sup>2</sup>	4.63	4.85	4.18	4.75	49.80	52.25	45.00	51.08
<b>FINANCIAL RESULTS (MILLION)</b>									
Gold income		98	79	91	178	15	13	14	28
Cost of sales		113	117	136	231	18	19	21	37
Cash operating costs		97	106	113	203	15	18	17	33
Other cash costs		1	1	2	2	-	-	-	-
Total cash costs		98	107	115	205	15	18	17	33
Retrenchment costs		4	1	1	4	1	-	-	1
Rehabilitation and other non-cash costs		-	-	6	1	-	-	1	-
Production costs		102	108	122	211	16	18	18	34
Amortisation of tangible assets		15	14	13	29	2	2	3	5
Inventory change		(4)	(5)	1	(9)	(1)	(1)	-	(1)
		(15)	(38)	(45)	(53)	(2)	(6)	(7)	(9)
Realised non-hedge derivatives		(5)	6	4	2	(1)	1	-	-
Gross loss excluding the effect of unrealised non-hedge derivatives		(19)	(32)	(41)	(51)	(3)	(5)	(7)	(8)
Capital expenditure		15	14	15	28	2	2	2	5

Rounding of figures may result in computational discrepancies.

## South Africa

### WEST WITS

		Quarter	Quarter	Quarter	Six months	Quarter	Quarter	Quarter	Six months
		ended	ended	ended	ended	ended	ended	ended	ended
		June	March	June	June	June	March	June	June
		2005	2005	2004	2005	2005	2005	2004	2005
<b>TAUTONA MINE</b>		<b>Rand / Metric</b>				<b>Dollar / Imperial</b>			
<b>OPERATING RESULTS</b>									
<b>UNDERGROUND OPERATION</b>									
Area mined	- 000 m <sup>2</sup> / - 000 ft <sup>2</sup>	69	69	69	138	741	741	736	1,482
Milled	- 000 tonnes / - 000 tons	396	394	419	791	437	435	462	872
Yield	- g / t / - oz / t	9.45	10.31	10.88	9.88	0.276	0.301	0.317	0.288
Gold produced	- kg / - oz (000)	3,747	4,067	4,559	7,814	120	131	147	251
Gold sold	- kg / - oz (000)	3,740	4,063	4,555	7,803	120	131	146	251
Price received	- R / kg / - \$ / oz - sold	90,550	84,559	82,055	87,431	439	438	389	438
Total cash costs	- R / - \$ - ton milled / - R / kg / - \$ / oz - produced	470	541	529	506	67	82	73	74
		49,773	52,492	48,572	51,188	243	272	229	258
Total production costs	- R / kg / - \$ / oz - produced	75,999	71,026	61,076	73,411	369	368	289	369
<b>PRODUCTIVITY PER EMPLOYEE</b>									
Target	- g / - oz	326	322	338	324	10.50	10.35	10.87	10.42
Actual	- g / - oz	328	296	324	310	10.53	9.52	10.41	9.98
Target	- m <sup>2</sup> / - ft <sup>2</sup>	5.05	5.10	5.15	5.07	54.32	54.90	55.46	54.61
Actual	- m <sup>2</sup> / - ft <sup>2</sup>	6.02	5.01	4.85	5.47	64.79	53.96	52.20	58.88
<b>FINANCIAL RESULTS (MILLION)</b>									
Gold income		355	323	357	677	55	54	54	109
Cost of sales		280	283	286	564	44	48	44	91
Cash operating costs		184	211	219	396	29	35	33	64
Other cash costs		2	2	3	4	-	1	1	1
Total cash costs		186	213	222	400	29	36	34	65
Retrenchment costs		5	1	-	7	1	-	-	1
Rehabilitation and other non-cash costs		4	5	2	8	1	1	-	1
Production costs		196	219	224	415	31	37	34	67
Amortisation of tangible assets		89	69	54	159	14	12	8	25
Inventory change		(5)	(5)	8	(9)	(1)	(1)	2	(2)
		75	40	71	113	11	6	10	18
Realised non-hedge derivatives		(16)	21	16	5	(2)	3	3	1
Gross profit excluding the effect of unrealised non-hedge derivatives		59	61	87	118	9	9	13	19
		122	95	101	217	19	16	15	35
Capital expenditure									

Rounding of figures may result in computational discrepancies.

## Argentina

	Quarter ended June 2005	Quarter ended March 2005	Quarter ended June 2004	Six months ended June 2005	Quarter ended June 2005	Quarter ended March 2005	Quarter ended June 2004	Six months ended June 2005		
<b>CERRO VANGUARDIA - Attributable 92.50%</b>	<b>Rand / Metric</b>				<b>Dollar / Imperial</b>					
<b>OPERATING RESULTS</b>										
<b>OPEN-PIT OPERATION</b>										
Mined	- 000 tonnes /	- 000 tons	4,690	4,509	4,386	9,199	5,170	4,970	4,834	10,140
Treated	- 000 tonnes /	- 000 tons	201	218	227	419	222	241	250	462
Stripping ratio	- t (mined total - mined ore) / t mined ore		18.94	15.81	19.05	17.27	18.94	15.81	19.05	17.27
Yield	- g / t	/ - oz / t	7.91	8.15	6.39	8.04	0.231	0.238	0.186	0.234
Gold in ore	- kg	/ - oz (000)	1,647	1,843	1,524	3,490	53	59	49	112
Gold produced	- kg	/ - oz (000)	1,591	1,779	1,449	3,370	51	57	47	108
Gold sold	- kg	/ - oz (000)	1,540	1,743	1,438	3,283	50	56	46	106
Price received	- R / kg	/ - \$ / oz - sold	78,459	74,334	76,430	76,269	381	385	361	383
Total cash costs	- R / kg	/ - \$ / oz - produced	35,203	27,280	39,673	31,021	171	141	187	155
Total production costs	- R / kg	/ - \$ / oz - produced	57,305	45,919	68,938	51,295	277	238	325	256
<b>PRODUCTIVITY PER EMPLOYEE</b>										
Target	- g	/ - oz	816	782	962	798	26.23	25.13	30.94	25.66
Actual	- g	/ - oz	911	815	814	858	29.28	26.20	26.18	27.57
<b>FINANCIAL RESULTS (MILLION)</b>										
Gold income			131	140	120	271	21	23	19	44
Cost of sales			87	80	105	167	14	13	16	27
Cash operating costs			44	37	48	81	7	6	7	13
Other cash costs			12	12	10	24	2	2	1	4
Total cash costs			56	49	58	105	9	8	8	17
Rehabilitation and other non-cash costs			1	-	1	1	-	-	-	-
Production costs			57	49	59	106	9	8	8	17
Amortisation of tangible assets			34	32	42	67	5	5	7	11
Inventory change			(4)	(1)	4	(5)	(1)	-	1	(1)
			45	60	15	104	7	10	3	17
Realised non-hedge derivatives			(3)	(2)	(1)	(5)	-	-	-	(1)
Gross profit excluding the effect of unrealised non-hedge derivatives			42	58	14	99	7	10	3	16
Capital expenditure			34	21	25	55	5	3	4	9

Rounding of figures may result in computational discrepancies.

## Australia

	Quarter ended June 2005	Quarter ended March 2005	Quarter ended June 2004	Six months ended June 2005	Quarter ended June 2005	Quarter ended March 2005	Quarter ended June 2004	Six months ended June 2005
<b>SUNRISE DAM</b>	<b>Rand / Metric</b>				<b>Dollar / Imperial</b>			
<b>OPERATING RESULTS</b>								
<b>OPEN-PIT OPERATION</b>								
Volume mined - 000 bcm / - 000 bcy	2,785	2,605	4,171	5,390	3,642	3,407	5,454	7,050
Treated - 000 tonnes / - 000 tons	912	866	866	1,778	1,005	954	955	1,960
Stripping ratio - t (mined total - mined ore) / t mined ore	5.12	4.34	8.94	4.72	5.12	4.34	8.94	4.72
Yield - g / t / - oz / t	4.28	4.60	3.47	4.43	0.125	0.134	0.101	0.129
Gold produced - kg / - oz (000)	4,063	4,064	3,008	8,127	131	131	97	261
Gold sold - kg / - oz (000)	4,067	4,053	3,010	8,120	131	130	97	261
Price received - R / kg / - \$ / oz - sold	99,502	81,997	88,462	90,765	483	424	422	454
Total cash costs - R / kg / - \$ / oz - produced	50,451	53,857	53,942	52,154	246	279	255	262
Total production costs - R / kg / - \$ / oz - produced	66,620	68,751	67,013	67,686	324	356	317	340
<b>PRODUCTIVITY PER EMPLOYEE</b>								
Target - g / - oz	3,027	3,150	2,552	3,087	97.32	101.27	82.03	99.25
Actual - g / - oz	3,558	3,812	2,827	3,681	114.38	122.57	90.88	118.33
<b>FINANCIAL RESULTS (MILLION)</b>								
Gold income	413	337	273	750	64	56	41	120
Cost of sales	273	252	148	526	43	42	22	85
Cash operating costs	195	211	156	406	31	35	24	66
Other cash costs	10	8	6	17	2	1	1	3
Total cash costs	205	219	162	424	32	36	25	69
Rehabilitation and other non-cash costs	8	5	2	13	1	1	-	2
Production costs	213	224	164	437	33	37	25	71
Amortisation of tangible assets	58	55	37	113	9	9	5	18
Inventory change	3	(27)	(53)	(24)	-	(4)	(8)	(4)
	140	85	125	225	22	14	19	36
Realised non-hedge derivatives	(8)	(5)	(6)	(13)	(1)	(1)	(1)	(2)
Gross profit excluding the effect of unrealised non-hedge derivatives	131	80	119	211	21	13	18	34
Capital expenditure	54	41	43	95	8	7	6	15

Rounding of figures may result in computational discrepancies.



## Brazil

	Quarter ended	Quarter ended	Quarter ended	Six months ended	Quarter ended	Quarter ended	Quarter ended	Six months ended
	June 2005	March 2005	June 2004	June 2005	June 2005	March 2005	June 2004	June 2005
<b>SERRA GRANDE - Attributable 50%</b>	<b>Rand / Metric</b>				<b>Dollar / Imperial</b>			
<b>OPERATING RESULTS</b>								
<b>UNDERGROUND OPERATION</b>								
Mined	- 000 tonnes /	- 000 tons						
	94	92	92	186	103	102	101	205
Treated	- 000 tonnes /	- 000 tons						
	93	94	92	187	103	104	102	207
Yield	- g / t	/	- oz / t					
	8.04	8.01	7.87	8.02	0.234	0.233	0.230	0.234
Gold produced	- kg	/	- oz (000)					
	751	752	729	1,504	24	24	23	48
Gold sold	- kg	/	- oz (000)					
	774	751	689	1,526	25	24	22	49
Price received	- R / kg	/	- \$ / oz	- sold				
	85,794	80,467	83,035	83,171	415	416	391	416
Total cash costs	- R / kg	/	- \$ / oz	- produced				
	31,615	28,483	26,504	30,048	153	147	125	150
Total production costs	- R / kg	/	- \$ / oz	- produced				
	40,004	36,143	35,340	38,072	194	187	167	190
<b>PRODUCTIVITY PER EMPLOYEE</b>								
Target	- g	/	- oz					
	830	833	839	832	26.69	26.79	26.96	26.74
Actual	- g	/	- oz					
	992	1,007	861	999	31.91	32.36	27.67	32.13
<b>FINANCIAL RESULTS (MILLION)</b>								
Gold income	60	55	51	116	9	9	8	19
Cost of sales	31	27	24	58	5	4	4	9
Cash operating costs	23	21	19	44	4	3	3	7
Other cash costs	1	-	-	1	-	-	-	-
Total cash costs	24	21	19	45	4	3	3	7
Rehabilitation and other non-cash costs	-	-	-	-	-	-	-	-
Production costs	24	21	19	45	4	3	3	7
Amortisation of tangible assets	6	6	6	12	1	1	1	2
Inventory change	1	-	(1)	1	-	-	-	-
Realised non-hedge derivatives	30	28	27	58	5	5	4	9
Gross profit excluding the effect of unrealised non-hedge derivatives	6	5	6	11	1	1	1	2
Capital expenditure	36	33	33	69	6	6	5	11
	10	9	9	19	2	1	1	3

Roundings of figures may result in computational discrepancies.

## Ghana

	Quarter	Quarter	Quarter	Six months	Quarter	Quarter	Quarter	Six months			
	ended	ended	ended	ended	ended	ended	ended	ended			
	June	March	June	June	June	March	June	June			
	2005	2005	2004	2005	2005	2005	2004	2005			
<b>BIBIANI</b>	<b>Rand / Metric</b>				<b>Dollar / Imperial</b>						
<b>OPERATING RESULTS</b>											
<b>UNDERGROUND OPERATION</b>											
Mined	- 000 tonnes	/	- 000 tons	3	3	2	6	3	3	2	6
Treated	- 000 tonnes	/	- 000 tons	3	2	2	5	3	3	2	6
Yield	- g / t	/	- oz / t	5.20	4.36	3.28	4.83	0.152	0.127	0.096	0.141
Gold produced	- kg	/	- oz (000)	16	10	5	26	1	-	-	1
<b>OPEN-PIT OPERATION</b>											
Mined	- 000 tonnes	/	- 000 tons	1,561	1,284	729	2,846	1,721	1,416	804	3,137
Treated	- 000 tonnes	/	- 000 tons	604	637	440	1,241	666	702	485	1,368
Stripping ratio	- t (mined total - mined ore)	/	t mined ore	6.48	5.83	2.83	6.17	6.48	5.83	2.83	6.17
Yield	- g / t	/	- oz / t	1.51	1.58	1.78	1.55	0.044	0.046	0.052	0.045
Gold in ore	- kg	/	- oz (000)	626	1,015	522	1,642	20	33	17	53
Gold produced	- kg	/	- oz (000)	915	1,009	783	1,924	29	32	25	62
<b>TOTAL</b>											
Yield	- g / t	/	- oz / t	1.53	1.59	1.79	1.56	0.045	0.047	0.052	0.046
Gold produced	- kg	/	- oz (000)	931	1,020	788	1,951	30	33	25	63
Gold sold	- kg	/	- oz (000)	931	1,020	788	1,951	30	33	25	63
Price received	- R / kg	/	- \$ / oz	87,800	83,352	82,555	85,474	426	432	391	429
Total cash costs	- R / kg	/	- \$ / oz	60,929	55,841	50,177	58,269	296	289	237	292
Total production costs	- R / kg	/	- \$ / oz	91,334	83,860	75,617	87,453	443	434	358	439
<b>PRODUCTIVITY PER EMPLOYEE</b>											
Target	- g	/	- oz	407	397	1,244	402	13.10	12.75	17.74	12.93
Actual	- g	/	- oz	465	487	1,024	476	14.94	15.65	32.92	15.30
<b>FINANCIAL RESULTS (MILLION)</b>											
Gold income				79	82	66	161	12	14	10	26
Cost of sales				87	87	66	174	14	15	10	27
Cash operating costs				53	53	36	106	8	9	6	17
Other cash costs				4	4	3	8	1	1	-	1
Total cash costs				57	57	40	114	9	10	6	18
Rehabilitation and other non-cash costs				2	2	1	4	-	-	-	-
Production costs				59	59	40	118	9	10	6	18
Amortisation of tangible assets				26	27	20	53	4	5	3	9
Inventory change				2	1	6	3	-	-	1	1
				(7)	(5)	-	(13)	(1)	(1)	-	(2)
Realised non-hedge derivatives				3	3	(1)	6	-	1	-	1
Gross loss excluding the effect of unrealised non-hedge derivatives				(5)	(2)	-	(7)	(1)	-	-	(1)
Capital expenditure				17	12	13	29	3	2	2	5

Rounding of figures may result in computational discrepancies.

## Ghana

	Quarter	Quarter	Quarter	Six months	Quarter	Quarter	Quarter	Six months
	ended	ended	ended	ended	ended	ended	ended	ended
	June	March	June	June	June	March	June	June
	2005	2005	2004	2005	2005	2005	2004	2005
<b>IDUAPRIEM - Attributable 85%</b>	<b>Rand / Metric</b>				<b>Dollar / Imperial</b>			
<b>OPERATING RESULTS</b>								
<b>OPEN-PIT OPERATION</b>								
Mined	- 000 tonnes /	- 000 tons						
	6,377	6,004	3,315	12,381	7,030	6,618	3,655	13,648
Treated	- 000 tonnes /	- 000 tons						
	722	800	542	1,522	796	882	597	1,677
Stripping ratio	- t (mined total - mined ore) / t mined ore							
	6.37	6.76	4.80	6.55	6.37	6.76	4.80	6.55
Yield	- g / t /	- oz / t						
	1.72	1.80	1.48	1.76	0.050	0.052	0.043	0.051
Gold in ore	- kg /	- oz (000)						
	1,671	1,622	1,019	3,292	54	52	33	106
Gold produced	- kg /	- oz (000)						
	1,241	1,437	802	2,677	40	46	26	86
<b>HEAP LEACH OPERATION</b>								
Mined	- 000 tonnes /	- 000 tons						
	-	-	23	-	-	-	26	-
Placed <sup>1</sup>	- 000 tonnes /	- 000 tons						
	-	-	9	-	-	-	10	-
Gold produced	- kg /	- oz (000)						
	3	6	36	9	-	-	1	-
<b>TOTAL</b>								
Yield <sup>4</sup>	- g / t /	- oz / t						
	1.72	1.80	1.48	1.76	0.050	0.052	0.043	0.051
Gold produced	- kg /	- oz (000)						
	1,244	1,442	838	2,686	40	46	27	86
Gold sold	- kg /	- oz (000)						
	1,263	1,279	845	2,542	41	41	27	82
Price received	- R / kg /	- \$ / oz - sold						
	86,211	86,157	84,757	86,184	422	446	400	434
Total cash costs	- R / kg /	- \$ / oz - produced						
	69,809	55,716	65,545	62,242	339	288	309	312
Total production costs	- R / kg /	- \$ / oz - produced						
	89,551	75,043	84,258	81,761	435	389	397	410
<b>PRODUCTIVITY PER EMPLOYEE</b>								
Target	- g /	- oz						
	729	699	807	714	23.43	22.48	25.96	22.96
Actual	- g /	- oz						
	584	681	609	633	18.78	21.91	19.59	20.34
<b>FINANCIAL RESULTS (MILLION)</b>								
Gold income								
	98	96	75	195	15	16	11	32
Cost of sales								
	98	95	70	193	15	16	10	31
Cash operating costs								
	81	75	51	156	13	12	8	25
Other cash costs								
	6	5	4	12	1	1	1	2
Total cash costs								
	87	80	55	167	14	13	8	27
Rehabilitation and other non-cash costs								
	1	2	1	3	-	-	-	-
Production costs								
	88	82	56	170	14	14	8	27
Amortisation of tangible assets								
	21	23	15	44	3	4	2	7
Inventory change								
	(11)	(10)	(1)	(21)	(2)	(2)	-	(3)
Realised non-hedge derivatives								
	1	1	5	2	-	-	1	-
Gross profit excluding the effect of unrealised non-hedge derivatives								
	11	14	(3)	24	2	2	(1)	4
Capital expenditure								
	5	2	3	7	1	-	1	1

<sup>1</sup> Tonnes / Tons placed on to leach pad.

<sup>2</sup> Gold placed / tonnes (tons) placed.

<sup>3</sup> Gold placed into leach pad inventory.

<sup>4</sup> Total yield excludes the heap leach operation.

Rounding of figures may result in computational discrepancies.

## Ghana

	Quarter ended June 2005	Quarter ended March 2005	Quarter ended June 2004	Six months ended June 2005	Quarter ended June 2005	Quarter ended March 2005	Quarter ended June 2004	Six months ended June 2005	
	Rand / Metric				Dollar / Imperial				
<b>OBUASI</b>									
<b>OPERATING RESULTS</b>									
<b>UNDERGROUND OPERATION</b>									
Mined	- 000 tonnes / - 000 tons	556	495	330	556	613	545	363	613
Treated	- 000 tonnes / - 000 tons	544	492	344	1,065	599	542	379	1,173
Yield	- g / t / - oz / t	4.95	4.80	5.39	4.79	0.144	0.130	0.157	0.140
Gold produced	- kg / - oz (000)	2,692	2,404	1,852	5,096	87	78	60	164
<b>SURFACE AND DUMP RECLAMATION</b>									
Treated	- 000 tonnes / - 000 tons	478	526	247	1,005	527	580	272	1,107
Yield	- g / t / - oz / t	0.50	0.49	0.68	0.49	0.015	0.014	0.020	0.014
Gold produced	- kg / - oz (000)	241	256	168	496	8	8	5	16
<b>OPEN-PIT OPERATION</b>									
Mined	- 000 tonnes / - 000 tons	1,007	828	583	1,872	1,110	913	643	2,063
Treated	- 000 tonnes / - 000 tons	46	61	99	46	51	67	109	51
Stripping ratio	- t (mined total - mined ore) / t mined ore	13.22	10.50	6.93	13.19	13.22	10.50	6.93	13.19
Yield	- g / t / - oz / t	5.06	3.10	1.76	9.18	0.147	0.090	0.051	0.268
Gold in ore	- kg / - oz (000)	224	311	354	224	7	10	11	7
Gold produced	- kg / - oz (000)	234	191	175	425	8	6	6	14
<b>TOTAL</b>									
Yield	- g / t / - oz / t	2.96	2.60	3.18	2.84	0.086	0.079	0.093	0.083
Gold produced	- kg / - oz (000)	3,166	2,851	2,194	6,017	102	92	71	193
Gold sold	- kg / - oz (000)	3,196	2,821	2,167	6,018	103	91	70	193
Price received	- R / kg / - \$ / oz - sold	87,913	86,597	84,892	87,296	424	448	400	435
Total cash costs	- R / kg / - \$ / oz - produced	66,915	69,979	61,905	68,367	324	362	292	342
Total production costs	- R / kg / - \$ / oz - produced	93,257	92,649	86,944	92,736	451	480	410	464
<b>PRODUCTIVITY PER EMPLOYEE</b>									
Target	- g / - oz	358	332	238	345	11.51	10.68	7.65	11.10
Actual	- g / - oz	213	186	210	199	6.84	5.99	6.75	6.41
<b>FINANCIAL RESULTS (MILLION)</b>									
Gold income		257	213	192	470	40	35	29	75
Cost of sales		310	251	186	561	48	41	28	90
Cash operating costs		199	189	127	387	31	31	19	62
Other cash costs		13	11	9	24	2	2	1	4
Total cash costs		212	200	136	411	33	33	21	66
Retrenchment costs		-	-	-	-	-	-	-	-
Rehabilitation and other non-cash costs		-	-	-	-	-	-	-	-
Production costs		212	200	136	411	33	33	21	66
Amortisation of tangible assets		83	63	55	147	13	10	8	24
Inventory change		14	(12)	(5)	3	2	(2)	(1)	-
		(53)	(38)	6	(91)	(8)	(6)	1	(15)
Realised non-hedge derivatives		24	31	(8)	56	4	5	(1)	9
Gross loss excluding the effect of unrealised non-hedge derivatives		(29)	(7)	(2)	(35)	(5)	(1)	-	(6)
Capital expenditure		105	77	48	182	17	13	7	29

Rounding of figures may result in computational discrepancies.

## Guinea

	Quarter	Quarter	Quarter	Six months	Quarter	Quarter	Quarter	Six months			
	ended	ended	ended	ended	ended	ended	ended	ended			
	June	March	June	June	June	March	June	June			
	2005	2005	2004	2005	2005	2005	2004	2005			
<b>SIGUIRI - Attributable 85%</b>	<b>Rand / Metric</b>				<b>Dollar / Imperial</b>						
<b>OPEN-PIT OPERATION</b>											
Mined	- 000 tonnes	/	- 000 tons	4,085	-	-	4,085	4,503	-	-	4,503
Treated	- 000 tonnes	/	- 000 tons	1,373	-	-	1,373	1,513	-	-	1,513
Stripping ratio	- t (mined total	- mined ore) / t mined ore		0.89	-	-	0.89	0.89	-	-	0.89
Yield	- g / t	/	- oz / t	1.35	-	-	1.35	0.039	-	-	0.039
Gold produced	- kg	/	- oz (000)	1,848	-	-	1,848	59	-	-	59
<b>HEAP LEACH OPERATION</b>											
Mined	- 000 tonnes	/	- 000 tons	-	3,678	1,029	3,678	-	4,054	1,135	4,054
Placed <sup>1</sup>	- 000 tonnes	/	- 000 tons	79	1,497	593	1,575	87	1,650	653	1,736
Stripping ratio	- t (mined total	- mined ore) / t mined ore		-	1.68	0.46	1.68	-	1.68	0.46	1.68
Yield <sup>2</sup>	- g / t	/	- oz / t	1.24	1.16	1.12	1.16	0.036	0.034	0.033	0.034
Gold placed <sup>3</sup>	- kg	/	- oz (000)	97	1,738	663	1,835	3	56	21	59
Gold produced	- kg	/	- oz (000)	639	1,345	535	1,983	21	43	17	64
<b>TOTAL</b>											
Yield <sup>4</sup>	- g / t	/	- oz / t	1.35	-	-	1.35	0.039	-	-	0.039
Gold produced	- kg	/	- oz (000)	2,486	1,345	535	3,831	80	43	17	123
Gold sold	- kg	/	- oz (000)	2,326	1,345	-	3,670	75	43	-	118
Price received	- R / kg	/	- \$ / oz	88,283	86,569	-	87,655	426	448	-	434
Total cash costs	- R / kg	/	- \$ / oz	43,673	76,360	82,013	55,145	212	395	386	276
Total production costs	- R / kg	/	- \$ / oz	62,908	92,084	109,599	73,148	305	477	519	365
<b>PRODUCTIVITY PER EMPLOYEE</b>											
Target	- g	/	- oz	1,241	1,049	566	1,145	39.90	33.74	18.21	36.82
Actual	- g	/	- oz	774	489	273	643	24.87	15.73	8.78	20.66
<b>FINANCIAL RESULTS (MILLION)</b>											
Gold income				192	99	-	292	30	17	-	46
Cost of sales				145	103	9	248	23	18	1	40
Cash operating costs				102	99	42	200	16	16	7	32
Other cash costs				7	4	2	11	1	1	-	2
Total cash costs				109	103	44	211	17	17	7	34
Rehabilitation and other non-cash costs				7	4	3	12	1	1	-	2
Production costs				116	107	47	223	18	18	7	36
Amortisation of tangible assets				38	16	11	54	6	3	2	9
Inventory change				(9)	(20)	(49)	(30)	(1)	(3)	(8)	(5)
				48	(4)	(9)	44	7	(1)	(1)	7
Realised non-hedge derivatives				13	17	(4)	30	2	3	(1)	5
Gross profit (loss) excluding the effect of unrealised non-hedge derivatives				61	13	(13)	74	9	2	(2)	11
Capital expenditure				57	80	94	137	9	13	14	22

<sup>1</sup> Tonnes / Tons placed on to leach pad.

<sup>2</sup> Gold placed / tonnes (tons) placed.

<sup>3</sup> Gold placed into leach pad inventory.

<sup>4</sup> Total yield excludes the heap leach operation.

Rounding of figures may result in computational discrepancies.

## Mali

	Quarter ended June 2005	Quarter ended March 2005	Quarter ended June 2004	Six months ended June 2005	Quarter ended June 2005	Quarter ended March 2005	Quarter ended June 2004	Six months ended June 2005
<b>MORILA - Attributable 40%</b>	<b>Rand / Metric</b>				<b>Dollar / Imperial</b>			
<b>OPERATING RESULTS</b>								
<b>OPEN-PIT OPERATION</b>								
Volume mined - 000 bcm / - 000 bcy	1,020	1,303	786	2,323	1,334	1,704	1,028	3,039
Mined - 000 tonnes / - 000 tons	2,786	3,126	2,175	5,912	3,071	3,446	2,397	6,516
Treated - 000 tonnes / - 000 tons	380	343	346	723	419	378	382	797
Stripping ratio - t (mined total - mined ore) / t mined ore	2.48	3.75	4.11	3.05	2.48	3.75	4.11	3.05
Yield - g / t / - oz / t	5.51	6.05	3.06	5.77	0.161	0.177	0.089	0.168
Gold produced - kg / - oz (000)	2,095	2,075	1,058	4,171	67	67	34	134
Gold sold - kg / - oz (000)	2,025	2,040	1,089	4,066	65	66	35	131
Price received - R / kg / - \$ / oz - sold	89,194	82,141	74,061	85,655	429	425	353	427
Total cash costs - R / kg / - \$ / oz - produced	35,711	33,432	50,383	34,577	173	173	238	173
Total production costs - R / kg / - \$ / oz - produced	52,583	49,458	72,640	51,028	255	256	344	255
<b>PRODUCTIVITY PER EMPLOYEE</b>								
Target - g / - oz	2,295	2,170	2,302	2,232	73.79	69.75	74.02	71.77
Actual - g / - oz	3,742	3,766	1,353	3,754	120.31	121.09	43.51	120.70
<b>FINANCIAL RESULTS (MILLION)</b>								
Gold income	181	168	79	348	28	28	12	56
Cost of sales	107	95	78	202	17	16	12	32
Cash operating costs	62	58	48	120	10	10	7	19
Other cash costs	13	12	6	24	2	2	1	4
Total cash costs	75	69	54	144	12	12	8	23
Rehabilitation and other non-cash costs	1	1	1	1	-	-	-	-
Production costs	76	70	55	146	12	12	8	23
Amortisation of tangible assets	35	33	22	67	5	5	3	11
Inventory change	(3)	(8)	1	(11)	(1)	(1)	1	(2)
	73	73	1	146	11	12	-	24
Realised non-hedge derivatives	-	-	2	-	-	-	1	-
Gross profit excluding the effect of unrealised non-hedge derivatives	73	73	3	146	11	12	1	24
Capital expenditure	-	4	1	3	-	1	1	1

Rounding of figures may result in computational discrepancies.

## Mali

	Quarter ended June 2005	Quarter ended March 2005	Quarter ended June 2004	Six months ended June 2005	Quarter ended June 2005	Quarter ended March 2005	Quarter ended June 2004	Six months ended June 2005	
	Rand / Metric				Dollar / Imperial				
<b>SADIOLA - Attributable 38%</b>									
<b>OPERATING RESULTS</b>									
<b>OPEN-PIT OPERATION</b>									
Volume mined	- 000 bcm / - 000 bcy	1,172	841	751	2,013	1,533	1,100	981	2,633
Mined	- 000 tonnes / - 000 tons	2,169	1,749	1,386	3,918	2,391	1,928	1,528	4,319
Treated	- 000 tonnes / - 000 tons	444	449	493	893	489	495	543	984
Stripping ratio	- t (mined total - mined ore) / t mined ore	4.88	2.25	1.17	3.32	4.88	2.25	1.17	3.32
Yield	- g / t / - oz / t	3.02	2.65	2.82	2.83	0.088	0.077	0.082	0.083
Gold produced	- kg / - oz (000)	1,339	1,188	1,386	2,527	43	38	44	81
Gold sold	- kg / - oz (000)	1,299	1,202	1,375	2,501	42	39	44	80
Price received	- R / kg / - \$ / oz - sold	89,147	84,983	82,614	87,146	427	440	392	433
Total cash costs	- R / kg / - \$ / oz - produced	53,050	54,634	49,087	53,795	256	283	232	269
Total production costs	- R / kg / - \$ / oz - produced	67,266	73,458	61,607	70,177	325	380	291	351
<b>PRODUCTIVITY PER EMPLOYEE</b>									
Target	- g / - oz	1,835	1,399	1,676	1,617	59.01	44.97	53.89	51.99
Actual	- g / - oz	1,757	1,702	1,967	1,731	56.49	54.72	63.24	55.65
<b>FINANCIAL RESULTS (MILLION)</b>									
Gold income		116	102	115	218	18	17	18	35
Cost of sales		89	87	86	177	14	15	14	28
Cash operating costs		63	58	60	121	10	10	10	19
Other cash costs		8	7	8	15	1	1	1	2
Total cash costs		71	65	68	136	11	11	11	22
Rehabilitation and other non-cash costs		1	1	1	2	-	-	1	-
Production costs		72	66	69	138	11	11	12	22
Amortisation of tangible assets		18	21	16	40	3	4	2	6
Inventory change		(1)	-	1	-	-	-	-	-
		26	15	29	41	4	2	4	6
Realised non-hedge derivatives		-	-	(1)	-	-	-	-	-
Gross profit excluding the effect of unrealised non-hedge derivatives		26	15	28	41	4	2	4	6
Capital expenditure		13	14	12	27	2	2	2	4

Rounding of figures may result in computational discrepancies.

## Mali

		Quarter ended	Quarter ended	Quarter ended	Six months ended	Quarter ended	Quarter ended	Quarter ended	Six months ended
		June 2005	March 2005	June 2004	June 2005	June 2005	March 2005	June 2004	June 2005
<b>YATELA - Attributable 40%</b>		<b>Rand / Metric</b>				<b>Dollar / Imperial</b>			
<b>OPERATING RESULTS</b>									
<b>HEAP LEACH OPERATION</b>									
Mined	- 000 tonnes / - 000 tons	1,699	1,679	1,985	3,378	1,873	1,850	2,187	3,723
Placed <sup>1</sup>	- 000 tonnes / - 000 tons	319	323	303	643	352	356	334	708
Stripping ratio	- t (mined total - mined ore) / t mined ore	9.68	5.75	4.91	7.28	9.68	5.75	4.91	7.28
Yield <sup>2</sup>	- g / t / - oz / t	2.51	2.61	3.61	2.56	0.073	0.076	0.105	0.075
Gold placed <sup>3</sup>	- kg / - oz (000)	802	844	1,094	1,646	26	27	35	53
Gold produced	- kg / - oz (000)	705	717	769	1,421	23	23	25	46
Gold sold	- kg / - oz (000)	683	772	880	1,455	22	25	28	47
Price received	- R / kg / - \$ / oz - sold	89,539	82,700	83,553	85,910	428	428	395	428
Total cash costs	- R / kg / - \$ / oz - produced	61,786	54,180	50,423	57,951	299	280	238	290
Total production costs	- R / kg / - \$ / oz - produced	82,056	73,966	62,370	77,977	398	383	295	390
<b>PRODUCTIVITY PER EMPLOYEE</b>									
Target	- g / - oz	1,180	994	1,044	1,087	37.92	31.97	33.58	34.95
Actual	- g / - oz	1,050	967	914	1,006	33.76	31.09	29.38	32.36
<b>FINANCIAL RESULTS (MILLION)</b>									
Gold income		61	64	73	125	9	11	12	20
Cost of sales		57	55	56	111	9	9	9	18
Cash operating costs		39	34	34	73	6	6	5	12
Other cash costs		4	5	5	9	1	1	-	1
Total cash costs		44	39	39	82	7	7	5	13
Rehabilitation and other non-cash costs		1	-	1	1	-	-	1	-
Production costs		44	39	40	83	7	7	6	13
Amortisation of tangible assets		13	14	8	28	2	2	1	4
Inventory change		(1)	2	8	-	-	-	2	-
		5	9	17	14	1	2	3	2
Realised non-hedge derivatives		-	-	-	-	-	-	-	-
Gross profit excluding the effect of unrealised non-hedge derivatives		5	9	17	14	1	2	3	2
		5	6	5	11	1	1	1	2
Capital expenditure									

<sup>1</sup> Tonnes / Tons placed on to leach pad.

<sup>2</sup> Gold placed / tonnes (tons) placed.

<sup>3</sup> Gold placed into leach pad inventory.

Rounding of figures may result in computational discrepancies.

## Namibia

	Quarter ended June 2005	Quarter ended March 2005	Quarter ended June 2004	Six months ended June 2005	Quarter ended June 2005	Quarter ended March 2005	Quarter ended June 2004	Six months ended June 2005
	Rand / Metric				Dollar / Imperial			
<b>NAVACHAB</b>								
<b>OPERATING RESULTS</b>								
<b>OPEN-PIT OPERATION</b>								
Volume mined	- 000 bcm / - 000 bcy							
	312	258	15	570	408	337	19	745
Mined	- 000 tonnes / - 000 tons							
	1,018	839	39	1,857	1,122	925	43	2,047
Treated	- 000 tonnes / - 000 tons							
	283	308	345	591	312	339	381	651
Stripping ratio	- t (mined total - mined ore) / t mined ore							
	1.91	1.65	0.33	1.79	1.91	1.65	0.33	1.79
Yield	- g / t / - oz / t							
	1.98	1.94	1.46	1.96	0.058	0.056	0.042	0.057
Gold produced	- kg / - oz (000)							
	560	596	503	1,156	18	19	16	37
Gold sold	- kg / - oz (000)							
	558	636	538	1,193	18	20	17	38
Price received	- R / kg / - \$ / oz - sold							
	88,761	83,370	83,549	85,889	427	431	396	430
Total cash costs	- R / kg / - \$ / oz - produced							
	74,345	79,780	67,876	77,146	362	413	320	388
Total production costs	- R / kg / - \$ / oz - produced							
	94,010	88,903	76,372	91,378	459	460	360	460
<b>PRODUCTIVITY PER EMPLOYEE</b>								
Target	- g / - oz							
	704	672	405	688	22.64	21.60	13.02	22.12
Actual	- g / - oz							
	596	606	783	601	19.16	19.49	25.19	19.33
<b>FINANCIAL RESULTS (MILLION)</b>								
Gold income								
	49	53	44	102	8	9	7	16
Cost of sales								
	55	52	39	107	9	9	6	17
Cash operating costs								
	41	47	34	89	6	8	6	14
Other cash costs								
	-	1	-	1	-	-	-	-
Total cash costs								
	42	48	34	89	7	8	6	14
Rehabilitation and other non-cash costs								
	6	-	-	6	1	-	(1)	1
Production costs								
	47	48	34	95	7	8	5	15
Amortisation of tangible assets								
	5	5	4	11	1	1	1	2
Inventory change								
	3	(1)	1	2	-	-	-	-
Realised non-hedge derivatives								
	(6)	1	5	(5)	(1)	-	1	(1)
Gross (loss) profit excluding the effect of unrealised non-hedge derivatives								
	(6)	1	5	(5)	(1)	-	1	(1)
Capital expenditure								
	14	5	101	18	2	1	15	3

Rounding of figures may result in computational discrepancies.

## Tanzania

	Quarter ended June 2005	Quarter ended March 2005	Quarter ended June 2004	Six months ended June 2005	Quarter ended June 2005	Quarter ended March 2005	Quarter ended June 2004	Six months ended June 2005	
	Rand / Metric				Dollar / Imperial				
<b>GEITA - Attributable 100% May 2004</b>									
<b>OPERATING RESULTS</b>									
<b>OPEN-PIT OPERATION</b>									
Volume mined	- 000 bcm / - 000 bcy	5,487	4,884	4,367	10,371	7,178	6,388	5,677	13,566
Mined	- 000 tonnes / - 000 tons	14,602	12,607	11,236	27,209	16,096	13,897	12,386	29,992
Treated	- 000 tonnes / - 000 tons	1,536	1,436	1,253	2,972	1,693	1,583	1,382	3,276
Stripping ratio	- t (mined total - mined ore) / t mined ore	8.20	9.31	6.60	8.68	8.20	9.31	6.60	8.68
Yield	- g / t / - oz / t	3.34	4.15	3.46	3.73	0.097	0.121	0.101	0.109
Gold produced	- kg / - oz (000)	5,133	5,963	4,339	11,097	165	192	140	357
Gold sold	- kg / - oz (000)	5,273	5,691	3,949	10,964	170	183	127	353
Price received	- R / kg / - \$ / oz - sold	72,840	71,909	76,043	72,357	351	372	357	362
Total cash costs	- R / kg / - \$ / oz - produced	68,422	41,204	48,015	53,795	331	213	226	268
Total production costs	- R / kg / - \$ / oz - produced	84,160	56,421	64,139	69,253	408	292	302	345
<b>PRODUCTIVITY PER EMPLOYEE</b>									
Target	- g / - oz	1,042	1,221	1,187	1,131	33.49	39.25	38.18	36.37
Actual	- g / - oz	1,282	1,545	1,159	1,411	41.21	49.68	37.26	45.37
<b>FINANCIAL RESULTS (MILLION)</b>									
Gold income		381	407	299	788	59	68	45	127
Cost of sales		440	345	256	786	68	58	38	126
Cash operating costs		330	228	193	559	51	38	29	89
Other cash costs		21	16	16	38	3	3	2	6
Total cash costs		351	244	209	597	55	41	31	96
Rehabilitation and other non-cash costs		3	3	2	5	-	-	1	1
Production costs		354	247	211	602	55	41	32	96
Amortisation of tangible assets		78	88	68	166	12	15	10	27
Inventory change		8	10	(23)	18	1	2	(4)	3
		(59)	62	43	2	(9)	10	7	1
Realised non-hedge derivatives		3	3	2	6	-	-	1	1
Gross (loss) profit excluding the effect of unrealised non-hedge derivatives		(56)	65	45	7	(9)	10	8	2
Capital expenditure		63	17	19	80	10	3	3	13

Rounding of figures may result in computational discrepancies.

## USA

	Quarter ended June 2005	Quarter ended March 2005	Quarter ended June 2004	Six months ended June 2005	Quarter ended June 2005	Quarter ended March 2005	Quarter ended June 2004	Six months ended June 2005	
<b>CRIPPLE CREEK &amp; VICTOR J.V.</b>	<b>Rand / Metric</b>				<b>Dollar / Imperial</b>				
<b>OPERATING RESULTS</b>									
<b>HEAP LEACH OPERATION</b>									
Mined	- 000 tonnes / - 000 tons	11,583	11,892	13,885	23,475	12,769	13,109	15,305	25,877
Placed <sup>1</sup>	- 000 tonnes / - 000 tons	4,773	4,756	4,722	9,530	5,262	5,243	5,205	10,505
Stripping ratio	- t (mined total - mined ore) / t mined ore	1.81	1.40	2.14	1.59	1.81	1.40	2.14	1.59
Yield <sup>2</sup>	- g / t / - oz / t	0.62	0.64	0.59	0.63	0.018	0.019	0.017	0.018
Gold placed <sup>3</sup>	- kg / - oz (000)	2,959	3,036	2,795	5,995	95	98	90	193
Gold produced	- kg / - oz (000)	2,215	2,508	2,373	4,723	71	81	76	152
Gold sold	- kg / - oz (000)	2,227	2,492	2,375	4,719	72	80	76	152
Price received	- R / kg / - \$ / oz - sold	74,928	78,505	68,941	76,817	359	406	327	384
Total cash costs <sup>4</sup>	- R / kg / - \$ / oz - produced	47,084	42,443	44,081	44,620	227	220	208	223
Total production costs	- R / kg / - \$ / oz - produced	68,225	61,610	57,610	64,712	329	319	272	324
<b>PRODUCTIVITY PER EMPLOYEE</b>									
Target	- g / - oz	2,723	2,695	2,857	2,709	87.56	86.66	91.85	87.11
Actual	- g / - oz	2,322	2,714	2,513	2,515	74.65	87.26	80.80	80.86
<b>FINANCIAL RESULTS (MILLION)</b>									
Gold income		155	155	167	310	24	26	25	50
Cost of sales		151	155	137	306	23	26	21	49
Cash operating costs		141	126	127	267	22	21	19	43
Other cash costs		7	7	4	14	1	1	1	2
Total cash costs		147	133	131	280	23	22	20	45
Rehabilitation and other non-cash costs		2	4	(7)	7	-	1	(1)	1
Production costs		150	137	124	287	23	23	19	46
Amortisation of tangible assets		63	57	60	120	10	9	9	19
Inventory change		(62)	(39)	(47)	(101)	(10)	(6)	(7)	(16)
Realised non-hedge derivatives		3	-	30	4	-	-	4	1
Gross profit excluding the effect of unrealised non-hedge derivatives		12	41	(3)	53	2	7	-	9
Capital expenditure		14	9	18	23	2	2	3	4

<sup>1</sup> Tonnes / Tons placed onto leach pad.

<sup>2</sup> Gold placed / tonnes (tons) placed.

<sup>3</sup> Gold placed into leach pad inventory.

<sup>4</sup> Total cash cost calculation includes inventory change.

Rounding of figures may result in computational discrepancies.





## Administrative information

### ANGLOGOLD ASHANTI LIMITED

Registration No. 1944/017354/06  
Incorporated in the Republic of South Africa

### Share codes:

ISIN: ZAE000043485

JSE:	ANG
LSE:	AGD
NYSE:	AU
ASX:	AGG
GSE (Shares):	AGA
GSE (GhDS):	AADA
Euronext Paris:	VA
Euronext Brussels:	ANG

**JSE Sponsor:** UBS

**Auditors:** Ernst & Young

### Contacts

#### South Africa

##### Charles Carter

Telephone: +27 11 637 6385  
Fax: +27 11 637 6400  
E-mail: [cecarter@AngloGoldAshanti.com](mailto:cecarter@AngloGoldAshanti.com)

##### Michael Clements

Telephone: +27 11 637 6647  
Fax: +27 11 637 6400  
E-mail: [mclements@AngloGoldAshanti.com](mailto:mclements@AngloGoldAshanti.com)

##### Clement Mamathuba

Telephone: +27 11 637 6223  
Fax: +27 11 637 6400  
E-mail: [cmamathuba@AngloGoldAshanti.com](mailto:cmamathuba@AngloGoldAshanti.com)

#### United States of America

##### Andrea Maxey

Telephone: (800) 417 9255 (toll free in USA and Canada) or +1 212 750 7999  
Fax: +1 212 750 5626  
E-mail: [amaxey@AngloGoldAshanti.com](mailto:amaxey@AngloGoldAshanti.com)

#### General E-mail enquiries

[investors@AngloGoldAshanti.com](mailto:investors@AngloGoldAshanti.com)

#### AngloGold Ashanti website

<http://www.AngloGoldAshanti.com>

PRINTED BY INCE (PTY) LIMITED

### Directors

#### Executive

R M Godsell (Chief Executive Officer)  
J G Best  
R Carvalho Silva  
Dr S E Jonah KBE †  
N F Nicolau  
K H Williams

#### Non-Executive

R P Edey \* (Chairman)  
Dr T J Motlatsi (Deputy Chairman)  
F B Arisman #  
Mrs E le R Bradley  
C B Brayshaw  
A W Lea (Alternate: P G Whitcutt)  
W A Nairn (Alternate: A H Calver \*)  
S R Thompson \*  
A J Trahar  
P L Zim (Alternate: D D Barber)

\* British      # American      † Ghanaian

### Offices

#### Registered and Corporate

Managing Secretary: Ms Y Z Simelane  
Company Secretary: C R Bull

11 Diagonal Street  
Johannesburg 2001  
(PO Box 62117, Marshalltown 2107)  
South Africa  
Telephone: +27 11 637 6000  
Fax: +27 11 637 6624

#### Australia

Level 13, St Martins Tower  
44 St George's Terrace  
Perth, WA 6000  
(PO Box Z5046, Perth WA 6831)  
Australia  
Telephone: +61 8 9425 4604  
Fax: +61 8 9425 4662

#### Ghana

Gold House  
Patrice Lumumba Road  
(P O Box 2665)  
Accra  
Ghana  
Telephone: +233 21 772190  
Fax: +233 21 778155

#### United Kingdom Secretaries

St James's Corporate Services Limited  
6 St James's Place  
London SW1A 1NP  
England  
Telephone: +44 20 7499 3916  
Fax: +44 20 7491 1989

### Share Registrars

#### South Africa

Computershare Investor Services 2004 (Pty) Limited  
Ground Floor, 70 Marshall Street  
Johannesburg 2001  
(PO Box 61051, Marshalltown 2107)  
South Africa  
Telephone: 0861 100 724 (in SA)  
Fax: +27 11 688 5222  
[web.queries@computershare.co.za](mailto:web.queries@computershare.co.za)

#### United Kingdom

Computershare Investor Services PLC  
P O Box 82  
The Pavilions  
Bridgewater Road  
Bristol BS99 7NH  
England  
Telephone: +44 870 702 0000  
Fax: +44 870 703 6119

#### Australia

Computershare Investor Services Pty Limited  
Level 2, 45 St George's Terrace  
Perth, WA 6000  
(GPO Box D182 Perth, WA 6840)  
Australia  
Telephone: +61 8 9323 2000  
Telephone: 1300 55 7010 (in Australia)  
Fax: +61 8 9323 2033

#### Ghana

NTHC Limited  
Martco House  
Off Kwame Nkrumah Avenue  
POBox K1A 9563 Airport  
Accra  
Ghana  
Telephone: +233 21 238492-3  
Fax: +233 21 229975

#### ADR Depository

The Bank of New York ("BoNY")  
Investor Services, P O Box 11258  
Church Street Station  
New York, NY 10286-1258  
United States of America  
Telephone: +1 888 269 2377 (Toll free in USA) or +9 610 382 7836 outside USA)  
E-mail: [shareowners@bankofny.com](mailto:shareowners@bankofny.com)  
Website: <http://www.stockbny.com>

#### Global BuyDIRECT<sup>SM</sup>

BoNY maintains a direct share purchase and dividend reinvestment plan for ANGLOGOLD ASHANTI.  
Telephone: +1-888-BNY-ADRS

Certain statements contained in this document, including, without limitation, those concerning the economic outlook for the gold mining industry, expectations regarding gold prices and production, the completion and commencement of commercial operations of certain of AngloGold Ashanti's exploration and production projects, and its liquidity and capital resources and expenditure, contain certain forward-looking statements regarding AngloGold Ashanti's operations, economic performance and financial condition. Although AngloGold Ashanti believes that the expectations reflected in such forward-looking statements are reasonable, no assurance can be given that such expectations will prove to have been correct. Accordingly, results could differ materially from those set out in the forward-looking statements as a result of, among other factors, changes in economic and market conditions, success of business and operating initiatives, changes in the regulatory environment and other government actions, fluctuations in gold prices and exchange rates, and business and operational risk management. AngloGold Ashanti undertakes no obligation to update publicly or release any revisions to these forward-looking statements to reflect events or circumstances after the date of the annual report on Form 20-F or to reflect the occurrence of unanticipated events. All subsequent written or oral forward-looking statements attributable to AngloGold Ashanti or any person acting on its behalf are qualified by the cautionary statements herein. For a discussion on such risk factors, refer to AngloGold Ashanti's annual report on Form 20-F for the year ended 31 December 2004, which was filed with the Securities and Exchange Commission (SEC) on 14 July 2005.